



Master Plan Concepts

100% Planning

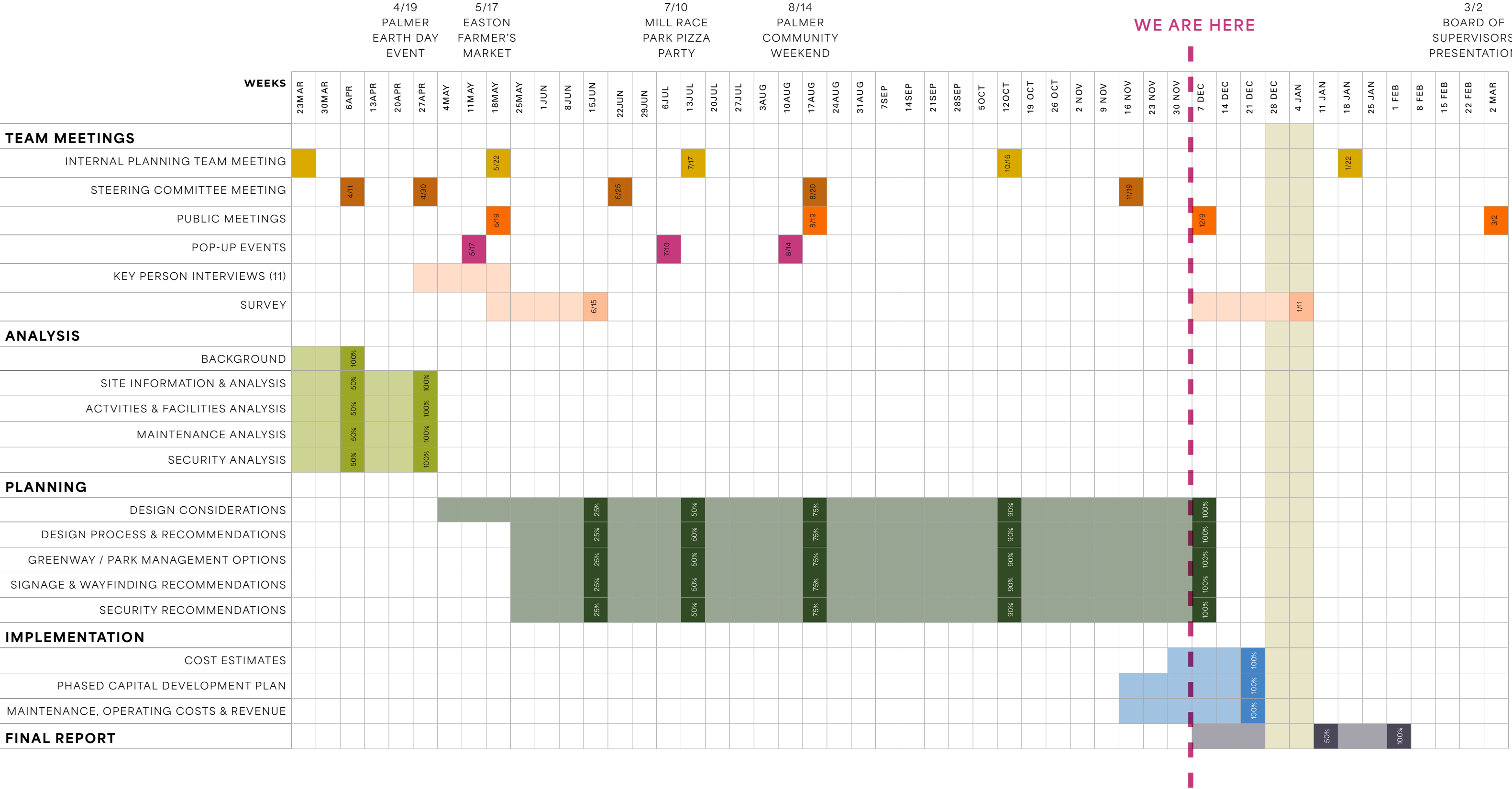
December 9, 2025



Project Goals



Planning Schedule



Regional Context

Trail networks

REGIONAL TRAIL NETWORKS:

1

9/11 National Memorial Trail (1,500 miles)

2

D&L Trail (140 miles)

3

Delaware River Water Trail (200 miles)

4

Forks Township Recreation Trail (2 miles)

5

Karl Stirner Arts Trail (2.2 miles)

6

Lehigh River Water Trail (75 miles)

7

Palmer Township Trail Network (1.4 miles)

8

Plainfield Township Recreation Trail (6.7 miles)

9

South Bethlehem Greenway (2.4 miles)

10

Stockertown Rail Trail (1 mile)

11

Tatamy Trail (0.25 miles)

12

Two Rivers Trailway (20 miles)

The LINK Trail Network (125 miles)

EXISTING TRAILS INCLUDED IN THIS STUDY:

T1

Palmer Bikeway (3.0 miles)

T2

Schoeneck Creek Trail A.K.A. Penn's Grant Path (0.7 miles)

ADJACENT PARK TRAILS:

A1

Jacobsburg Environmental Education Center Trails (19.7 miles)

A2

Louise W. Moore County Park Trails (2.7 miles)

A3

Marlton Wildlife Sanctuary Trails (4.2 miles)

REGIONAL TRAIL NETWORK GAPS:

G1

Between Tatamy Trail & Stockertown Rail Trail

G2

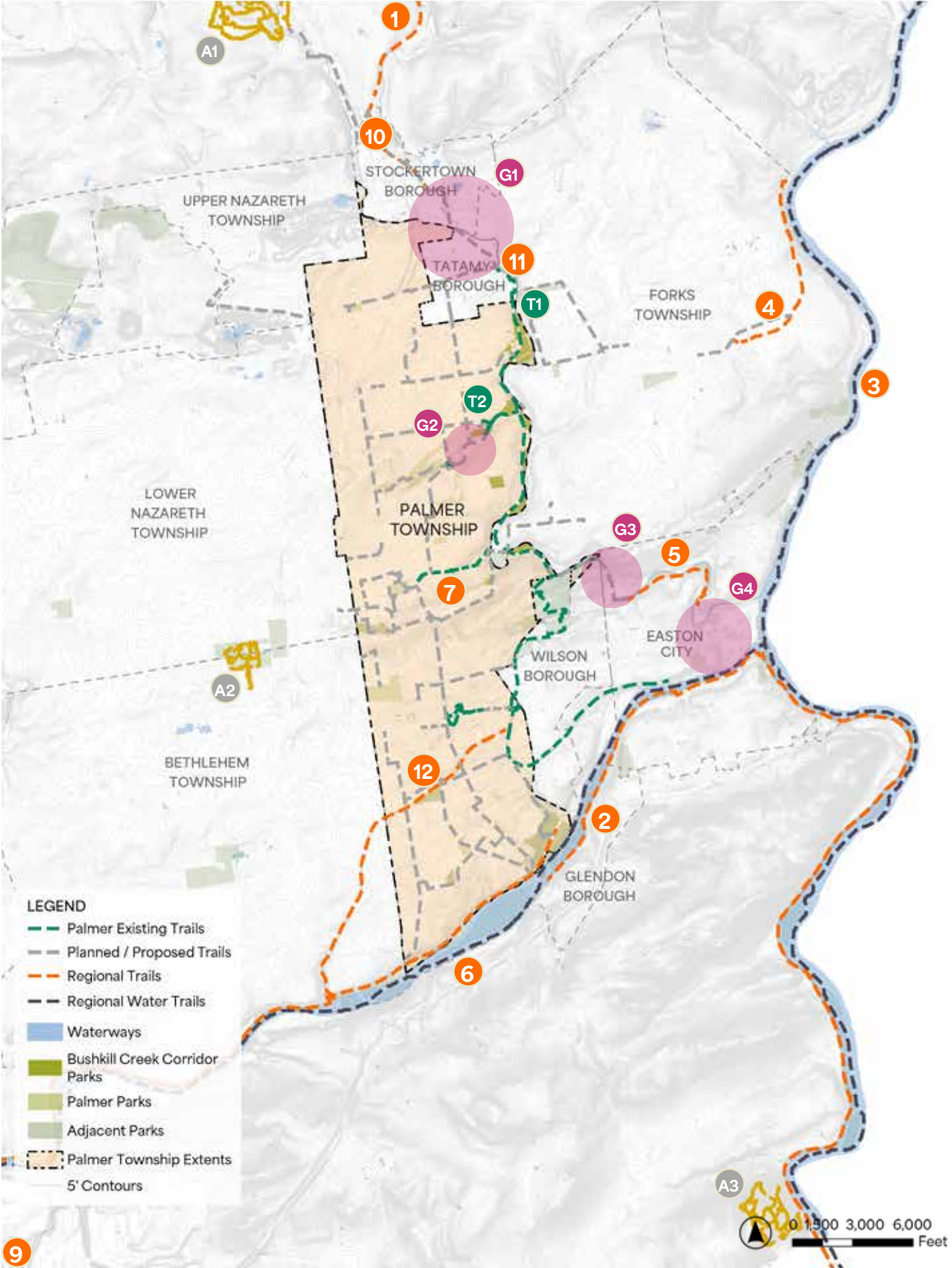
Between Schoeneck Creek Trail & Trail at Fox Run Open Space

G3

Between Palmer Bikeway & KSAT at 13th Street

G4

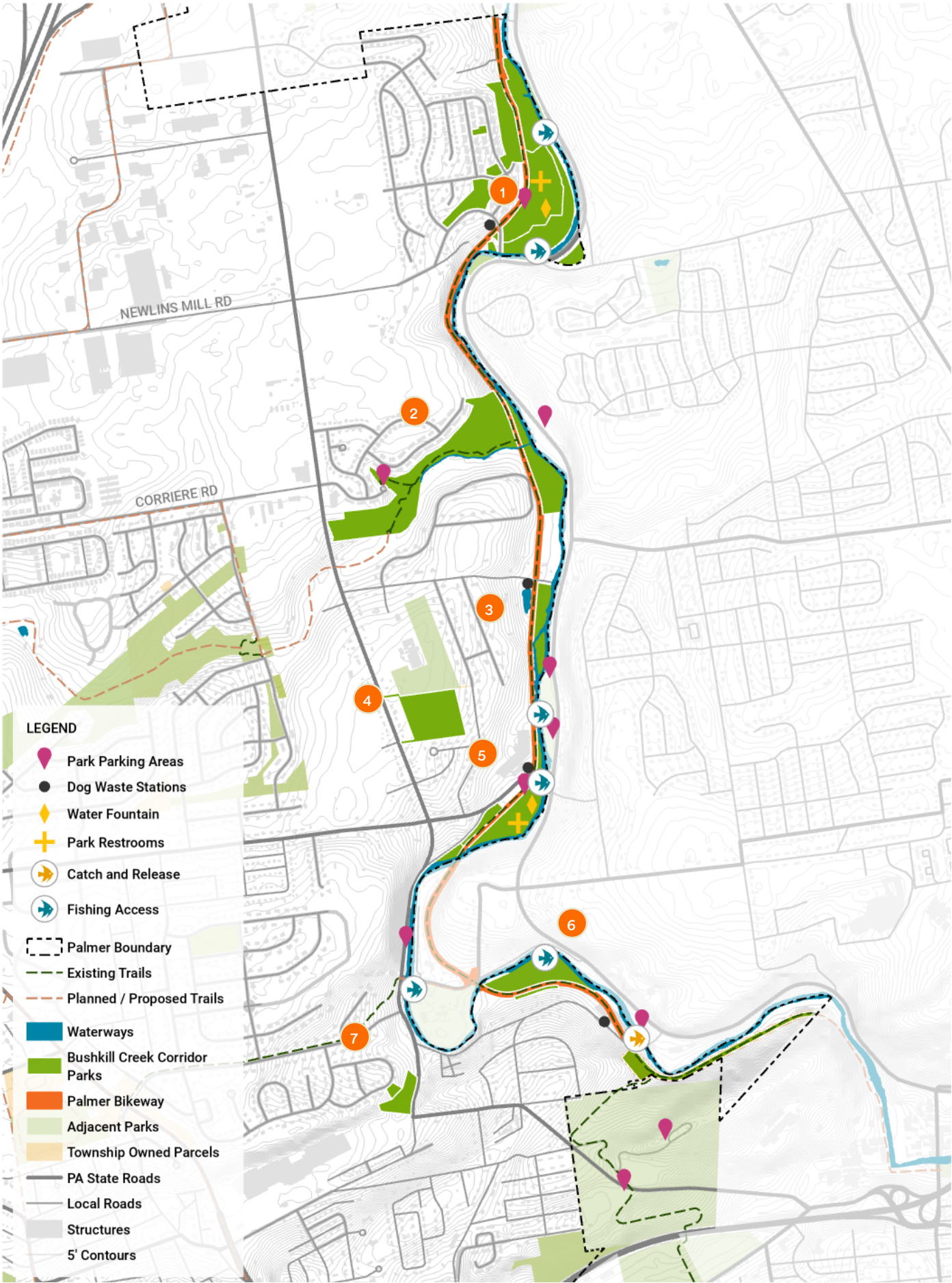
Between KSAT & D&L Trail through the City of Easton



Bushkill Creek Greenway

What parcels are included?

- 1 Mill Race Park & Morningside Tot Lot
- 2 Penn's Grant Open Space
- 3 Two Fool's Island (Potential Future Acquisition)
- 4 Keystone Park
- 5 Penn Pump Park & Potential Future Open Space at Northwood Ave
- 6 Binney & Smith Preserve (Binney & Smith Open Space)
- 7 Hillcrest Open Space & Tot Lot



Community Engagement

Public Participation
Engaged with 700-800 people

- In-Person Walks & Pop-Ups
- Public Meetings
- Other Feedback



5/16/25 Steering Committee Site Walk



5/17/25 Easton Farmer’s Market Pop-Up
21 write-in responses



5/19/25 Public Meeting #1



May to July: 11 Key Person Interviews



7/10/25 Pizza at Mill Race Park Pop-Up
107 dot votes / 33 write-in responses



452 responses to Survey 1



8/14/25 Palmer Community Days Pop-Up
94 write-in responses



8/19/25 Public Meeting #2



12/9/25 Public Meeting #3

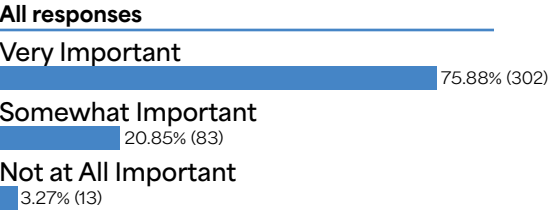


3/2/26 Board of Supervisors Meeting

Climate Change & Conservation

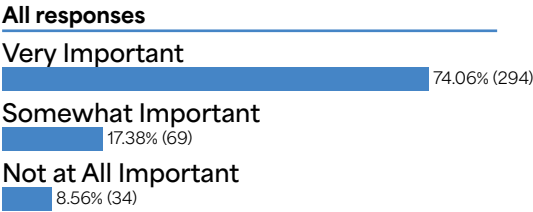
Q10: How important is it to you for Palmer Township to invest in **ecological restoration and conservation** of natural lands?

398 total responses (54 skipped)



Q11: How important is it to you for Palmer Township to plan for **potential impacts of climate change** (such as flooding, habitat loss, extreme heat, etc)?

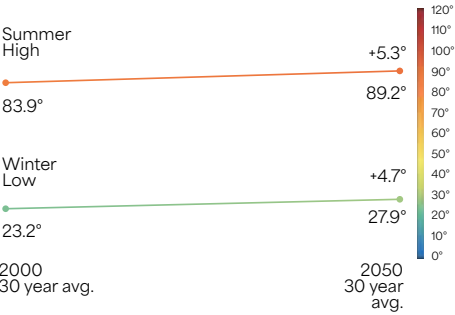
397 total responses (55 skipped)



Supercharge **ecological restoration** to enhance habitat, water quality flood mitigation, while at the same time supercharging **spaces for people** along the Creek for recreation.

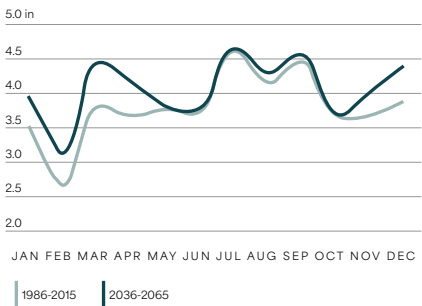


*AVERAGE TEMPERATURE



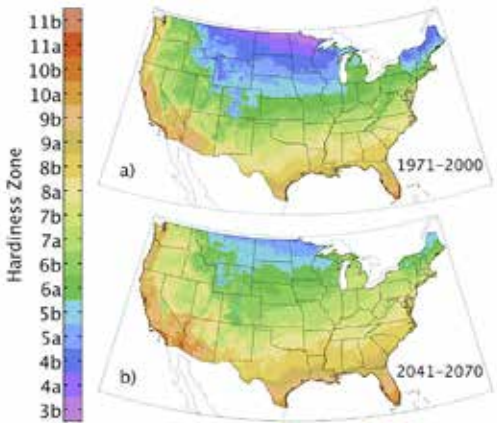
In PA, over the past 110 years the temperature has increased by 1.8° F***

*YEAR LONG PRECIPITATION

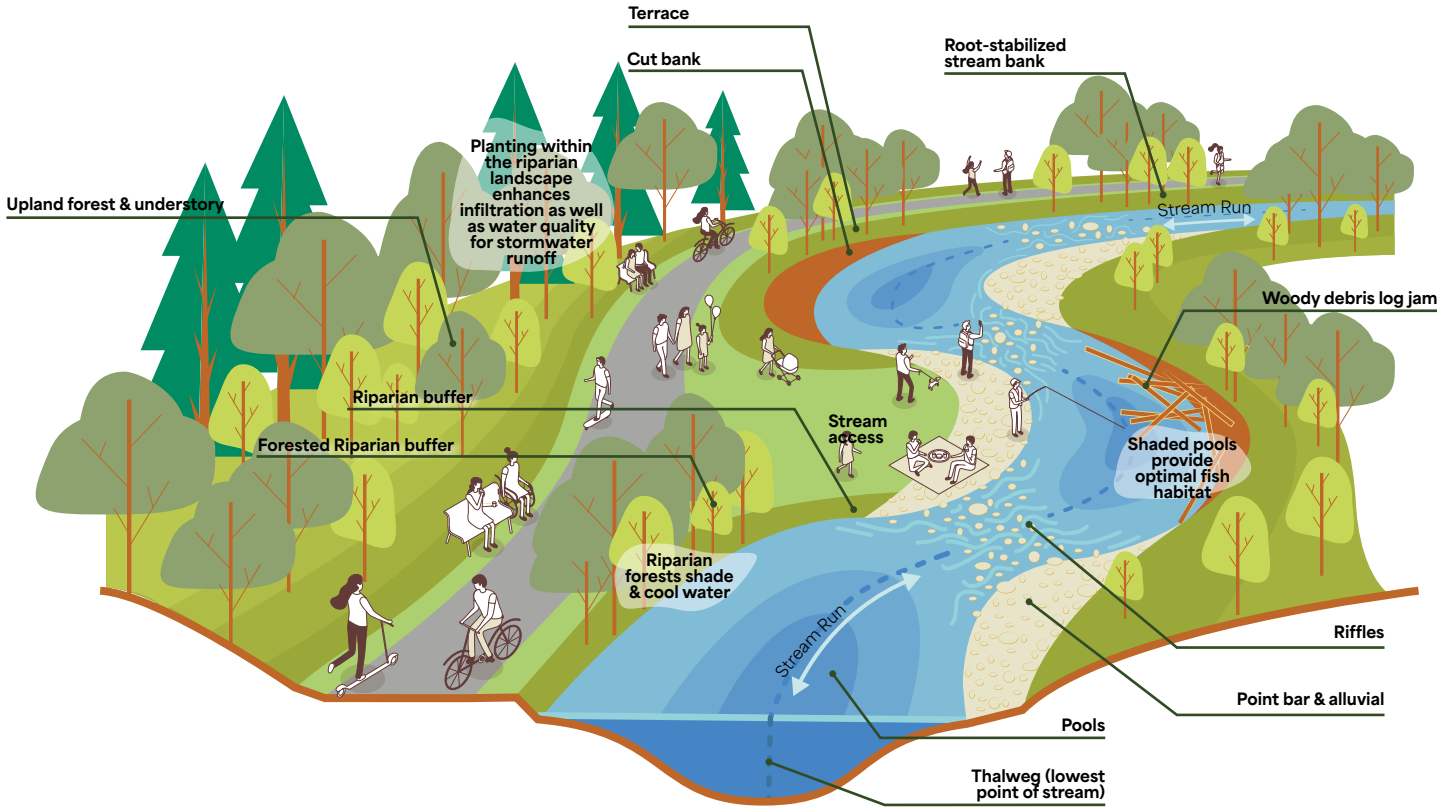


In PA, over the past 110 years there has been a 10% increase in the amount of precipitation on average**
By 2050, we can expect an additional 8% increase in precipitation***

COLD HARDINESS ZONE SHIFT**



Plant hardiness zones shifting north at a rate of around 13 miles per decade based on the average of 20 different predictive climate models.
Northampton County is currently in zone 6A and 6B - Predicted to shift into zones 7A and 7B by 2070



**<https://iopscience.iop.org/article/10.1088/1748-9326/11/3/034001/pdf>
***<https://www.vox.com/a/weather-climate-change-us-cities-global-warming>
***<https://www.dep.pa.gov/Citizens/climate/Pages/default.aspx#:~:text=In%20Pennsylvania%2C%20our%20climate%20has,amount%20of%20precipitation%2C%20on%20average>

Bushkill Creek Greenway

Trail Amenities

Survey No. 1, Select responses related to trails

Q7: To enhance amenities & safety, which elements should be improved or added to the Bushkill Creek Greenway?

Choose up to 3.

396 total responses (56 skipped)



Public restrooms / **57.07% (226)**



Water fountains & bottle-filling stations / **52.78% (209)**



Signage / **42.17% (167)**



Seating / **26.01% (103)**



Dog-friendly spaces / **25.25% (100)**



Better safety & security measures / **21.97% (87)**



Bike repair stands and pumps / **18.94% (75)**



Shade / **18.94% (75)**



Public art / **14.9% (59)**

Evolution of the Bushkill

Historic Mills & Dams



Walter's Mill & Dam
Sources: Sigal Museum, NCHGS Marx Room at the Easton Public Library



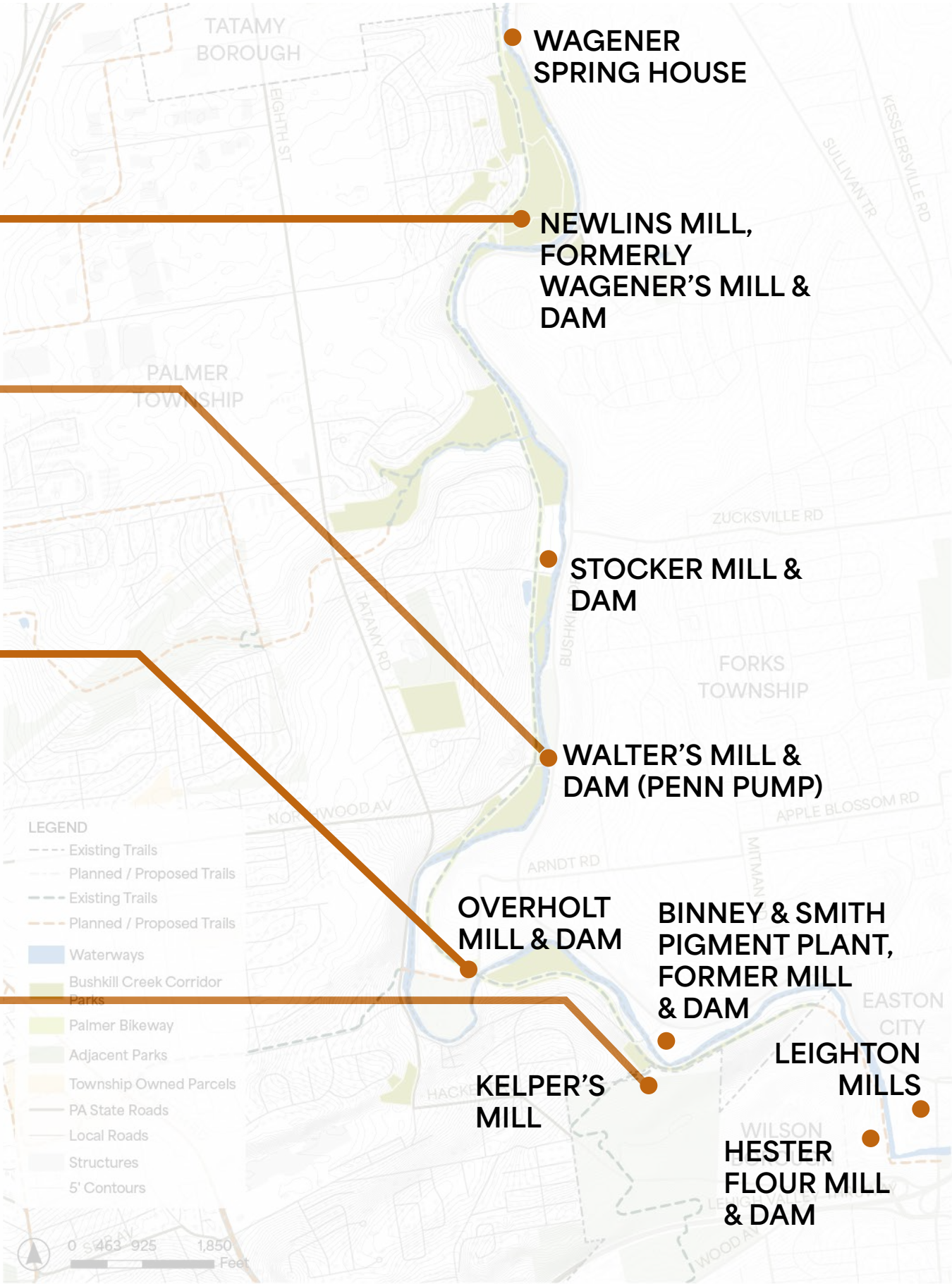
Wagener Homestead & Dam
Source: Marx Room at the Easton Public Library



Overholt Mill, 1944
Source: NCHGS



Kelper's Mill
Source: Sigal Museum, NCHGS



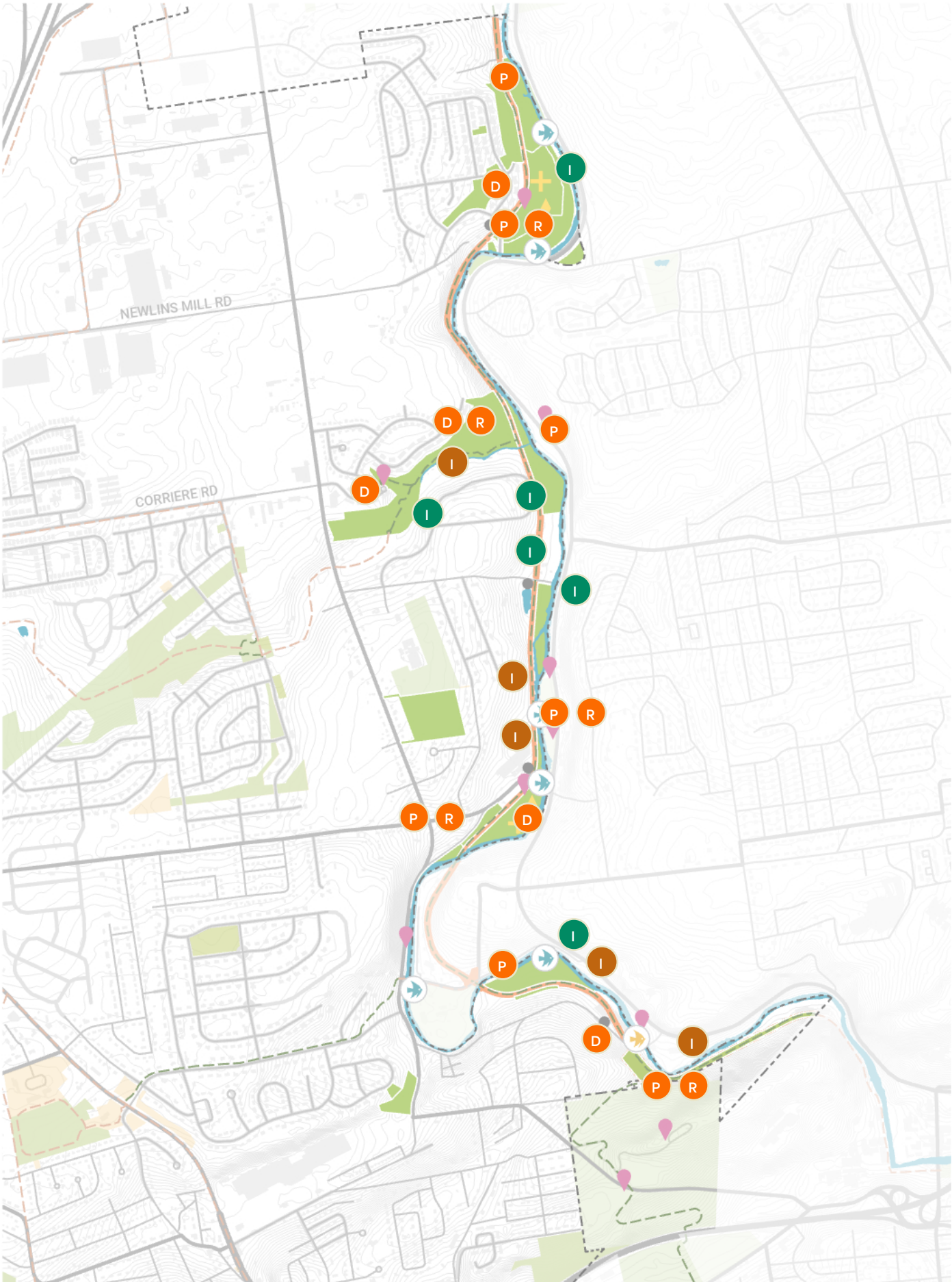
Bushkill Creek Greenway

Signage & Wayfinding



- I** Interpretive Signage Locations: Ecology
- Mill Race Park - riparian buffer
 - Penn's Grant Park - scrub/shrub at power lines
 - Trout Unlimited Sign Updates
 - Blue Easel
 - Two Fool's Island - wetland setting
 - Wildland's Conservancy Binney & Smith Preserve

- I** Interpretive Signage Locations: History
- Penn's Grant Park - Mill foundation wall at clearing
 - Stocker Mill & Dam (Dam 7, Blue Easel)
 - Proposed Fishing Pier (Dam 6)
 - Wildland's Conservancy Binney & Smith Preserve
 - GJ Mills trail

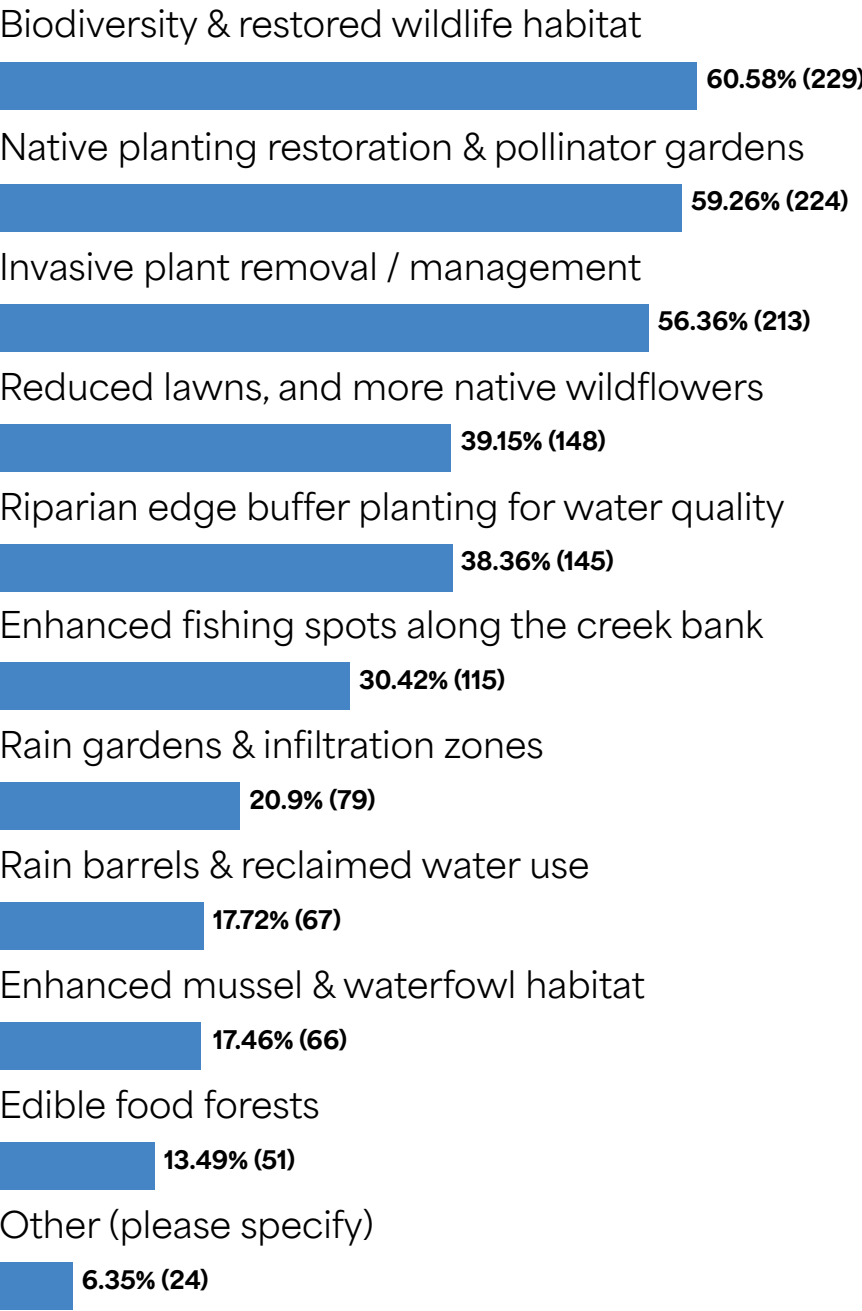


Ecology + Activity

Q9: To **enhance ecology**, what should be added or improved in the Bushkill Creek Greenway? Choose up to 3.

378 total responses (74 skipped)

All responses

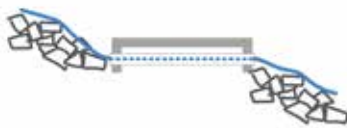


Restoration & Conservation Strategies

HYDROLOGY



Dam Removal



Culvert Repair / Management



Upland rain gardens for water cleansing & infiltration

POLICY



Incentivize conversion to regenerative agriculture



Reduce impervious development and/or adapt with green roofs, upland meadows, rain gardens & microforests

ECOLOGY



Remove invasive plants & replace with aggressive natives



Replant riparian buffers with native plants



Allow deadfall for logjams to create habitat for fish & invertebrates, and lessen sedimentation



Reconnect Floodplain Habitats



Crib logs to prevent erosional runoff



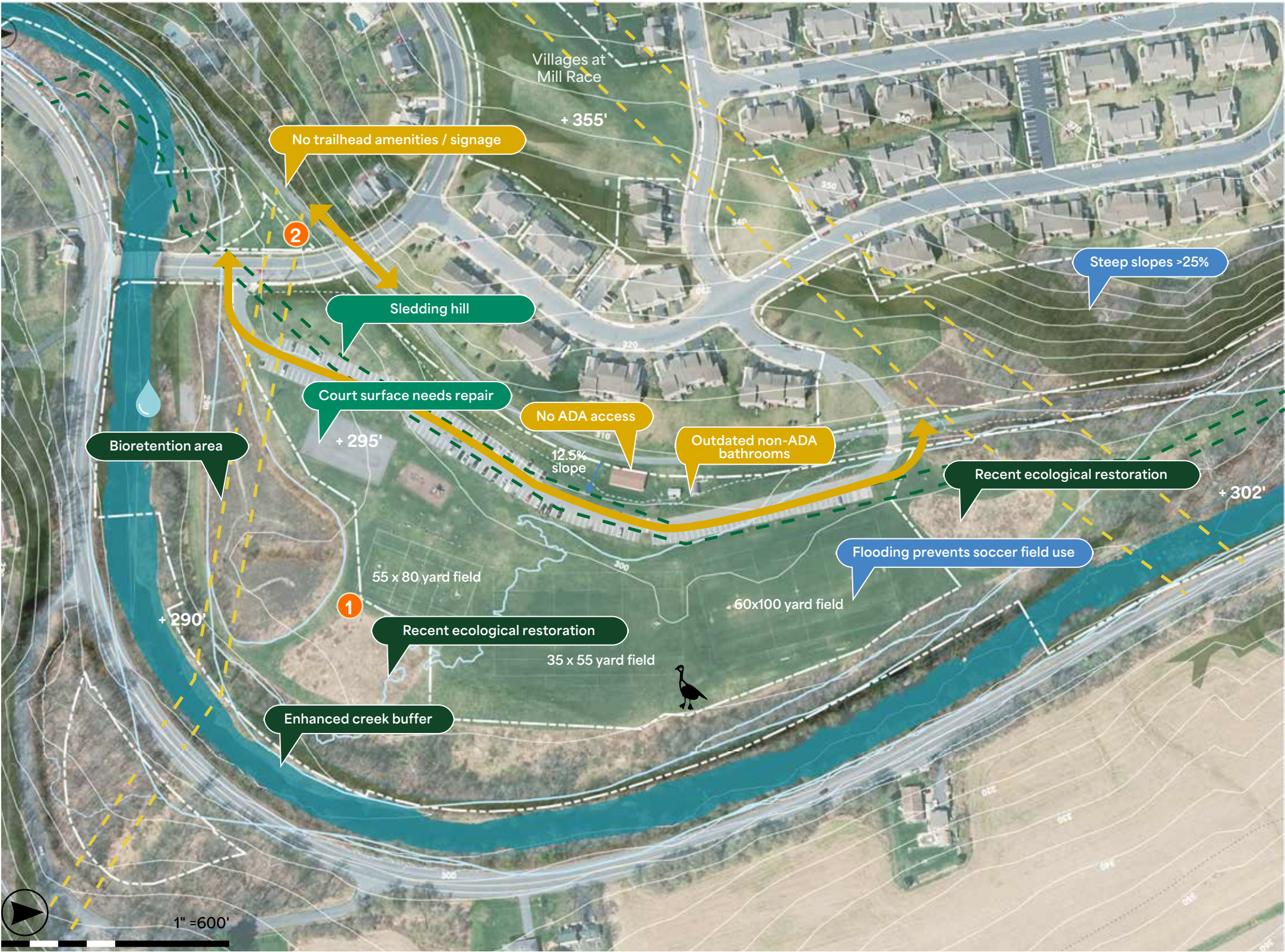
Live staking for root stabilization on slopes



Install fencing & interpretive signage at restoration areas

Mill Race Park & Tot Lot

Analysis



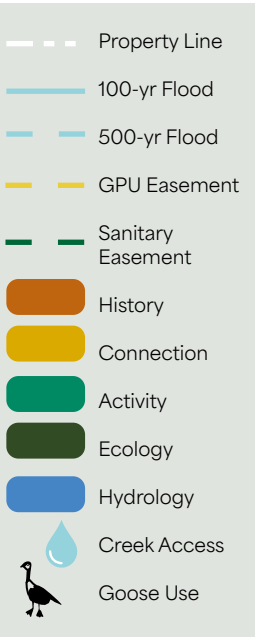
1 Soccer field after a heavy rain, 2019
Image courtesy of Dave Dumpel



2 Soccer Field after flooding at elevation ~296, 2020
Image courtesy of Dave Dumpel

Goals

- Enhance habitat
- Perform floodplain restoration and enhancement
- Locate new facilities out of the 100-year floodplain

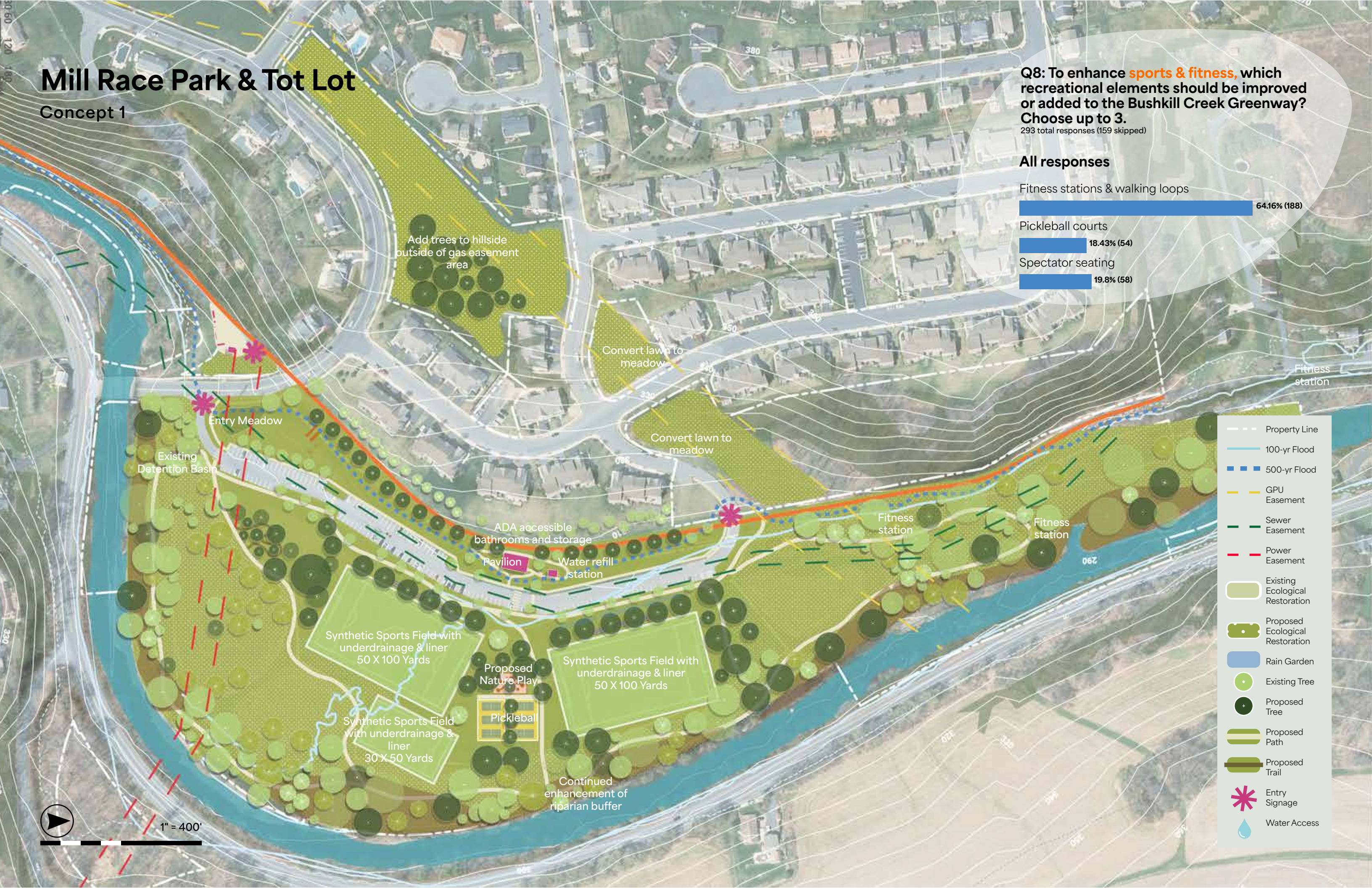
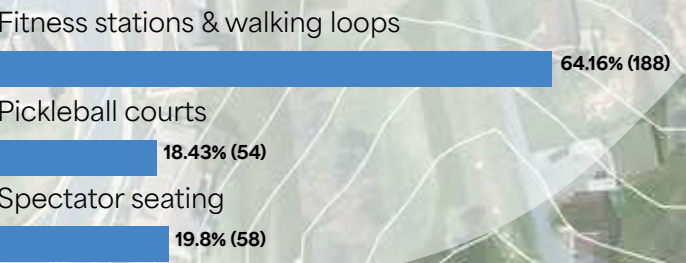


Mill Race Park & Tot Lot

Concept 1

Q8: To enhance **sports & fitness**, which recreational elements should be improved or added to the Bushkill Creek Greenway? Choose up to 3.
293 total responses (159 skipped)

All responses

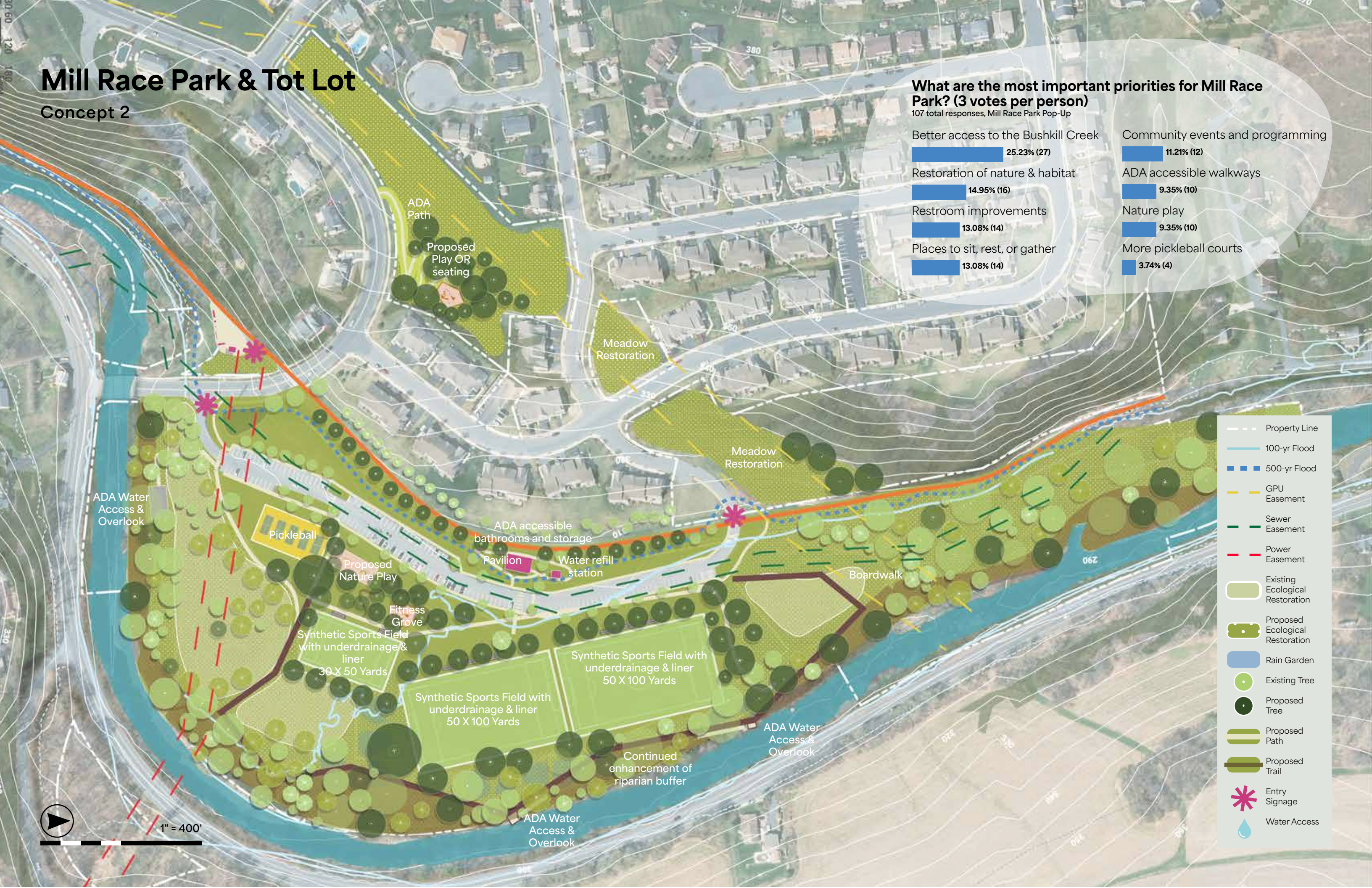
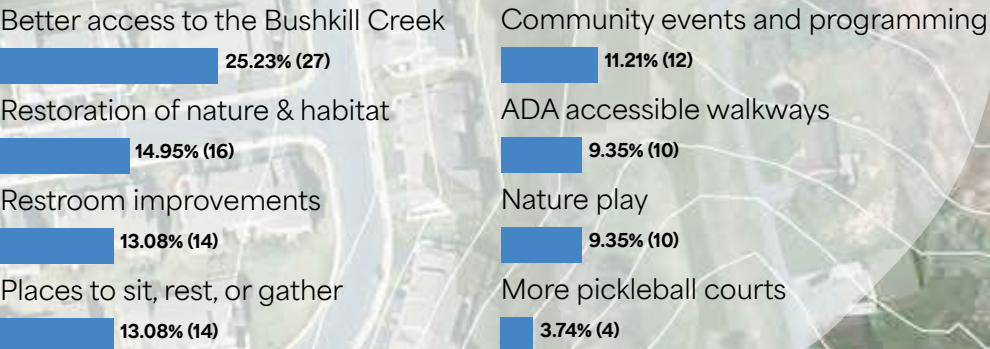


Mill Race Park & Tot Lot

Concept 2

What are the most important priorities for Mill Race Park? (3 votes per person)

107 total responses, Mill Race Park Pop-Up



Proposed Materials



Boardwalks



Ecological Restoration - Meadow



Ecological Restoration - Riparian Buffer



Ground Murals



Ecological Restoration - Floodplain restoration



Upgraded Bathrooms



Mill Race Tot Lot



Hillcrest Tot Lot

Natural Play

A collection of natural play equipment including Forest Springers, Stilts, Tree Climber, Crawling Pyramid, and Parkour 2.

Fitness Loops

A collection of fitness equipment including Balance Beam Robinia, Dip Bench Robinia, and Parallel Bars Robinia.

Mill Race Park



Existing

Mill Race Park: 100-year flood event



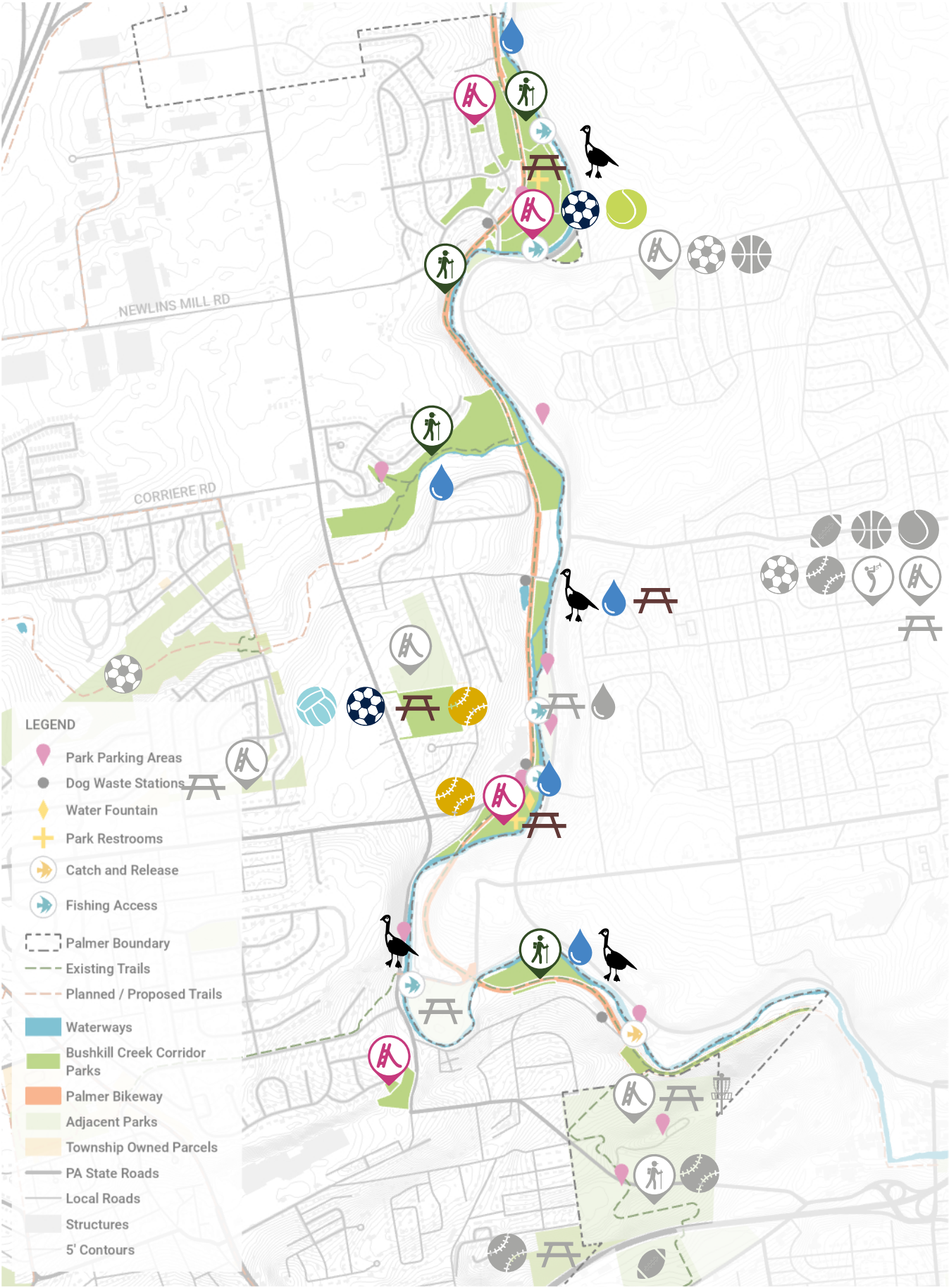
Existing

Recreational Resources

Amenities & Programming

LEGEND:

- Hiking / Walking Trails
- Play Areas
- Live Music
- Picnicking Areas
- Baseball Fields
- Basketball Courts
- Disc Golf Courses
- Football Fields
- Soccer / Multi-use Fields
- Tennis / Pickleball Courts
- Volleyball Courts
- Water Access Areas
- Waterfowl Areas
- Not Within Scope

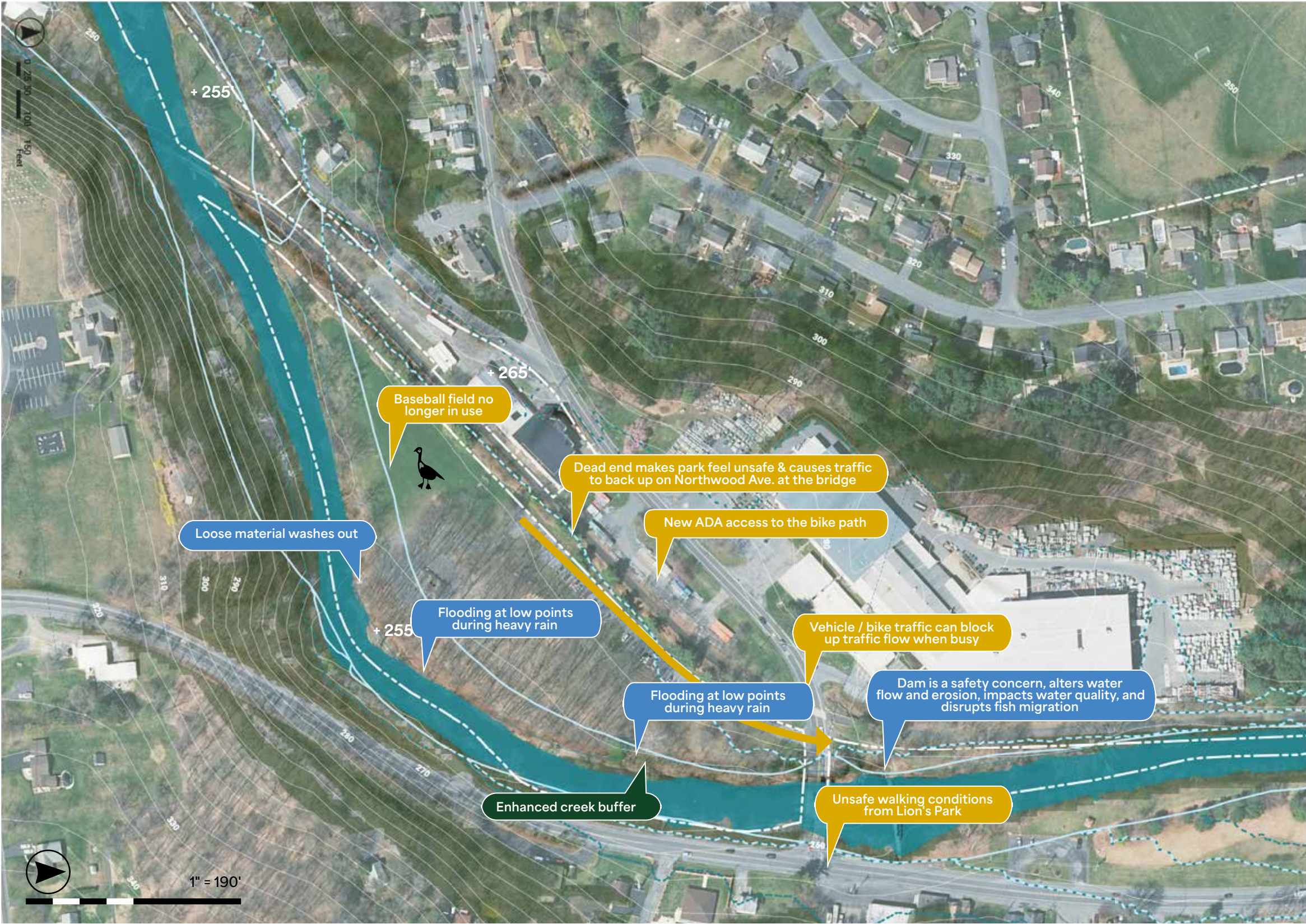


Keystone Park



Penn Pump Park

Analysis



Penn Pump Park - Dam No. 6



Image courtesy of Rudy Miller, Lehigh Valley Live

PROS OF DAM REMOVAL

1. Restoring creek banks enhances water retention capacity, reducing both the frequency/severity of flood events.
2. Stream restoration improves water quality by reducing sedimentation and enhancing overall ecosystem health.
3. Restored fish passage & aquatic habitat for fish & freshwater mussels
4. Removing dams eliminates a public safety hazard & increased liability for the Township
5. The dam is a focal point for recreation, contributing to park congestion and increased law enforcement presence.
6. Funds are available through DRBC mitigation funds, NFWF, PA DEP, PA DCNR, and Northampton County



Dam Removal Process

Dam #2 Case Study by Wildlands Conservancy



Day 1: Notching & drilling



Day 2: Demolition & removal



Month 1: Currents re-forming the stream bed



Month 1: Riffles forming where dam once stood

Mill Race Park Ecological Restoration



Day 1: Riparian Buffer installation



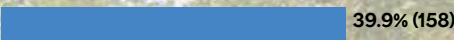
Year 1: Native planting buffer

Fishing Pier at the former Dam 6

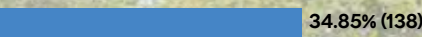
Q6: To enhance visitation, which offerings should be added to the Bushkill Creek Greenway? Choose up to 3.
176 Palmer Township responses (11 skipped)

All responses

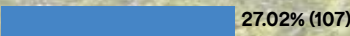
Ecological education (trout, mussels, bird-watching, etc.)



Foraging & plant identification walks



Play, Nature-based



Fishing pier at Dam 6 with
interpretive/historic signage

Wood duck boxes
(some existing)

Narrower stream channel

Native riparian corridor restoration

Existing

Seeded
mussell beds

Invertebrates & expanded
fish populations

Penn Pump Park

Concept 2

Q7: To enhance amenities & safety, which elements should be improved or added to the Bushkill Creek Greenway? Choose up to 3.

396 total responses (56 skipped)

All responses

Signage (historic, plants, educational, wayfinding, etc.)

42.17% (167)

Water fountains & bottle-filling stations

52.78% (209)

Public restrooms

57.07% (226)

Nature play

ADA accessible
fishing pier &
seating

Remove Dam #6, restore riparian
edge and restore riffle and pools
within creek

- Property Line
- 100-yr Flood
- 500-yr Flood
- GPU Easement
- Sanitary Sewer Easement
- Existing Ecological Restoration
- Proposed Ecological Restoration
- Rain Garden
- Existing Tree
- Proposed Tree
- Proposed Path
- Proposed Trail
- Entry Signage

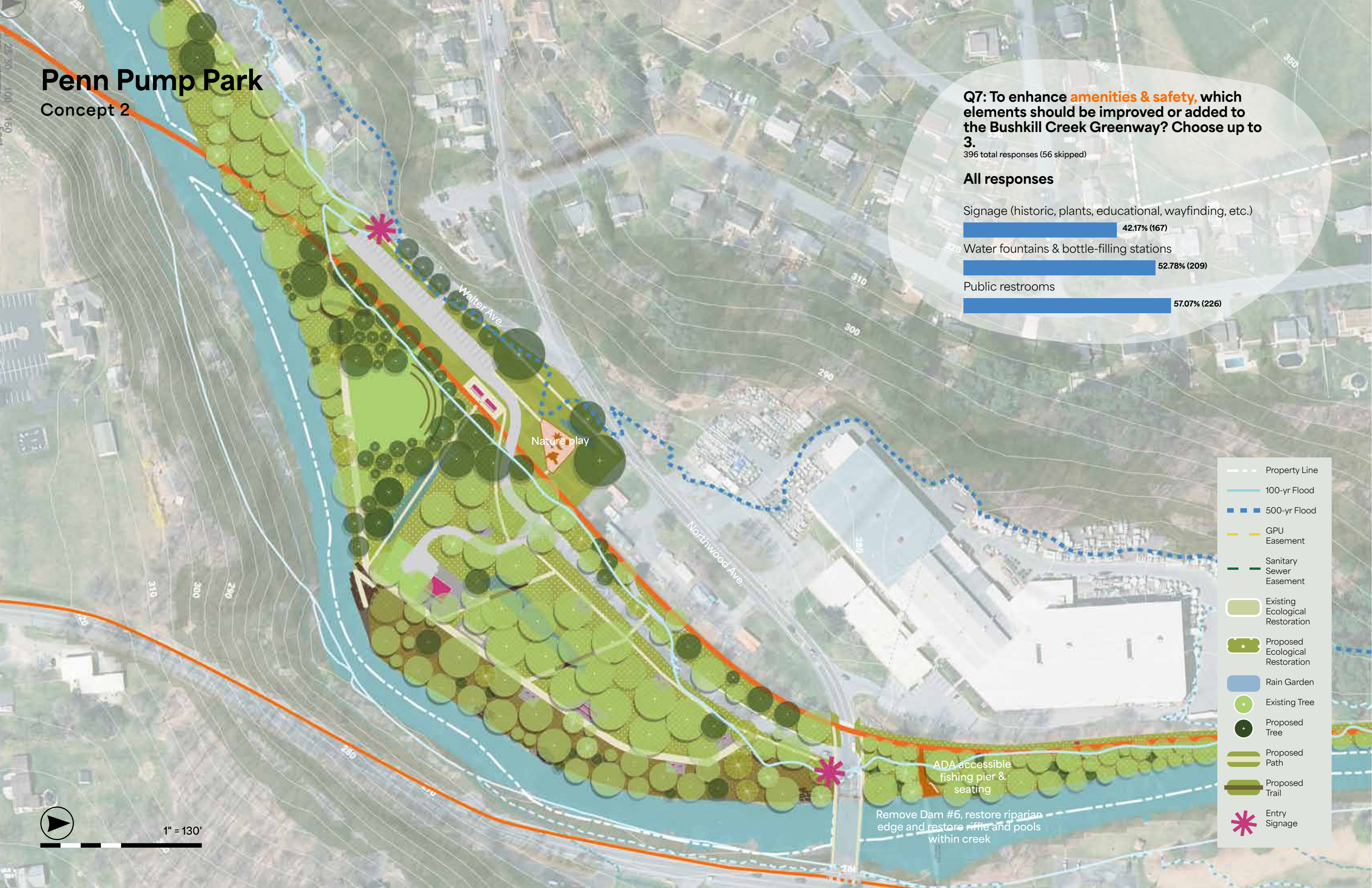
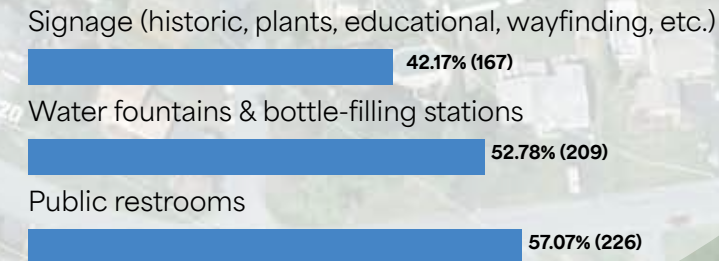
1" = 130'

Penn Pump Park

Concept 2

Q7: To enhance amenities & safety, which elements should be improved or added to the Bushkill Creek Greenway? Choose up to 3.
396 total responses (56 skipped)

All responses



Penn Pump Park Pavilion



Existing

Expanded picnic area & relocated bathrooms

Enhanced native planting
to enhance root systems in
forested zones

Penn Pump Park Floodplain Improvements



Existing



Existing bocce court

ADA path

Enhanced native planting to preserve root systems for forested zones

Group picnic area

Nature play

Native plants & interpretive signage

Floodplain improvement with ADA accessible pathways

Northwood Avenue Connectivity



Blinking signal
pedestrian
crossings

Bump-out
crosswalks

Fill sidewalk gaps to
enhance walkability

Clear brush to
enhance signage
visibility

Native planting
buffer to filter
roadway runoff



Existing

Penn Pump Park

Connectivity



Bump-out
Crosswalks

Sidewalk

Buffered Bike Lane

Forks Township's
Lions Park

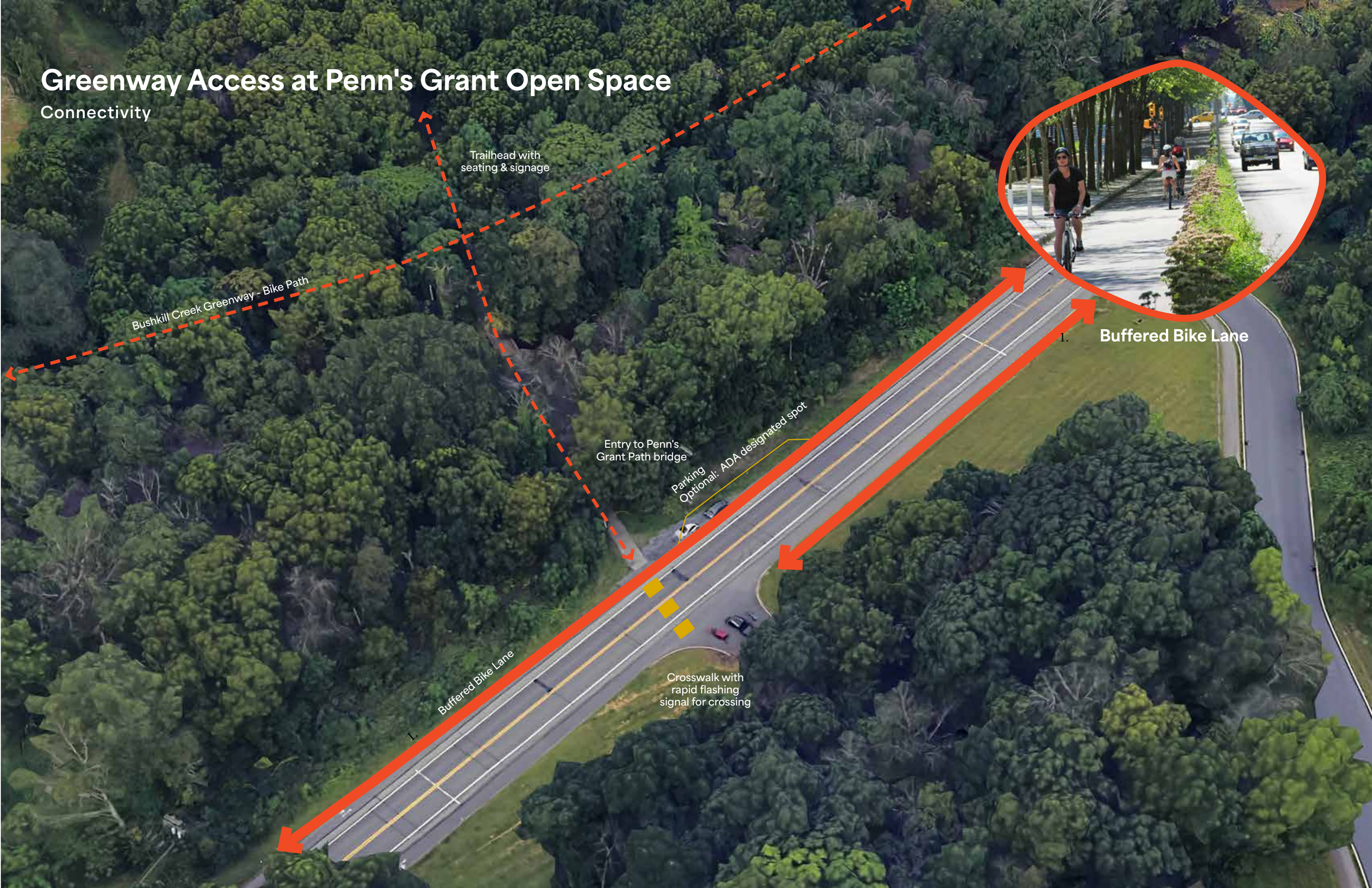
Sidewalk

1. Buffered Bike Lane

Bushkill Creek Greenway - Bike Path

Greenway Access at Penn's Grant Open Space

Connectivity



Bushkill Creek Greenway - Bike Path

Trailhead with seating & signage

Entry to Penn's Grant Path bridge

Parking
Optional: ADA designated spot

Crosswalk with rapid flashing signal for crossing

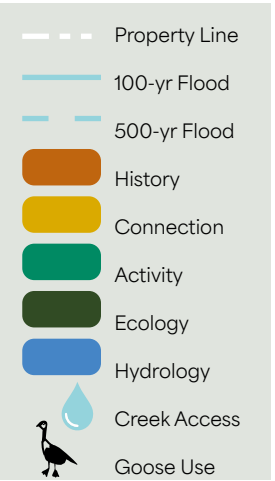
Buffered Bike Lane

Buffered Bike Lane



Penn's Grant Open Space

Analysis



Penn's Grant Open Space

Concept



Increase railing height to 42"



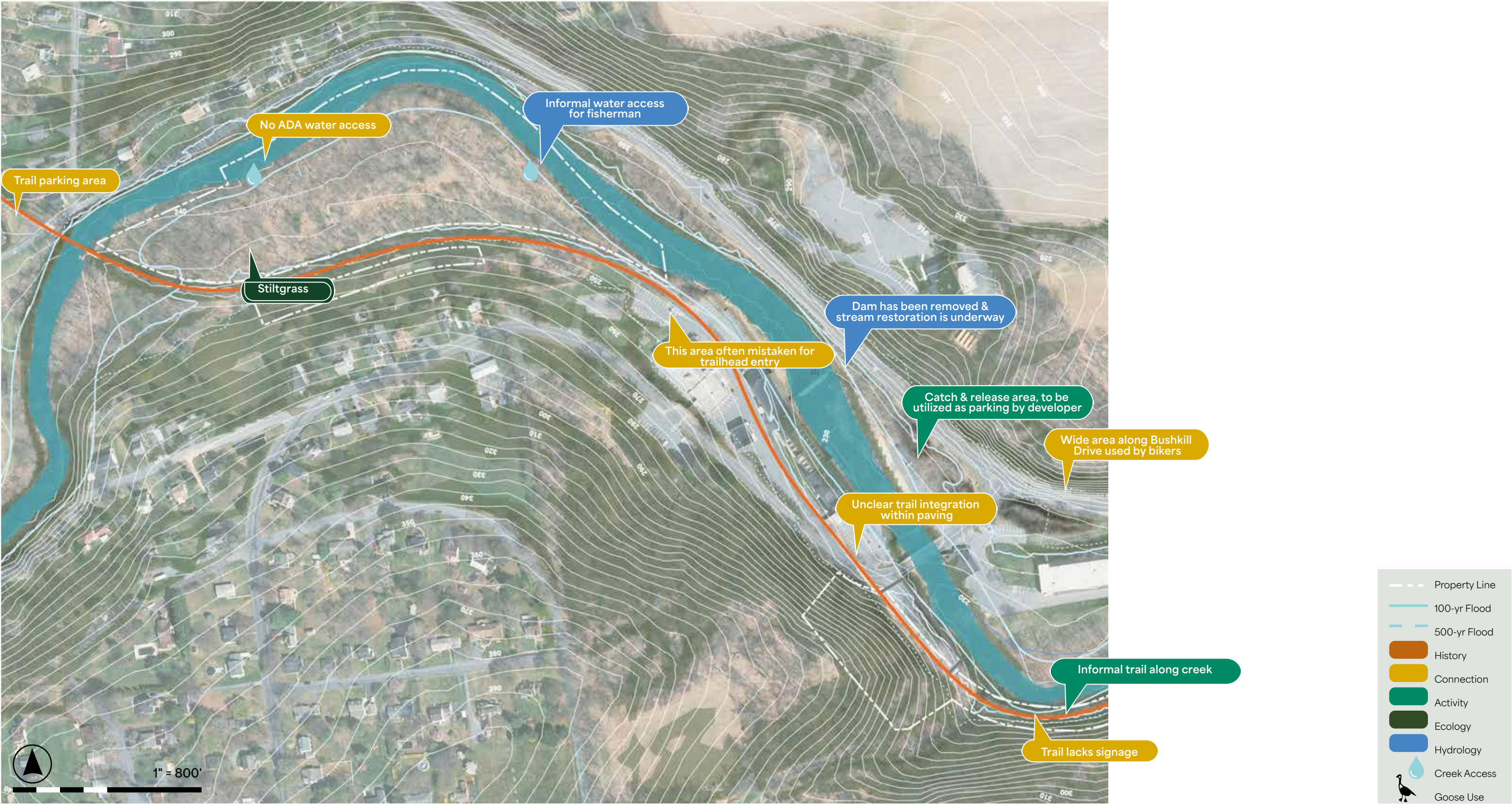
Focus on upland erosion control



Integrate seating & public art

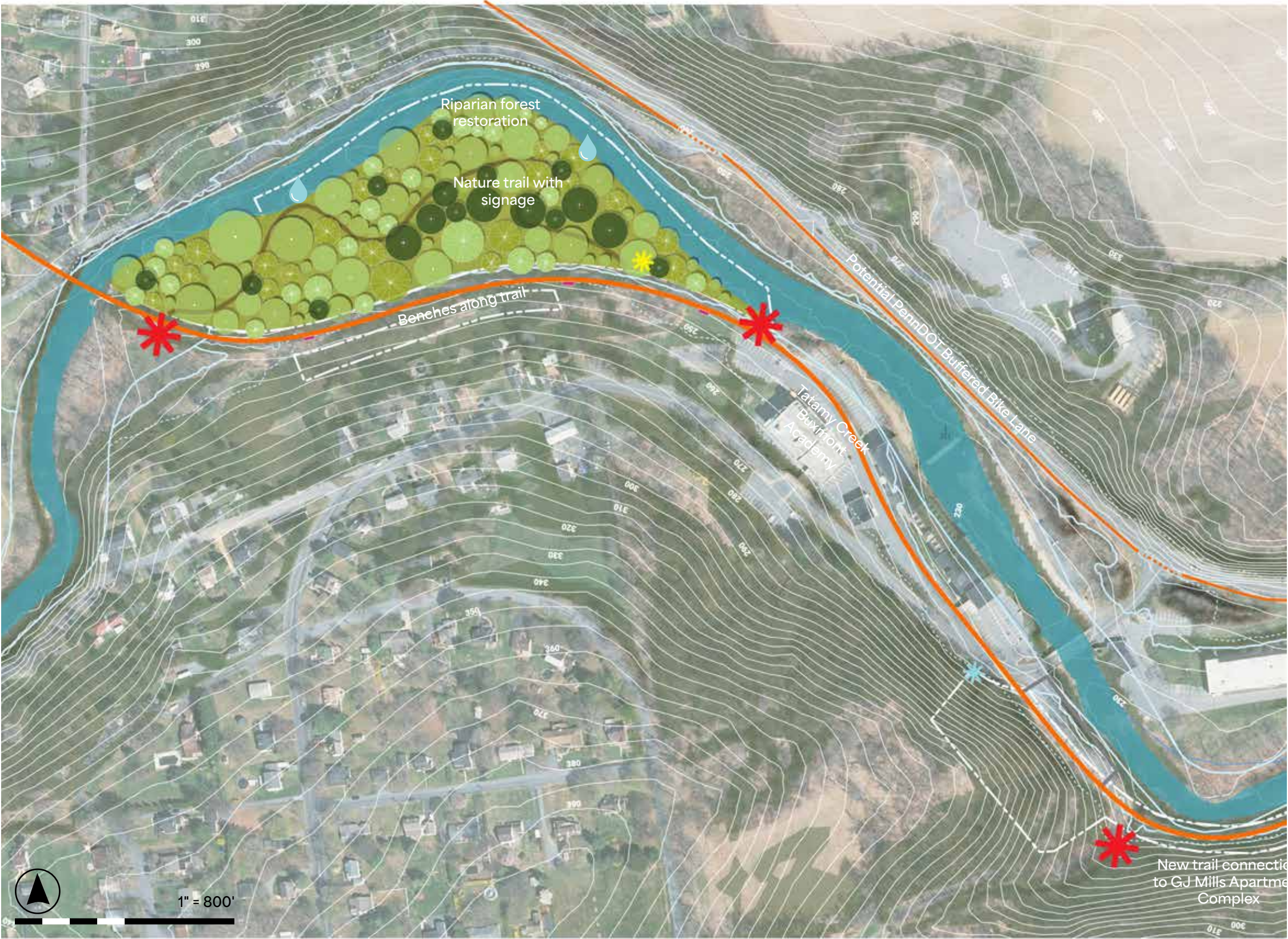
Wildlands Conservancy Binney & Smith Preserve

Analysis



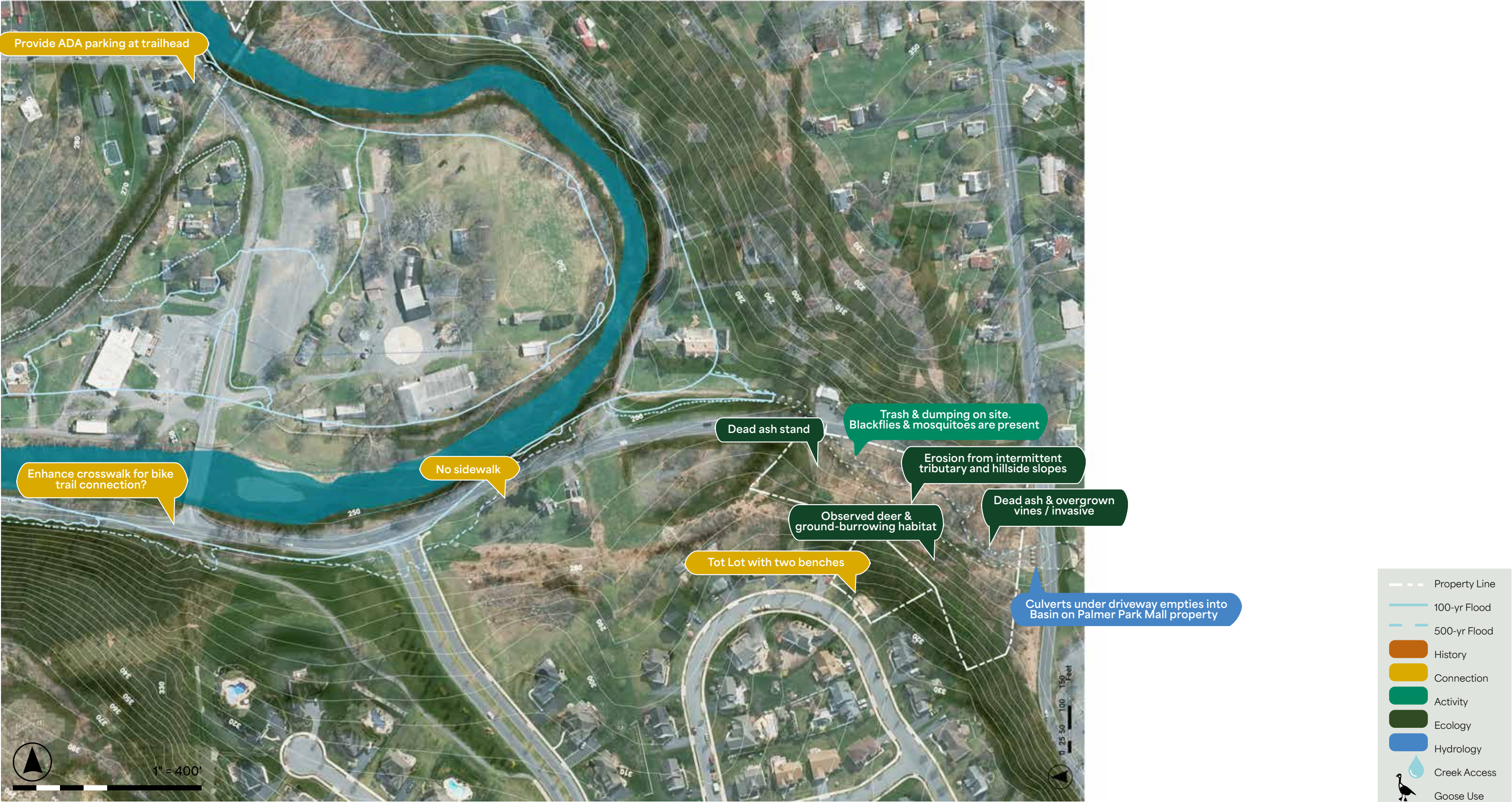
Wildlands Conservancy Binney & Smith Preserve

Concept



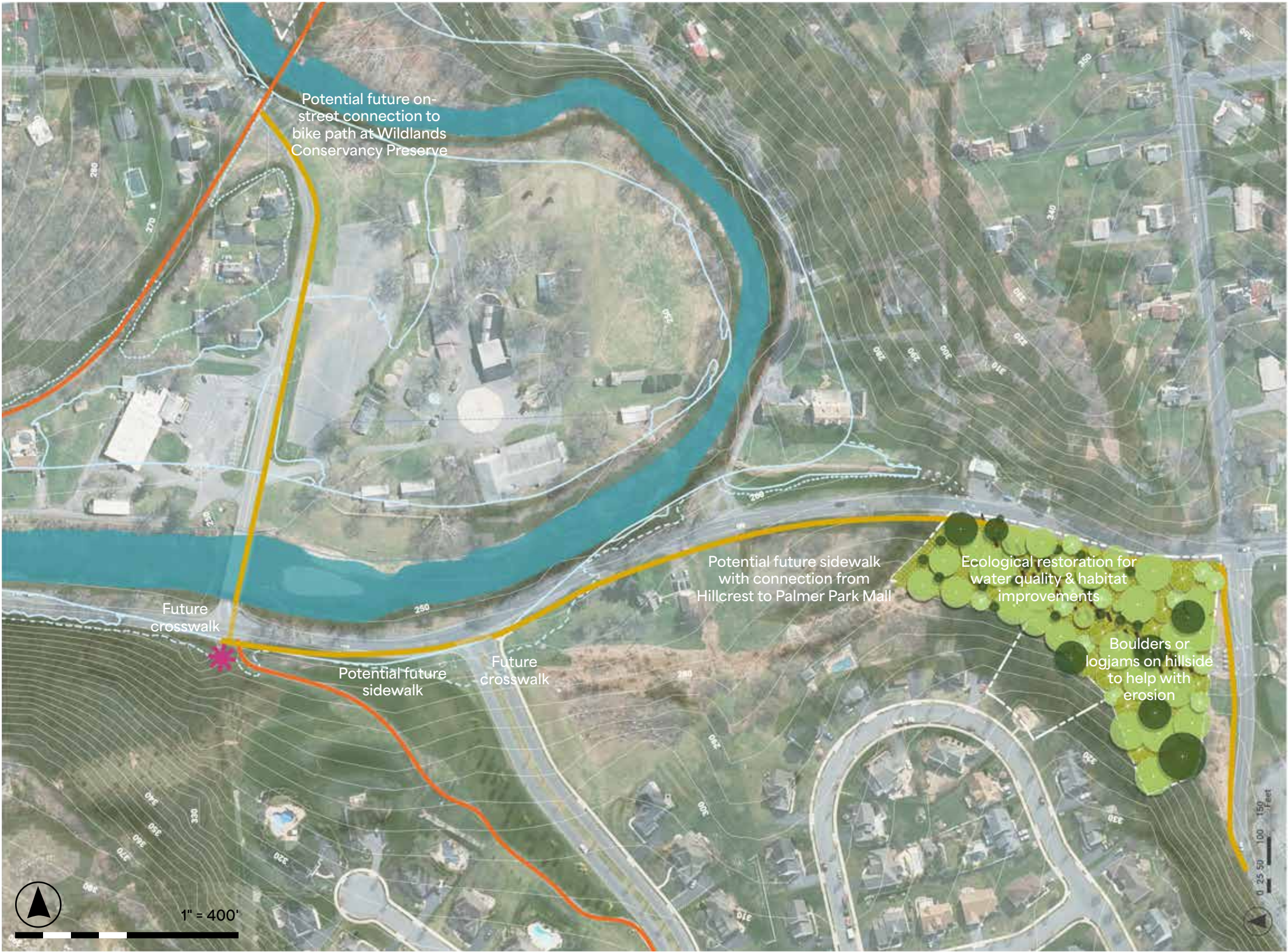
Hillcrest Open Space & Morningside Tot Lot

Analysis

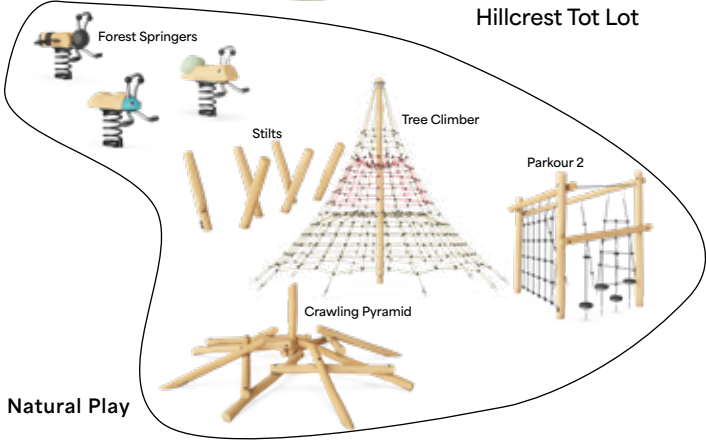


Hillcrest Open Space & Morningside Tot Lot

Concept



Hillcrest Tot Lot



Natural Play

- Property Line
- Proposed Ecological Restoration
- Proposed Sidewalk
- Entry Signage

Bushkill Creek Greenway



NTS

Next Steps

Attend the next public event at Palmer Township Community Building:
3/2, 7 PM, Board of Supervisors Meeting

Follow along for project updates:
www.palmertwp.com/bushkill-creek-greenway.html

Questions?
Email info@omnes.studio