

Today's Palmer

NORTHAMPTON COUNTY, PENNSYLVANIA

MAY
2023



IN THIS ISSUE

- Township Directory 3
- MS4 News 3
- BIP 5
- Suburban EMS 6
- Electronics Recycling 6
- Attention History Buffs 6
- Palmer Trash & Recycling
Guide 6-7
- Palmer Parks & Recreation 8
- Palmer Fire Department 9
- Library News 10-11
- Police News 13
- Codes and Permits 15
- Earth Stewards of
Palmer Township 15
- Charles Chrin Community
Center News 16-30



PALMER POOL PASSES

are available at the Charles
Chrin Community Center,
Opening weekend Saturday
May 27th, Sunday May 28th,
& Monday May 29th!



MOVIES

IN THE PARK AT DUSK:

Wednesday August 16th, 2022

**PALMER TOWNSHIP
COMMUNITY WEEKEND**

August 17-20, 2023 Four Days of Fun!



*Mark Your
Calendars!*



VISIT OUR WEBSITE

www.palmertwp.com

3 Weller Place, Palmer, PA 18045 • T 610-253-7191 • F 610-253-9957

COOKE

INSURANCE AGENCY

Family Owned For 48 Years
Personalized and Friendly Service



- AUTO • LIFE
- HOME • BUSINESS

Please Call Us For A Free Quote

606 Stones Crossing Road, Easton, PA 18045
Located in Palmer Township, just 1.5 miles from Route 33

610-258-9675
www.CookeInsuranceAgency.com

Great whole foods for a healthier you!

Essence of Health

Featuring Our Juice Bar

- Organic Fresh Juices
- Organic Smoothies
- Wraps/Hot Sandwiches
- Soup and Salad

Vitamins & Health Products

STORE HOURS:

Monday-Friday: 10am-6pm
Saturday: 10am-5pm

Juice Bar Hours:

Monday-Friday: 10:30am-5:30pm
Saturday: 10:30am-4:30pm

3615 Nicholas St. | Easton, PA 18045
610-252-7707
www.essenceofhealthlehighvalley.com



John G. Sales & Service

2906 Nazareth Rd
Easton PA 18045

610.258.1142



- Oil Changes ■ Lube ■ Brakes ■ Diagnostic Services ■ Exhausts
- Electrical Repair ■ Emissions Testing ■ General Maintenance
- Tires ■ Batteries ■ PA Inspections

Serving the Community Since 1977

ADDITIONAL SERVICES:

- Full Service Gas, VALERO, an American Company
- Buying and Selling Used Cars

Let's get started today!



Crafted

LANDSCAPES &
EXPERT TREE CARE

Expert Tree Care

- Corrective pruning for aesthetics & structural integrity
- Tree removal
- Storm damage cleanup
- Preserving the natural beauty of trees & landscape
- Crane removal service
- Stump grinding

Landscape & Hardscape Design & Installation

- Brick paver patios
- Boulder walls & steps
- Natural fieldstone & block retaining walls
- Landscape lighting
- Mulch & decorative stone

CraftedLandscaping.com
610-533-9285 • Easton, PA





TOWNSHIP DIRECTORY

BOARD OF SUPERVISORS:

Michael Brett – Chair
Joseph Armato – Vice-Chair
Jeffrey A. Young
K. Michael Mitchell
Ann-Marie Panella

Palmer Township Palmer Municipal Building

3 Weller Place, Palmer, PA 18045
T 610-253-7191
F 610-253-9957
www.palmertwp.com

Editor:

Brenda Lazarus
email: blazarus@palmertwp.com

Contributions:

Fax or mail newsletter
contributions to:
Today's Palmer
Palmer Municipal Building
3 Weller Place
Palmer, PA 18045-1975
Phone: 610-253-7191
Fax: 610-253-9957
e-mail: blazarus@palmertwp.com

For information about advertising in Today's Palmer, please call

Denise Morano at 610-346-6126 or
email DeniseOfHTP@yahoo.com



**HOLIDAY
MUNICIPAL BUILDING
CLOSINGS:**

**Memorial Day –
Monday May 29, 2023**

4th of July – July 4th, 2023

MS4 NEWS

MS4 Homeowner Best Management Practices- Rain Gardens

Many homeowners use gardens for different purposes and get great benefits. Some may think that gardening is relaxing and helps relieve their stress from the day. Some people think that it adds beauty or even practicality depending on what you are growing. But did you know that there is another kind of functioning garden that can reduce stormwater runoff? These are called rain gardens and they are designed to soak up excess stormwater runoff from your house roof, driveway, patio, and other paved areas¹. Rain gardens work by being lower in the ground than a regular garden and act as a hole for rain to recharge groundwater. Without rain gardens, this rapidly moving water can carry pollutants like fertilizer, eroded soil, pesticides, anti-freeze, grass clippings and pet waste directly to our streams like the Bushkill Creek¹. However, once a homeowner adds a rain garden, up to 30% more water can be absorbed by the ground than equivalent yard space!

If you are looking for a summer project this year or want to add more plant life to your yard, a rain garden would be a great option to consider! Here are a few things to think about before starting to plant your rain garden:

1. Size of your roof¹
 - a. While this may seem inconsequential, the size of your roof determines how much water will run off your property during a rainstorm. Determining the size of your roof and how much water runs off the roof will help determine the size and depth of your rain garden.
2. Type of soil¹
 - a. The type of soil you have in your yard plays a major role in planning your rain garden. Different soils have different rates that they absorb water. Clay absorbs water more slowly than sand, so if you have clay, it would be best to add compost or dead leaves to loosen the soil¹.
3. How deep the rain garden will be¹
 - a. Keep in mind how deep you want to make your rain garden for drainage and what type of plants would be best suited to the rain garden.

Other aspects to consider are the placement of your rain garden. You want to avoid putting the rain garden directly over any septic systems so that if you have any problems down the road, you will not need to dig up your rain garden to fix it. You also want to choose a spot in your yard that is not always wet because the rain garden should drain within 24 hours. If water does not drain within 24 hours, the standing water can be a breeding ground for mosquitoes¹, and no homeowner wants mosquitoes in their yard. It is also suggested that plants with a variety of colors, shapes, and bloom times should be chosen for your rain garden to encourage pollinators, as well as semi-evergreen plants that will control erosion in the wintertime. For more information on how to establish your own rain garden, visit the source below. To find out what you can do for Palmer, visit palmertwp.com/stormwater.html.

Sources

1. *An introduction to rain gardens*. Penn State Extension. (2022, June 6). Retrieved June 22, 2022, from <https://extension.psu.edu/an-introduction-to-rain-gardens>
2. Picture sourced from: <https://www.ezconst.com/app/uploads/2016/11/rain-garden.jpg>



Brian J. Panella, Esq.

Goudsouzian  Associates

2940 William Penn Highway, Easton, PA 18045
610-813-2135
Wills, Estates, Criminal Defense, Guardianships

Morgan Stanley

Michael R Glovas CFP®, CPWA®

Managing Director - Wealth Management
Financial Advisor
101 Larry Holmes Dr
Easton, PA 18042

+1 610 559-6380

Michael.R.Glovas@morganstanley.com

©2022 Morgan Stanley Smith Barney LLC. Member SIPC.
CRC 3938545 01/22

Wealth Management
Retirement Planning
College Savings Plans

**GOT A HOME
CLEANUP PROJECT?**



Visit www.thebagster.com

Get \$10 Off One Collection:
Promo Code: 265-PTPS

For bigger cleanups, call (800) 869-5566.




ABINGTON MANOR
AT MORGAN HILL
Senior Living & Memory Care Village

- Privately Owned
- Engaged Management Team
- Clean, Bright, Spacious Rooms
- Conveniently Located off I-78
- Proximity to Major Healthcare Networks

Come see for yourself and schedule a tour!
Call (610) 438-9400 or (484) 866-0607
www.abingtonmanor.com

thank you

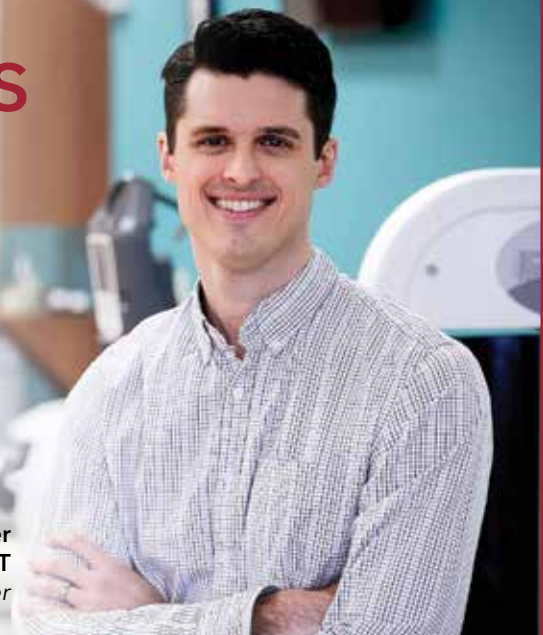
Palmer Township gratefully acknowledges the generosity and support of the businesses and individuals who have placed advertisements in our newsletter. This newsletter has been designed and printed at no cost to you, our residents. We encourage you to patronize these businesses as they play a vital role in the economic stability of our community.

**Choose The Experts
Who Specialize
In You**

GOOD SHEPHERD
PHYSICAL THERAPY 

833 S. 25th Street • Easton
GoodShepherdRehab.org

Jacob Weaver
PT, DPT
Site Manager



AQUATIC THERAPY | OCCUPATIONAL THERAPY | PHYSICAL THERAPY

BUSINESS, INDUSTRIAL AND PROFESSIONAL ASSOCIATION OF PALMER TOWNSHIP NEWS - BIP

Business, Industrial and Professional Association News



The BIP held its annual “State of the Township” luncheon on January 18, 2023, at the Marblehead Chowder House. Palmer Township Board of Supervisors Chairman, Michael Brett, and Township Manager, Bob Williams, spoke about the changing demographics and current developments under review. They also spoke about the townships MS4 Program and that the township partnered with Herbert, Rowland, and Grubic, Inc. (HRG), an engineering firm that specializes in stormwater management. Township committees have been established with resident and business owners to begin reviewing stormwater management improvement projects that will benefit through the townships MS4 (Municipal Separate Storm Sewer Systems) Program.

The Today’s Palmer newsletter will continue to educate our residents about the MS4 Program. Check your Table of Contents in the newsletter quarterly for updated information.



Welcome to our new BIP Members:

The BIP would also like to welcome our newest members: Thomas Beauduy of the Charles Chrin Companies and William Koch of Spectrum of Floors.

Mark your Calendars...

The 2023 BIP Golf Outing is confirmed for Friday, September 15, 2023, at the Southmoore Golf Course, 235 Moorestown Drive, Bath, PA.

PALMER TOWNSHIP TREE PLANTINGS

Over the past few months, the Palmer Township Shade Tree Commission (STC) has been working with the Public Works and Parks Departments to assess street and park trees throughout the Township. A list of trees was created from this inventory to be removed due to death and disease. This large removal was needed due to outbreaks of Emerald Ash Borer, Dutch Elm Disease, and other diseases.

Dutch Elm Disease and Emerald Ash Borer are devastating to trees because there is no medicine or natural predators to control the populations. To reduce the number of dead street trees, Township staff coordinated the removal of street trees in the public right-of-way. The removal of these trees started in October 2022, and is projected to finish in April or May of 2023.

Although the Township has removed many street trees, they will be replanted during the proper growing season near the same area where they were removed. Some tree species survive better when planted in the fall versus the spring.

During early 2023, the Palmer Township Public Works and Parks Departments worked together to plant 13 trees along the bike path. These plantings were an early initiative to start planning for Earth Day and Arbor Day. The Township also had an Arbor Day Celebration where six (6) trees were planted at the Charles Chrin Community Center site.

The STC continues to coordinate with Township departments to ensure the long-term health of shade trees in Palmer Township. To find out more about how you can get involved with the STC, please visit <https://palmertwp.com/shade-tree-comm.html>.



PALMER TOWNSHIP SHADE TREE COMMISSION LOOKING FOR MEMBERS



Do you have a passion for trees and our environment? Are you interested in learning more about how you can make a difference in your community? Join Palmer Township Shade Tree Commission to plant and protect our street trees in Palmer Township! Must be a resident of Palmer Township to join, please contact the Palmer Township Municipal Building at 610-253-7191 ext 1130, or email pstrasko@palmertwp.com.

EDUCATION:

Suburban EMS is dedicated to providing educational opportunities to our employees that enrich and enhance their abilities and knowledge in emergency medical care & transportation. These classes focus specifically on our staff and surrounding emergency responders. Our in-house instructors can now teach EMR and EMT certification classes in addition to EVOC/EVDT and AHA CPR. Students perform clinicals on our ambulances every week with defined assignments related to the week's classroom material.

Becoming an EMT has never been easier, and the best part is that you can earn while you learn. Suburban EMS is offering a PA Bureau of EMS-approved EMT-Basic Certification Course. Train for a rewarding Prehospital Emergency Medical Services career and get paid while you earn your certification.

We offer Competitive Salaries, Vacation, Sick Time, Medical, Dental, Vision Insurance, 401k Retirement plans, and other benefits. For more information about our program please email rbruce@suburbanems.org.

CLASS DATES FOR 2023:

Spring - April 3 - May 25

Summer - June 26 - Aug 17

Fall - Sept 25 - Nov 16

EMPLOYMENT:

Here at Suburban EMS, we always look for quality Paramedics, EMTs, Dispatchers, and Volunteers to enhance our workforce. If you want to become part of a winning team and work in a rewarding field, contact us to learn more.

STARTING PAY RATES:

EMT: \$18/hr

Advanced EMT: \$22/hr

Medic: \$26/hr

Dispatch: \$20/hr

Wheelchair driver: \$15.25/hr

Stretcher van driver: \$16/hr



Suburban EMS follows a strict policy that we do not discriminate in providing services and care to the patients we serve, or in the terms and conditions of employment or membership for our staff. We will not discriminate on the basis of race, color, national origin, ancestry, religion, sex, age, disability, political belief, military service, sexual orientation, gender identity, or any other protected class. It is at all times, the intent of Suburban EMS to comply with State Human Relations Act provisions and all federal discrimination and employment laws.

ELECTRONICS RECYCLING

The PA CDRA Law made it illegal to dispose of electronic waste in landfills and requires these items to be recycled. Electronics can be taken to the following locations:

Einfalt Recycling and Salvage
221 Bushkill St, Stockertown, PA

Flat screens, wiring and computer towers

WEBSITE: www.einfaltinc.com

PHONE: 610-759-7998

DROP-OFF: Mon – Fri; 7:30 am to 4:00 pm; Sat 8 am to 12 pm

Clean Earth, (formerly AERC), 2591 Mitchell Avenue,
#6609, Allentown, PA

Accepts most electronics

WEBSITE: www.cleaneearthinc.com

PHONE: 610-797-7608

DROP-OFF: 2nd Friday of the month from 9:00am – 3:00pm
Due to frequent market changes, it is strongly suggested you call and confirm pricing, hours, days, and items you wish to drop-off.

GER Solutions, LLC
635 S. Tenth St., Unit 600, Allentown, PA 18103

Accepts most electronics

Not currently accepting: smoke detectors, VHS tapes, cassette tapes and full-size refrigerators.

WEBSITE: www.gersolutions.net

PHONE: 610-443-1776

DROP-OFF: Mon, Wed and Fri; 9:30 am to 12:00 pm
 and 1:00 pm to 4:00 pm



Attention History Buffs:

The Palmer Historical Society invites your membership and attendance at their informative and educational meetings featuring local and area subjects of interest.

Meetings are held in the Palmer Library 10:00AM to Noon February – May and September – November.

Membership is \$5.00 per year and includes invitation to all events.

Interested? Please contact Ed Dean at 610-253-2281



CURBSIDE RECYCLING

All carts should be placed curbside by 5:00am. Materials placed outside of the carts will not be collected. Lids need to be closed and not overflowing to prevent litter and cart lid breakage.

PAPER – office and school paper, newsprint, junk mail, paper bags, phone books, magazines, catalogs, envelopes, wrapping paper (no metallic paper or bows.) Shredded paper should be bagged and placed in the trash cart.

CARDBOARD – paper towel rolls, cereal, cracker, and pasta boxes, shipping and shoe boxes, manila folders, etc. No wax-coated, pizza or other food, paint or oil contaminated boxes. Flatten and/or cut up to release from the cart easily.

PLASTIC BOTTLES OR CONTAINERS – Rinsed household tubs and bottles (such as soda, water, milk, juice, shampoo, detergent, condiments, yogurt, margarine, to-go containers, pet food, etc.) No plastic bags or Styrofoam. Look for the recycling triangle on the bottom with these numbers inside #1, #2, #3, #4, #5, #6, #7. Lids attached.

FLEXIBLE (NOT RIGID) PLASTICS – these are able to flex or wrap and are rinsed clean of food contamination. Acceptable items include plastic shopping bags, potato chip and snack bags, produce bags including salad and carrot bags, shredded cheese packages, pet treat pouches, case wrap, shrink film, bread bags, cereal bags, bubble wrap, drink pouches, paper towel and toilet paper overwraps, detergent pouches, shipping bags.

GLASS - Rinsed clear, brown, and green bottles and jars. Discard lids.

CANS – Rinsed aluminum, bi-metal, and tin cans as well as empty aerosol cans.

METAL POTS AND PANS

CARTONS – Rinsed food cartons that contain milk, juice, broth, cream, egg substitutes, soup, soy milk, and wine boxes.

No food contaminated items, electronics, textiles, construction debris, or yard waste.

2023 HOLIDAY COLLECTIONS

Waste and recycling collections will be delayed by one day following these holidays: Memorial Day, the Fourth of July, Labor Day, Thanksgiving, and Christmas.

CURBSIDE TRASH

- All trash goes into your green cart with the green lid. Materials outside the cart will not be collected.
- Trash should be bagged before being placed in the cart. Bagging helps keep your cart clean and reduces windblown litter.
- Prohibited items include recyclables (see left), tires, hazardous waste, liquid paint, motor oil, electronics, yard waste, construction debris (wood, concrete, window panes, etc.), dirt, rock, and car parts.
- **Overfilled carts or carts containing prohibited items will not be collected.**



RECYCLING DROP-OFF LOCATIONS

Open to Palmer Residents & Businesses Only

Hartley Avenue Recycling Center

Monday, Wednesday, Friday,
8:00am– 4:00pm
Saturday, 10:00am-3:00pm
Sunday, 12:00pm-4:00pm

Accepts paper, cardboard, plastic bottles and containers, glass, cans, scrap metals, and yard waste (no more than 3 small bundles of yard waste (no larger than 3' x 3' and not exceeding 40 lbs.) per visit. Free to Palmer residents and businesses.

Berks Street Yard Waste Composting Center

April through November
Saturday - 10 AM to 4 PM
Sunday - 12 Noon to 4 PM
Wednesdays - 9 AM to 3 PM

Accepts large amounts of yard waste for a small fee. NO plastic rope, bags, or twine; grass clippings, tree stumps, soil or dirt, sod, wood, animal excrement, or noxious weeds including bamboo of any kind. Tree limbs must be less than 12" inches in diameter.

Speed limit within the center is 5 MPH at all times.

Up-to-date and more comprehensive information is always available at www.palmertwp.com.

UPCOMING SPECIAL CURBSIDE COLLECTIONS

Place curbside on your scheduled collection day, but will be collected that week by a separate vehicle.

BULK ITEM COLLECTION: Weeks of May 8, September 11, & November 27

One item per collection. Bulk items are defined as items too large to fit into the trash cart; with the general rule of thumb being an item the approximate dimensions and weight of a standard size sofa, and that can be carried by two (2) men. Acceptable items include plastic dishwashers, furniture, mattresses and box springs (wrapped in plastic), rugs rolled up and tied and no larger than 3' x 6'. Unacceptable items include, but are not limited to, electronics, construction debris (i.e. wood, sinks, toilets, doors, windows, siding, roofing shingles, etc.), large glass items (i.e. glass tables, china cabinets, or window panes), hazardous materials, tires, yard waste, grass clippings, or additional household trash. If you can't wait for a bulk item collection, you may request a special bulk item collection by contacting Waste Management Customer Service at 800.621.2100. Identify yourself as a resident of Palmer Township, PA to receive the Township's \$40 per item pickup price. Be sure to get the confirmation number in the event follow-up is needed.

METAL AND APPLIANCES COLLECTION: Week of September 25

One item per collection. Appliances such as microwaves, air conditioners, dehumidifiers, refrigerators and freezers (remove doors; FREON does not need to be removed); washers, dryers, metal dishwashers, steel or aluminum tire rims (w/o tires), hot water heaters, metal swing sets (taken apart and tied up), bicycles, BBQ grills (gas, propane, and/or charcoal removed), and push-behind lawnmowers (oil and gas removed). No electronics or plastic dishwashers. Metal items and appliances, as described here, can be taken to the Palmer Township Recycling Center, 3600 Hartley Avenue, year-round.

YARD WASTE COLLECTION: June 5 and November 6

Unlimited amounts of yard waste (leaves, branches, twigs, flowers, roots, bushes, and garden clippings) will be collected curbside. Tree limbs must be less than 4" inches in diameter. NO plastic rope, bags, or twine, grass clippings, tree stumps, loose soils, sod, or any wood or tree limbs over four (4) inches in diameter, animal excrement, noxious weeds, or bamboo of any kind or soil.

LEAF COLLECTION: Eight weeks in the Fall (typically mid-October to second week of December)

Residents must rake their leaves into the street and close to the curb. This collection is highly dependent on weather conditions.

CHRISTMAS TREE COLLECTION – First three (3) full weeks in January

Remove any transport bags, tinsel, ornaments, lights, and tree stands.

PALMER PARKS AND RECREATION DEPARTMENT INFORMATION

It is the Parks & Recreation Department's goal to provide citizens with a safe environment in which recreational opportunity can be maximized. Due to the wide variety of patron needs and use of Township property, it is necessary to establish the following rules and regulations.

EVENT REPRESENTATIVE MUST HAVE PERMIT WITH THEM FOR DURATION OF THE EVENT.

Reservations: Will be available to Palmer residents only for the month of January, beginning on January 4th, 2023 at 9:00am. Park rentals will become available to the general public on February 1st, 2023 at 9:00am. All reservations must be completed in person at the Charles Chrin Community Center of Palmer Township, located at 4100 Green Pond Road Palmer, PA 18045, Phone: 610-252-2098



****Pavilion rentals are prohibited during Palmer Community Weekend.***

FEES:

- **PENN PUMP:** There are 2 permits available per day at Penn Pump Park. Penn Pump permits allow the consumption of alcohol and access to restrooms. Rental time 8:00am–10:00pm
 1. Penn Pump Pavilion Permit *Not to exceed 150 people. Allows parking near the pavilion and pavilion access. **Residents \$100.00**
 2. Penn Pump Picnic Permit *Not to exceed 50 people, required for 10 or more people. Picnic permit for Penn Pump allows access to tables outside of the pavilion. **Residents \$50.00**
- **RIVERVIEW:** Permit for Riverview Park allows the responsible use of alcohol. Rental time 8:00am-10:00pm. **Residents \$100.00 & Non-Residents \$175.00**
- **BIP PAVILION, BRIARCLIFFE, FAIRVIEW, KEYSTONE, & MILL RACE** – Alcohol prohibited. Rental time 8:00am-10:00pm. **Residents \$75.00 & Non-Residents \$150.00**

****Briarcliffe is unavailable for rent on weekends from Memorial Day to Labor Day***

Spring Cleaning

\$4 Off LIQUID SPARKLE WASH PACKAGE
ENTER CODE 3658 Reg \$16 | Now \$10

\$2 Off CLASSIC WASH PACKAGE
ENTER CODE 4516 Reg \$10 | Now \$8

Sparkle Car Wash

Prices shown do not include tax. Offers Exp 6/30/23. Experience the area's safest and most technologically advanced car wash serving Stroudsburg, Easton and now Mount Pocono!
For Locations/Directions: SPARKLECARWASH.COM | OPEN DAILY 7 AM - 8 PM



LITHIUM-ION BATTERIES SAFETY TIPS

Lithium-ion batteries are used in various devices. These batteries are commonly used in cell phones, laptops, tablets, electric cars, e-bikes, and cordless power tools and vacuums. Lithium-ion batteries store a large amount of energy and can pose a threat if not treated properly. Like any product, a small number of these batteries are defective. They can overheat, catch fire, or explode leading to a violent fire.

Within recent years there has been an increase in serious fires that have resulted from improper storage, charging, and disposal of rechargeable and lithium-ion batteries or devices that use them.

Be smart when using any devices powered by lithium-ion batteries:

- When purchasing devices, be sure the equipment has tested and listed by a qualified testing laboratory such as Underwriters Laboratories. The UL mark shows that the product has been safety tested.
- Follow the manufacturer's instructions for charging and storage.
- Do not charge a device under your pillow, on your bed, or your couch.
- Always use the manufacturer's cord and power adaptor made specifically for the device.
- Keep batteries/devices at room temperature. Do not place in direct sunlight.
- Store batteries away from anything flammable.



If a battery overheats or you notice an odor, change in shape/color of the battery compartment, leaking, or odd noises from the device discontinue use immediately. If safe to do so, move the device away from anything that can catch fire and call 9-1-1.

Battery Disposal:

- Do not dispose of batteries in the household trash or recycling bins.
- Recycle batteries by taking them to a battery recycling location or visiting Call2Recycle.org or contacting 1-877-273-2925 for a site location.
- Recycle batteries on one of Pennsylvania's Household Hazardous Waste Collection dates.
- When preparing batteries for recycling, always cover the electrical contacts or battery ends with non-conductive tape such as electrical or vinyl tape, or seal individually in separate plastic bags like Ziploc bags.

HELP US FIND YOU; POST YOUR ADDRESS NUMBERS

During an emergency, minutes, even seconds matter. When you call 9-1-1, you expect and deserve a quick response. You can assist Fire, Police, and EMS agencies with providing the service you deserve by posting your address numbers.

Navigation systems like Google Maps and Waze assist us getting to you, but there are limitations. Once we are on your street, or in the general area, we look for address numbers. In

Palmer Township, each residential property posts their address numbers in differing methods – some have no address numbers posted or are obstructed from view. A uniform system is the best approach in assisting emergency responder to respond to your emergency safely and swiftly.

Palmer Township codes require new and existing buildings be provided with approved address



identification that is legible and placed in a position that is visible from the street or road fronting the property. The numbers are to be a minimum of 4 inches high with a 1/2 inch stroke width. Where access to the residence is by means of a private roadway and the building is not visible from the public way, a monument or pole must be used to identify the structure. Address numbers must be maintained clear from obstructions.

To assist emergency responders, we ask that reflective address numbers to be placed in one of the following locations:

- On the property's mailbox
- On the building or structure front entrance door if such is located within 30 feet of the roadway.
- On a front porch post of the building or structure if such location is within 30 feet of the adjacent roadway.

Mounted on a stand-alone post or pole in the front yard.

Approved address numbers and/or signs may be purchased from any local hardware store or online from multiple vendors. Please contact the Fire Commissioner with any questions at 610-559-9809.

EASTON AREA PUBLIC LIBRARY - PALMER BRANCH

1 Weller Place, Palmer, PA 18045 • 610-258-7492 • www.eastonpl.org

SUMMER READING 2023

Connect with the Easton Area Public Library for Summer Reading 2023 from June 12 to August 14! This summer's theme is "All Together Now," celebrating friendship, unity, and diversity. Special performers for this summer include Kit's Interactive Theater, Eyes of the Wild, and Grins & Grins. Watch out for pop-up storytimes around Easton!



Readers of all ages are invited to join in the fun! Visit the library, read books, and earn prizes. New this year, kids can earn a chance to pie a librarian in the face! Adults are also invited to read (or listen to!) books this summer and enter to win gift certificates from local businesses. Registration opens June 1. For more information, visit eastonpl.org.



NEW EVENT CALENDAR

Keep up to date with all of the Library's programs by visiting our new calendar and registration portal. Finding and registering for programs is a breeze! Visit our website at eastonpl.org or the calendar directly by scanning the code or visiting bit.ly/eastoncal

Questions about the calendar? Chat with any of our library staff for assistance.



GET A LIBRARY CARD

Sign up for a library card from the Easton Area Public Library! This card provides access to both the Palmer Branch and the Main Library located downtown. We have books, DVDs, magazines, e-books, board games, wireless hotspots, museum passes, and more! All permanent residents of the Easton Area School District may obtain cards at no charge. All you need is a photo ID or Driver's License with your current address!

Main Library
515 Church Street
610-258-2917

Palmer Branch
1 Weller Place
610-258-7492

Upcoming Library Closures

Saturday, May 27 and Monday, May 29 (Memorial Day)

Tuesday, July 4 (Independence Day)

PROGRAMMING FOR ADULTS

PALS (Palmer Adult Library Support)

The Palmer Branch invites adults with developmental disabilities to be an integral part of our library community. We offer daily opportunities for learning, creativity, fun, and friendship. Activities include art/crafts, games and puzzles, and simple STEM activities. Visit the Palmer Branch anytime to participate in PALS!

Mah-Jongg for Beginners

Want to learn something new? Try mah-jongg! Learn the setup of the game, rules and basic strategy from Darrell Ann Murphy, a professional mah-jongg instructor. Once learned, this game is not only "brain food" but an ongoing joy for life! Class runs for eight weeks. Registration is required.

Friday afternoons beginning May 5 1:30 – 3:00

Getting Started with Genealogy

Monday, June 26 at 11:00am: Learn the basics of genealogy with professional genealogist Elyse Ross of Last Leaf Genealogy! Her presentation will give an overview of what genealogy is, why people do it, where you can create a family tree, and how to get started with research. Registration is not required but an RSVP is appreciated.

Monthly Book Groups for Adults

Forever Young Adult Book Group – meets the third Wednesday of the month at 6pm

Adult Book Group – meets the fourth Tuesday of the month at 6pm

Diverse Voices – meets virtually the fourth Thursday of the month at 7pm

TWEEN AND TEEN PROGRAMMING



Teen Writers Workshop

Ages 12 and up.
Meets the **first Saturday of the month @ 1pm.**
No registration required.

Disney+ Trivia

Ages 9-12
Saturday, July 8 @ 11am



CD Mosaics

Ages 13-17
Wednesday, July 12 @ 5:30pm

Chocolate Party

Ages 10-13
Tuesday, August 1 @ 1pm



CHILDRENS PROGRAMMING

Visit bit.ly/eastoncal for our full program schedule!

Join us for programs with community helpers!

- Lois Prytherch – local beekeeper
- Victoria Alercia – Licensed Professional Counselor
- Jenna Mauder - Agriculture and Food Program Manager at The Cooperage Project
- Cathy Bednar – local author

Storytimes

- Little Storytime – ages 0-2 with a caregiver
- Big Storytime – ages 3-5 with a caregiver
- Sensory Friendly Storytime – ages 2-6 with a caregiver
- Hora de Cuentos – ages 0-10 with a caregiver
- Bedtime Storytime – ages 2-7 with a caregiver



Book Discussions for Kids

Wednesday, May 17 at 4:00pm:
I Survived the San Francisco Earthquake

Wednesday, July 19 at 4:00pm:
What is the Story of the Wizard of Oz

Wednesday, August 2 at 11:00am:
I Survived the Eruption of Mount St. Helens





They count on your mammogram too.

To take care of others, you need to take care of your own health. Screening mammograms can find breast cancer in its earlier, most treatable stages. Make the time for your annual mammogram today - your loved ones will thank you tomorrow.

Schedule your mammogram | [LVHN.org/mammo](https://www.lvhn.org/mammo)





7 PALMER OFFICERS RECEIVE LETTERS OF RECOGNITION

Seven Palmer Township Police Officers were recognized by the Board of Supervisors during a Board of Supervisor’s Meeting on March 7, 2023.

The Officers are:

- Detective Sergeant Taylor** **Officer Border**
- Detective Lembach** **Officer Gallas**
- Detective Strong** **Officer Pagan**
- Investigator Santo**



These Officers were invited to attend an Awards Ceremony hosted by the New Jersey State Police, recently held on February 22, 2023. Each officer was honored for their involvement in stopping and investigating a Child Exploitation and Human Trafficking Case, which initially was started in New Jersey by the Warren County Prosecutor’s Office in August 2022.

This incident involved a Palmer Township resident transporting underaged girls from New Jersey to his home for sexual purposes. Palmer Officers intercepted this suspect with 3 juvenile females in his vehicle, on his way home. Suspect was arrested by Palmer Police and additionally charged in Warren County, NJ.

Each of our Officers were presented a Letter of Recognition by Colonel Patrick J. Callahan, Superintendent of the New Jersey State Police.

The Warren County Prosecutor’s Office and Palmer Township Police Department were awarded the Title of “New Jersey Crimes Against Children Task Force Affiliate of the Year,” for their “Commendable and outstanding actions.”

Congratulations to all involved.

Great TEAM WORK by BOTH Agencies!

INTRODUCING PALMER TOWNSHIP POLICE DEPARTMENT’S NEWEST K9 TEAM

Say hello to Officer Kyle Kromer’s new partner, K9 KENZO. Both were formally introduced to the Board of Supervisors and to our community during a Board of Supervisor’s Meeting. In January 2023, Officer Kromer travelled to High Drive K9, located in Belton, SC. Kromer and Kenzo spent 6 weeks training together in patrol and narcotics detection work. They graduated on February 24th, returning home to serve the Township. They bring the department’s K9 Unit to four strong. Each Team is assigned to one of our four Patrol Platoons, bringing to Palmer residents and businesses 24-hour K9 coverage. We welcome our newest officer, K9 Kenzo, to his new Kromer family and to ours. We wish them many years of Team success!



PALMER TOWNSHIP POLICE OBTAIN RE-ACCREDITATION

The Palmer Township Police Department successfully received Re-accreditation status on March 10, 2023.

The Pennsylvania Chiefs of Police Association introduced the Pennsylvania Law Enforcement Accreditation Program to the Commonwealth in July 2001. Since then, over 375 agencies have enrolled and 149 agencies currently maintain accredited status.

Accreditation is a progressive and time-proven way of helping institutions evaluate and improve their overall performance. The cornerstone of this strategy lies in the promulgation of standards containing a clear statement of professional objectives. Participating administrators then conduct a thorough analysis to determine how existing operations can be adapted to meet these objectives.

When the procedures are in place, a team of independent professionals is assigned to verify that all applicable standards have been successfully implemented. The process culminates with a decision by an authoritative body that the institution is worthy of accreditation.

This is our fourth re-accreditation.

The original Accreditation status was obtained July 16, 2014 from the Pennsylvania Law Enforcement Accreditation Commission.

The department was re-accredited in 2017, 2020 and again in 2023.





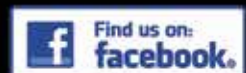
Todd
MILLER
Roofing, Siding and Seamless Gutters

*Trust The Name Your
Neighbors Trust Most*

ROOFING | SIDING | SEAMLESS GUTTERS

***Locally Owned Family Run Business
For Over 25 Years in the Bethlehem Township Area
Lifetime Local Resident***

We are dedicated to providing reliable, complete roofing, siding, and seamless gutters at the Guaranteed Best Price in the region. When you're ready to upgrade your home Todd Miller is the one to call at 610-972-8347.



2900 Charlotte Ave | Easton, PA 18045 | Phone: (610) 972-8347

Visit us at toddmillerroofing.com

CODES AND PERMITS

TEMPORARY POOLS

All temporary pools capable of holding more than 24 inches of water DO require a permit and inspection each year the pool is erected. The permit must be obtained before installation occurs. Use of the pool shall be prohibited until an inspection is obtained and approval has been issued by the Building Department.

Please be aware that pools with heights between 24 inches and 48 inches will require a permanent barrier in accordance with the 2015 International Residential Code/2015 International Pool & Spa Code. Also, overhead power lines, grade slopes and zoning setbacks will have an impact as to the allowable location of a pool. Call the Building Code Department with any questions at 610-253-7191.



GRASS/NOXIOUS VEGETATION AND SIDEWALK CLEARANCE

Spring is finally here and it is time to put down that snow shovel and start-up the lawn mower! Palmer's ordinances limit the height of grass to a maximum of 6-inches.

Also, please maintain the sidewalk clear of impeding tree branches, bushes and decorative vegetation by cutting such back so that the full width of the sidewalk, to a height of 7-feet, is accessible for the safety of pedestrians.



EARTH STEWARDS OF PALMER TOWNSHIP

During the past year the Earth Stewards of Palmer have drafted articles for Today's Palmer Newsletter that have outlined the importance of and adverse impact upon our local waterways and their respective drain basins by population and industrial growth factors within Palmer Township and adjacent communities, for our local drain basins extend beyond the geopolitical boundaries of Palmer. Through outreach and constant communication with our neighboring communities we can endeavor to reduce any adverse impact upon our residents and businesses resulting from additional creation of impervious surfaces and resultant stormwater flow from adjacent development.

Palmer Township has created an MS4 Citizens Advisory Committee to review and recommend what steps Palmer must take to ensure the health and safety of our community's stormwater environment. Various members of this committee have been longstanding advocates for the control of stormwater flow and preservation of greenways adjacent to our streams. In furtherance of preservation of our waterways "Wildlands Conservancy" has planted native plants along the Bushkill Stream within the riparian area to preserve the shorelines of the stream. The "Bushkill Stream Conservancy" has advocated the removal of various dams along the Bushkill and has successfully sought funds to remove these dams. These actions have enhanced the streams habitat for fish, deer, migratory creatures and birds.

There remain several major adverse impacts upon our streams: Roadside litter, runoff chemicals, oils and solvents all of which ultimately flow downstream and adversely impact the quality of downstream water and its habitability and to sustain both the need for fresh water for human and nature's consumption. So what has to be the action plan to preserve our waterways?

Prevent litter and chemicals from entering our waterways.

How? By not throwing everything imaginable out of your car, truck, SUV window. Carry the item(s) to be discarded to a readily available trash can at home, gas station, car wash, Township Park with their multitude of trash cans. Once at a trash can ensure that all of your item are placed inside the can and not on the ground.

Reduce the amount of water that runs off of your property via usage of downspout water barrels and use of the collected water for your garden, shrubs, plantings.

To help clean the water runoff, plant native shrubs, placement of stones and other means of slowing the rate of dissipated water while simultaneously removing hazardous materials/chemicals from the runoff.

You can adopt a storm drain curbside to your residence/business and remove any and all litter from entering the stormwater system!

Past Today's Palmer Newsletter articles have asked the question, "IF NOT YOU, THEN WHO?" This question is raised to ask each of you to ensure that Palmer Township remains a desirable community within which to live, work and play. How? All actions begin at home - remove all litter strewn onto your property by others, for litter begets more litter. Ensure that the lid is closed on your trash and recycling bins curbside. Reduce the amount of chemicals and detergents used to feed your lawn, wash your vehicles, or the exterior of your home/business.

We all live, work and play within Palmer so let's keep our community's environment one that enhances our lives not only today but well into the future of your children and grandchildren!

If you want to join the Earth Stewards of Palmer in their efforts to improve the quality of life and enhancement of your environment, email: earthstewardsofpalmer@gmail.com

IF NOT YOU, THEN WHO!!

Charles Chrin Community Center News



4100 Green Pond Road Palmer, PA 18045 • 610-252-2098 • www.palmercommunitycenter.org

Community Center Closings:

Memorial Day, Monday May 29, 2023 & 4th of July, Monday July 4, 2023

UPCOMING EVENTS & PROGRAMS:

- **SENIORS PINOCHLE: Pinochle Players Needed:** Tuesday Afternoons – 12:30 – 4:00pm. Join them as they play 3, 4, 5 or even 6 handed pinochle! Don't worry if it's been awhile, or if you only ever played one way. They will teach you. Come share the fun and laughter. It's a great way to spend an afternoon. Any questions, call Marj at 610-252-7964 or email to paulm1@rcn.com
- **Ambassador Club:** Meets every 3rd Monday of the month at 1:00pm (No Meetings in July, August, or December)
- **Greater Lehigh Valley Chapter of the American Sewing Guild** 2nd Thursday of Each Month (No Meeting July and August) 10:00am-1:00pm
- **Penn Rose Quilt Club:** Meets 1st Wednesday of Each Month, 10:00am
- **URW:** Meets third Tuesday of each month, 9:00am, no May, September or December meetings
- **Dream...Believe...Dance Recital:** Sunday May 21st
- **Blood Drive** - Friday, June 2nd - 12:00pm – 7:00pm
- **Great Dane Dog Show** – Friday August 4th – Saturday August 5th



**OPEN GYM BASED ON
AVAILABILITY, PLEASE CALL.
\$5.00 WALK-IN FEE**



Birthday Parties

Join us for your child's birthday party. We provide two trained party coordinators who are ready to get kids moving and excited. We take care of set up and clean up to ensure a stress-free event. We provide pizza, juice, all paper products. ***Birthday Cake is not provided.** Children will have the opportunity to play on different gymnastics equipment; including bars, beam, trampoline and the air trak, along with games and the parachute! Or you may have a child that is into sports, we can also incorporate the sports theme into your child's special day! After one hour of play time the party coordinators will escort the children to the food area, they will serve the children pizza and juice. Don't worry about clean up the coordinators take care of that also. In addition to bagging all the birthday gifts to take home! **Please contact Brenda at 610-252-2098 for more information.**

PRICING

PARTY HOURS
All Dates & Times vary based upon availability.

- Basic-up to 20 Children..... \$275.00/Resident
\$325.00/Non-Resident
- Each additional child \$5.00
- Additional Pizza..... \$15.00 each
- Weekday birthday party \$250.00 (Monday-Friday—
Daytime parties based upon availability)



Green Pond Nursery, Inc.
610-252-5521
5301 Green Pond Road
Easton, PA 18045
Mulch • Soil • Deco Stone
Delivery Available

Phoenix Physical Therapy *Recover. Recharge. Rise.*

Call today to request an appointment or schedule online 24/7 at phoenixphysicaltherapy.com/easton

Barrie Jo Wambold, PT, DPT, OCS, MTC
Clinic Director, Easton
Phoenix Physical Therapy
bwambold@chc-pt.com

Easton
3071 William Penn Highway
Easton, PA, 18045
(610) 252.6967



Premier is here to assist you with all your Senior Care needs

FREE SERVICE
INDEPENDENT LIVING • ASSISTED LIVING
MEMORY CARE • SKILLED CARE • HOME CARE

Karen Onushco
Senior Advisor
484-764-0610





Learn to play... or Improve your Current Game

Summer Pickleball Lessons are Available at Mill Race Park

Beginner Classes - Wednesday Evenings

(includes: First Hour Instruction & Second Hour Instructional Game Play)

Summer Session 1: June 7th - June 28th (5:30-7:30pm)

Summer Session 2: July 5th - July 26th (6:00-8:00pm)

Summer Session 3: August 2nd - August 23rd (6:00-8:00pm)

Summer Session 4: August 30th - September 20th (5:30-7:30pm)

Intermediate Classes - Monday Mornings

Summer Session 1: June 5th - June 26th (8:00-10:00am)

Summer Session 2: July 3rd - July 24th (8:00-10:00am)

Summer Session 3: July 31st - August 21st (8:00-10:00am)

Summer Session 4: August 28th - September 25th (8:30-10:30am)

Minimum of 4 people to run session but will take up to 8 people.....

Register early by calling the Charles Chrin Community Center at 610-252-2098.

Payment is due the first day of the session by cash or check.

\$80 (per 4 week session)



Dustin Greenhill, MD
Nicholas Grimm, DO

The Ortho care you TRUST...

for kids

When it comes to your child, you only want the best for them. From simple to complex orthopedic issues, turn to the team you TRUST. The region's largest team of pediatric orthopedic surgeons is fellowship-trained to diagnose, treat and manage pediatric orthopedic conditions, from fractures and sports injuries to hip dysplasia, club foot, limb lengthening and scoliosis. When surgery is needed, the St. Luke's team is skilled in the latest techniques and technology to care for infants, children and adolescents. Your child will be able to recover in our inpatient pediatric unit or pediatric intensive care unit if needed.

Our pediatric orthopedists work closely with your child's pediatrician, sports medicine providers and other pediatric specialists. Our collaborative approach enables us to create comprehensive and customized treatment plans based on your child's specific needs and condition... all right here at St. Luke's.

**The orthopedic care you trust for kids.
Now more than ever.**





Ryan Stocker
Licensed Insurance Agent

Choosing Insurance is Hard. I Can Help!

Call Ryan for a **FREE Quote Today!**

(610) 216-0787

health
markets®



Email: RStocker@healthmarkets.com Personal website: www.healthmarkets.com/rstocker

HealthMarkets Insurance Agency - Health | Medicare | Life | Supplemental

The Ashton Family - Worthy of Your Trust for Five Generations



• Est'd 1847 •
Ashton
FUNERAL HOME, Inc.

1337 Northampton St., Easton, Pennsylvania
610-253-4678 | www.AshtonFuneralHome.com

R. Kline Ashton, Jr., *Supervisor*
Debra Jo Ashton-Chase, *Funeral Director* | W. Scott Ashton, *Funeral Director*



Create Beautiful
& Distinctive Landscapes
in Your Back Yard!

AtlanticRIDGE
LANDSCAPE DESIGN - BUILD

1511 Sullivan Trail • Easton, PA 18040
610-252-8833

Come Visit Us at www.Atlanticridge.com

PA Home Improvement Contractor #000767



CHRIN COMMERCE CENTRE

Building bridges between business, industry and our community

Acreage available for industrial, office and retail development • Nearby access to Route 22, I-78 and I-80



ROUTE 33 CHARLES CHRIN INTERCHANGE
IMAGE COURTESY OF MCTISH, KLOUPEL AND ASSOCIATES

- Amazon
- Sheetz
- Martin Guitar
- Lulus
- Mondelez
- Porsche
- UPS
- Scholastic

www.ChrinCommerceCentre.com • 610.253.9665



2023 PALMER POOL

***The pool opens Memorial Day Weekend,
May 27th, 28th, & 29th, 2023!***

- **New Season Passes** must be purchased at the Charles Chrin Community Center of Palmer Township, 4100 Green Pond Road, Palmer, PA 18045.
- **Season Pass Renewals** may be processed through your annual invoice mailer or in person at the community center. (Replacement key tags are \$5.00, if needed)
- **Day Passes** can be purchased at the pool. Proof of residency must be provided.

- * **For questions, please email** pool@palmertwp.com
- * **Pool Location:** 3001 Farmersville Road Palmer, PA 18045
- * **Pool Hours:** 12:00pm – 7:00pm
(Weather permitting)
- * **Pool phone** (*only accessible during summer*): 610-258-4576

MEMBERSHIP RATES

Family Membership

- * Includes 2 adults & 4 children
- * \$20 for each additional child

Palmer Resident: \$275.00

Individual Membership

- * Must be 16 or older

Palmer Resident: \$150.00

Senior (62+): Free for Palmer Residents – Must sign up at the Charles Chrin Community Center

Children 2 & under are FREE
Adults are 18 and older

20% Military Discount
(Retired/Active) – Must Show ID

DAILY ADMISSION PRICES

Adult

Palmer Residents Only: \$15.00

Child (3-17 years old): \$10.00

Children ages 3-12 must be accompanied by a Parent or Guardian -Palmer Residents Only

*****Proof of residency must be provided for Day Passes*****

Charles Chrin Community Center Fitness Class Schedule

Sunday	Monday	Tuesday	Wednesday	Thursday	Friday	Saturday
		Yoga 9:30-10:20am Becky		Yoga 9:30-10:20am Becky		
	Zumba 10:45-11:30am August	Zumba Toning 10:45-11:30am August	Zumba 10:45-11:30am August	Bootcamp 10:45-11:30am August	Zumba 10:45-11:30am August	
<i>Silver Fitness Classes!</i> ➔ <i>See full schedule for more details.</i>	Zumba Gold 1:00-1:45pm August <i>Silver Class</i>	Silver Core Stretch 1:00-1:45pm August <i>Silver Class</i>	Zumba Gold Toning 1:00-1:45pm August <i>Silver Class</i>	Silver Bootcamp 1:00-1:45pm August <i>Silver Class</i>	Silver Yoga 1:00-1:45pm Becky <i>Silver Class</i>	
	Zumba 7:00-7:50pm Lisa		Zumba 6:00-6:50pm Lisa			
						

FIT PASS: \$40.00/month

FP includes unlimited classes & use of the fitness center

FIT CARD: 10 Classes/\$50.00

Fit Card does not expire

SILVER PASS: \$20/month

SP includes unlimited silver classes & use of the fitness center.

WALK-INS: \$5.00/class

SILVER WALK-INS: \$3.00/class

•NO REGISTRATION FEES

•NO YEARLY CONTRACT

•MONTH-TO-MONTH PAYMENT

We also accept Silver Sneakers, Silver & Fit, Active & Fit, Renew & Fit, Healthways, Health Plan Partners with qualifying insurance. Contact your insurance provider to see if you are eligible.



*Watch for upcoming special events throughout the year!

"Like" us on Facebook to stay connected with our up to date information

including cancellations and class changes!

4100 Green Pond Rd. Palmer, PA. 18045 - www.palmercommunitycenter.org - 610-252-2098



Silver Fitness Schedule

Charles Chrin Community Center of Palmer Township, 4100 Green Pond Rd., Palmer, PA 18045



Monday	1:00pm-1:45pm	Zumba Gold August
Tuesday	1:00pm-1:45pm	Silver Core Stretch August
Wednesday	1:00pm-1:45pm	Zumba Gold Toning August
Thursday	1:00pm-1:45pm	Silver Bootcamp August
Friday	1:00pm-1:45pm	Silver Yoga Becky

Zumba Gold – Latin-inspired, dance fitness program designed for the active older adult, beginner participant, pregnant women, those who need modifications, arthritis sufferers, and those recovering from injury. This is a fun, feel-good, party-like class.

Silver Bootcamp – This is a great way to increase strength, flexibility, balance & coordination. Pilates is regarded as an ideal exercise regimen for people in or over their 50's due to low-impact exercise. Benefits are improved posture, stamina, and strength.

Zumba Gold Toning – “Muscle Toning for the Young at Heart”, combines the cardio element of Zumba Gold with strength training techniques.

Silver Core Stretch – A full body stretch using movements that flow smoothly to increase flexibility, decrease muscle tension, develop core strength, and improve muscular balance.

Silver Yoga – This class will begin with a short breath practice and then work up to a mindful flow ending in a relaxing shivasana. Participants will explore getting into and out of different yoga postures and how to make adjustments when necessary. This class will use props, explore variations, and work on balance while increasing both strength and flexibility. No prior yoga experience necessary - all levels welcome! Come explore the beautiful blend of breath and movement to open up the body and enhance mobility.

OUR SILVER PASS IS \$20/MONTH

(includes access to the Fitness Center and all Silver Fitness Classes only)

Drop-in Fee is \$3/class

**Check eligibility through your insurance for Silver & Fit, Active & Fit, Renew Active, Silver Sneakers, or Healthways.*

We also offer **FREE** quarterly social events!

You can find more information at www.palmercommunitycenter.org or call 610-252-2098

Charles Chrin Community Center News



DREAM . . . BELIEVE . . . DANCE

Of Palmer Township Would Like To Welcome You!

With over 30 years of teaching experience, we take pride in our program and dancers. A variety of dance and tumble classes are available for ages 3 and up. We offer both recreational dance and competition classes.

SUMMER SESSION 1

6 WEEKS

Registration opens
5/1/23.

6/19/23- 8/4/23

No class 7/3 through 7/7

TUITION RATES

Cost per 6-week session

30 minutes.....	\$84.00
45 minutes.....	\$96.00
60 minutes.....	\$108.00
75 minutes.....	\$120.00
90 minutes.....	\$150.00
Unlimited.....	\$195.00

Our all-inclusive rate entitles dancers to take any or all classes for their age group/level. No additional discounts given. Private classes/workshops/special events excluded.

Adults who have a child enrolled in class will receive a discount for their adult class.

We accept cash, check, ACH

*If you have any questions, please email Miss Justine at
MissJustine@dreambelievedance.com*

Instructor approval required for all classes

PRIVATE CLASSES AVAILABLE

30 min.....\$10.00 plus Instructor fee
45 min.....\$15.00 plus Instructor fee

Please see Miss Justine for each instructor's fees.



PLEASE FOLLOW US ON FACEBOOK AT:

www.facebook.com/missjustinesdanceclasses

[ig @dreambelievedanceofpalmer](https://www.instagram.com/dreambelievedanceofpalmer)

please register at: dancestudiopro.com/online/dbd

SUMMER DANCE SCHEDULE 2023

Monday	Tuesday	Wednesday	Thursday	Saturday
	PRESCHOOL BALLET, TAP AND TUMBLE Level 1 5:15-6:15 Ages 3-5	TAP DANCE BEG/INTERMEDIATE 5:00-5:30 Ages 8 and up Miss Kayla	ACRO/GYMNASTICS 5:00-6:00 Ages 6-18 Miss Kayla/Miss Justine	
PERFORMANCE TEAM	TEEN COMP **CHOREOGRAPHY 6:20-7:20	HIP HOP BEGINNER 5:30-6 Ages 6 and up Miss Kayla	KIDS LYRICAL BALLET* 6:10 - 6:55 AGES 5-10 Miss Justine	
	JAZZ/MUSICAL** THEATRE Level 2-3 7:30-8:15 Ages 10 and up Miss Justine	BALLET FOR TECHNIQUE* ** BEG/INTERMEDIATE 6:10-7:10 Ages 8 and up Miss Kayla	JAZZ* 7:00 -7:45 AGES 5-10 Miss Justine	
		LEAPS, TURN AND* **TRICKS (TECHNIQUE) 7:15- 8:00 Ages 8 and up Miss Kayla		

DREAM... BELIEVE... DANCE



New!!!

Dream...Believe...Dance!!! Performance team

DBD Performance Teams are geared towards children aged 3 and up! These teams are for children who love to perform and have a lot of fun but don't want to compete.

DBD will have 3-4 local performances, with options to do more if you choose.

Teams will be based on age and experience.

Performance team will be practicing bi-weekly on Monday nights beginning June 2023.

The fee is \$20 per class or \$15 if currently enrolled in other classes with DBD.

Currently Scheduled performances:

August 17th: Palmer Days @CCCC

December 9: Tree Lighting Ceremony @CCCC

If interested contact MissJustine@dreambelievedance.com for more information

**** We will also be accepting new competition team members in June.
Please see Miss Justine if interested.*



Who's 2023
Who
IN BUSINESS
Lehigh Valley

The PT care you TRUST.

PHYSICAL THERAPY
AT StLukes

3213 Nazareth Road
PALMER
484-822-5300

StLukesPT.com

FOSTER LOVE - Become a Foster Parent

KidsPeace

www.fostercare.com/bethlehem

There is no place like home...
make it a place you love

610.258.7206
Open Mon.-Fri. 9am-5pm Sat. 9am-3pm | 3401 Northwood Ave., Easton

Stokes
Electrical Lighting Center

July 19th and 20th, 2023
9:30 AM to 1:30PM
Ages 6-12
\$120.00



Summer Pop Dance Camp



Register at:

<https://dancestudio-pro.com/online/dbd>

Registration opens May 1.

Dream... Believe... Dance of
Palmer Township
4100 GreenPond Rd
Easton, PA 18045



Dancers will learn jazz, hip hop, lyrical ballet and some basic acro and tumbling for dance. They will create their own costumes to make their own pop video.



Princess Dance camp

by **DREAM ... BELIEVE ... DANCE!!!**

Our princesses in training will enjoy 2 days of all things Fairy Tale and Princess. The camp includes a princess themed craft each day as well as dance, tumble, and creative movement. Dancers will learn a routine that will be performed for our visiting princess. Our princesses are encouraged to bring their favorite princess outfit on Thursday to meet the princess and take photos with her.



Our Princess by The professional singing princess
<https://www.professionalsingingprincess.com/>

**July 12th and
13th, 2023**

**9:30 AM to
1:00PM**

2-day camp \$110

Princess Ariel will meet our princesses July 13th at noon, to give them their final princess lesson and take photos with them and their families.

**Registration
opens. May 1st.**

Register at:

**[https://
dancestudio-pro.
com/online/dbd](https://dancestudio-pro.com/online/dbd)**

**Dream....Believe...Dance of
Palmer Township
4100 Green Pond Rd.
Palmer, PA 18045**

**[https://www.facebook.com/
MissJustinesDanceClasses](https://www.facebook.com/MissJustinesDanceClasses)**

Amazing Athletes® Educational Sports Programs

At Amazing Athletes, we empower children by using sports as a catalyst to engage their inner strengths and abilities so they can confidently pursue an active lifestyle through each stage of development.

Amazing Athletes is the premier multi-sport program for children ages 2-6 years old! We teach the basic fundamentals of 10 different sports in a fun, non-competitive environment where every kid can learn at their own pace! Text 908-291-2307 or email gcarmona@amazingathletes.com to set up a free trial class at any time! Classes running year round, see website for exact days and time slots for your age group!

To register, go to the following website: www.amazingathletes.com/lehighvalley

Click on classes and then scroll down to find your Charles Chrin day and time!





FUN PLACE TO PLAY AND BE SOCIAL!

Tumble Time!
w/ Amazing Athletes

- Tumble Time is held weekly at Charles Chrin Community Center every Monday and Thursday. Time slots are 9:30am to 10:15am and 10:30am to 11:15am. NO SHOES on the mats.
- Cost is \$10.00 cash, paid at the front desk each week, or you can pay \$90.00 for a 10 visit punch card! Unstructured class where kids can roam free and explore, play and meet friends!
- Soft play, trampoline, balance beams, toys, balls, music and bubbles every class!
- Sports equipment for parents and children to play with at their own leisure (soccer balls/nets, footballs and basketballs)
- Children up to age 5 are permitted, although most equipment is best suited for 3.5 and under. Older children we recommend join our Amazing Athletes or Soccer Stars program!

2nd ANNUAL PALMER TOWNSHIP TRICK OR TREAT TRAIL!



The Charles Chrin Community Center will host an evening of thrills and adventure for the children of Palmer Township ages 8 and under!

DATE: Saturday, October 21, 2023

TIME: 4:30pm-6:30pm

Local businesses, organizations and community members interested in joining us with a decorated booth can contact us before September 21st at palmercommunitycenter@rcn.com

This is a community-wide, family-friendly event so we hope you will join us!

The Charles Chrin Community Center
Of Palmer Township



SignatureConcreteDesign.com

**PATIO INSTALLATION • STAMPED CONCRETE • LANDSCAPE DESIGN
DECK DESIGN AND INSTALLATION**

Visit our showroom: 2430 Butler Street, Easton PA • Hours: M-F 9am-5pm or by appointment

610-923-5073



signatureconcretedesign

signaturelandscapedesign

\$400 OFF AC or Heating System Installation

EDWIN STIPE, INC. • 877-337-8473
Not to be combined with other discounts or offers. Offer expires 11-31-23

\$100 OFF Any Hot Water Heater Purchase & Installation

EDWIN STIPE, INC. • 877-337-8473
Not to be combined with other discounts or offers. Offer expires 12-31-23

\$50 OFF plumbing good on any service over \$250.00

EDWIN STIPE, INC. • 877-337-8473
Not to be combined with other discounts or offers. Offer expires 12-31-23



Celebrating 129 Years!

EDWIN STIPE, INC.

Plumbing Heating Air Conditioning

The Experience You Need

The Integrity You Deserve

610-258-0201

www.EdwinStipe.com

Free Estimates On New HVAC Systems



**12 MONTHS
NO INTEREST
FINANCING
AVAILABLE**

Call for details. With approved credit.



Master Plumber
PA #031 / NJ#06054
Home Improvement
PA/D13611 / NJ13VH0060090



SURE-FIX SHOWROOM
www.surefixshowroom.com
NOW OPEN
2015 FREEMANSBURG AVE.
IN EASTON, PA 18042
610-253-3033
Open Monday - Friday 9-5
Saturday 8-12

- KITCHENS
- BATHROOMS
- BASEMENTS
- DECKS
- CARPET & FLOORING
- CONCRETE
- PAINT and More...



SURE-FIX REMODELING
CONTACT HENRY TODAY!
HENRYROUHANA@HOTMAIL.COM
Call or Text 610-392-0990
SUREFIXREMODELING.NET
PA 043616 - NJ 13VH06930200



FREE INSTALLATION
ON STAIN CARPET UP TO 500 SQFT

25% DISCOUNT ON ALL CABINETRY UNTIL 5/31/23



Palmer Township
3 Weller Place
Palmer, PA 18045



MAY 2023

ECRWSS EDDM

Postal Customer

Presort Standard
U.S. Postage
PAID
Permit No. 550
Lehigh Valley, PA

hometownpress

This Community Newsletter is produced
for Palmer Township by Hometown Press
(215) 257-1500 • All rights reserved®



To Place An Ad Call Denise Morano At Hometown Press • 610-346-6126 • denisefhttp@yahoo.com



*Let's Get
You Home!*

TERI DANAHEY
Sales Associate



BERKSHIRE HATHAWAY
HomeServices
Fox & Roach, REALTORS®



Licensed in PA
and NJ

3465 Nazareth Road, Easton, PA 18040 • Office: 610-258-0808 • Text/Direct: 908-447-9416



Your vision, Your event, Your way, Our place



RIVERVIEW
Country Club

1 Riverview Place
Easton, Pennsylvania
610.559.9700

riverviewcountryclub.com



REAGLE
INSURANCE

REASONABLE RATES AND GREAT SERVICE

*Thank you to our valued clients.
We appreciate your business.*

**AUTO • BUSINESS
PERSONAL • LIFE INSURANCE**



610-258-7216 • REAGLEINS.COM
2912 WILLIAM PENN HIGHWAY • EASTON