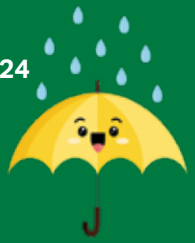


Today's Palmer

NORTHAMPTON COUNTY, PENNSYLVANIA

MAY 2024



IN THIS ISSUE

Township Directory.....	3
Staff Highlights - New Faces ...	3-4
Throughout our Lifetime	4-5
Codes and Permits.....	7
Library News.....	8-9
Palmer Parks and Recreation ...	11
Code and Zoning	11
Suburban EMS.....	12
Attention History Buffs.....	12
Palmer Fire Department	13
Trash and Recycling Guide.....	15
Pennsylvania Storm Water Authority.....	16
MS4 News	18
BIP	18
State Rep. Joe Emrick	18
Tree City USA	19
Earth Stewards of Palmer	20
Charles Chrin Community Center News.....	21-30

PALMER POOL SUMMER PASSES

Palmer Pool season passes are available at the Charles Chrin Community Center, Opening weekend Saturday May 25th, Sunday May 26th, & Monday May 27th!



Mark Your Calendars!

MOVIES IN THE PARK AT DUSK:

**Wednesday
August 14th, 2024**

Save The Date!!!

PALMER COMMUNITY WEEKEND



WEDNESDAY AUG 14TH
MOVIES IN THE PARK AT DUSK

THURSDAY AUG 15TH
6-10PM

FRIDAY AUG 16TH
6-MIDNIGHT

SATURDAY AUG 17TH
5-MIDNIGHT

SUNDAY AUG 18TH
3-9PM



VISIT OUR WEBSITE

www.palmertwp.com

3 Weller Place, Palmer, PA 18045 • T 610-253-7191 • F 610-253-9957

COOKE

INSURANCE AGENCY

Family Owned For 49 Years
Personalized and Friendly Service



- AUTO • LIFE
- HOME • BUSINESS

Please Call Us For A Free Quote

606 Stones Crossing Road, Easton, PA 18045
Located in Palmer Township, just 1.5 miles from Route 33

610-258-9675
www.CookelInsuranceAgency.com

• PARTIES • SCHOOLS • CORPORATE • ASSEMBLIES • SPECIAL EVENTS • GRAND OPENINGS

BALLOONS the clown

MAGIC COMEDY • AUDIENCE PARTICIPATION

BOOK NOW!

1977 Ringling Brothers Clown College Graduate

610-253-2835

NEW THIS YEAR!

FOAM PARTIES & MORE

IN YOUR YARD!

Book Early & Secure Your Reservation **FOAM# 610-253-2835**

John G. Sales & Service

2906 Nazareth Rd
Easton PA 18045

610.258.1142



- Oil Changes ■ Lube ■ Brakes ■ Diagnostic Services ■ Exhausts
- Electrical Repair ■ Emissions Testing ■ General Maintenance
- Tires ■ Batteries ■ PA Inspections

Serving the Community Since 1977

ADDITIONAL SERVICES:

- Full Service Gas, VALERO, an American Company
- Buying and Selling Used Cars



Let's get started today!



Crafted
LANDSCAPES &
EXPERT TREE CARE

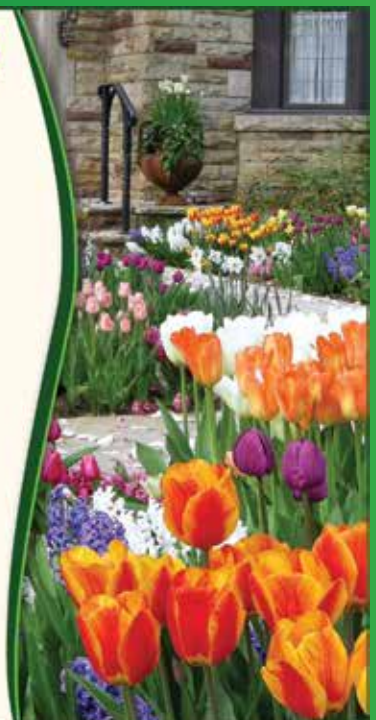
Expert Tree Care

- Corrective pruning for aesthetics & structural integrity
- Tree removal
- Storm damage cleanup
- Preserving the natural beauty of trees & landscape
- Crane removal service
- Stump grinding

Landscape & Hardscape Design & Installation

- Brick paver patios
- Boulder walls & steps
- Natural fieldstone & block retaining walls
- Landscape lighting
- Mulch & decorative stone

CraftedLandscaping.com
610-533-9285 • Easton, PA





TOWNSHIP DIRECTORY

BOARD OF SUPERVISORS:

Michael Brett – Chair
Joseph Armato – Vice-Chair
Jeffrey A. Young
K. Michael Mitchell
Charles E. Bellis III

Palmer Township Palmer Municipal Building

3 Weller Place, Palmer, PA 18045
T 610-253-7191
F 610-253-9957
www.palmertwp.com

Editor:

Brenda Lazarus
email: blazarus@palmertwp.com

Contributions:

Fax or mail newsletter
contributions to:
Today's Palmer
Palmer Municipal Building
3 Weller Place
Palmer, PA 18045-1975
Phone: 610-253-7191
Fax: 610-253-9957
e-mail: blazarus@palmertwp.com

For information about advertising in Today's Palmer, please call

Denise Morano at 215-813-8361 or
email DeniseOfHTP@yahoo.com



HOLIDAY MUNICIPAL BUILDING CLOSINGS:

Memorial Day
Monday May 27, 2024

June 19th
Wednesday, June 19, 2024

4th of July
Thursday, July 4th, 2024

STAFF HIGHLIGHTS – NEW FACES

Palmer Township is proud to have a highly educated and dedicated staff to serve the needs of our community. To better serve the residents and businesses, the Township has hired new talent in several departments. We would like to highlight and welcome a few of our recent additions to the team.

Message from Tom Adams, PE (Retiring Public Services Director)

It has been my pleasure and privilege to work with and alongside Palmer Township staff and elected officials for the past 20 years (plus during a summer college internship in 1979). I consider myself quite fortunate that I lived in Palmer and it was like the Wonder Years for me growing up in the community surrounded by family, friends, and neighbors. Likewise, it was a pleasure progressing through the PTAA Youth Sport Programs, Palmer Elementary School, Easton Area Junior and Senior High Schools and onto Penn State. My hope is that all existing and new Township residents will have the same and more opportunities.



Thank you to former co-workers: Public Service Directors Ted Sales and Bill Remaly; surveyor Kermit Finkbeiner; as well as former Administrative Assistant Diane Grube and current Administrative Assistant Ashley Catucci, for their assistance and support over the years. I would also like to personally express my gratitude to the various volunteer staffed commissions and boards, past and present Supervisors, and former Township Managers Bob Anckaitis, Chris Christman and existing Township Manager Bob Williams and Assistant Township Manager Brenda DeGerolamo.

A sincere and grateful thanks to all former and present US Military Service Members and First Responders for their sacrifices and who protect us while placing themselves in harm's way.

I believe the past and present Township Managers and Supervisors have done a wonderful job providing first class Police, Fire, Public Works, Administrative, and Recreational Services for the residents. So in conclusion I cannot think of a better place in Pennsylvania to live, work and play. Palmer Township will always remain a special place in my family's heart and we are proud that my wife's family (Mancino Brothers) built over 350 homes and my family (Adams Brothers) built four homes plus numerous additions within Palmer Township over the years.

Best wishes to the new Public Services Director, Phil Godbout.

Lastly a special thanks to my lovely and supportive and patient wife Mary Kathryn (who I met in Kindergarten Class at Palmer Elementary School), our son Robert, and our respective families. *Aloha!*

Phillip Godbout, EIT – Director of Public Services

Phillip Godbout holds the position of Director of Public Services for the Department of Public Services. In this role, Phillip develops and oversees all municipal projects in the Township. These projects range from the maintenance and upgrading of public facilities to the long-term development of recreation, transportation, environmental, and public safety infrastructure. He brings with him over twelve years of experience in engineering, most recently as a Project Engineer for the City of Bethlehem. Phillip's goal is to ensure that Palmer's parks, facilities, and public right of ways are safe, functional, and continually improving.



Phillip is certified as an EIT with ten years of experience in structural design, energy efficiency engineering, and construction project management. He earned his BS in Civil Engineering from Carnegie Mellon University in 2008, after graduating from Moravian Academy in 2004. His interests extend into innovative fields like UAV piloting and drone racing. As a PSIA certified

Continued on page 4

ski instructor at nearby Blue Mountain, Phillip is committed to education and community engagement. Phillip serves Palmer Township as a multifaceted professional dedicated to the continuous improvement of Palmer today and for generations to come.

Paige Strasko, CSI – Environmental Administrator/MS4/Tree Coordinator



Paige Strasko is the Environmental Administrator, Municipal Separate Storm Sewer System (MS4) Coordinator, and Tree Coordinator for the Department of Public Services. She manages the MS4 program which includes annual reporting, stormwater facility inspections, public education, public involvement, and enforcement of Palmer's MS4 permit to remain in compliance with the MS4 program. Paige also works closely with Township committees including the Shade Tree Commission, Environmental Steering Committee, and the newly formed Stormwater Authority, taking meeting minutes, forming agendas, and assisting committees' to complete goals and plan events including Earth Day and Arbor Day. Paige also coordinates any tree calls from residents, tree removals and plantings, and submits annual Tree City Program applications.

Paige was born and raised in Palmer, graduated from Easton Area High School in 2017, then earned her BS in Ecology and Environmental Science in 2020 from University of Maine. She has previous field experience in water sampling and is currently a Certified Stormwater Inspector trained in Federal, State, and Local regulations for stormwater management during construction. In her spare time, Paige's hobbies include painting, drawing, and reading. She also enjoys writing poetry and has been published in multiple student anthologies. Paige likes spending time with her cat Peaches and enjoys being involved in musical theatre both onstage and behind the scenes.

Craig Beavers, CFM, CZO – Assistant Director of Planning

Craig Beavers serves as the Assistant Director of Planning for the Department of Planning and Community Development. Craig manages the land development process for the Township, including processing development applications, reviewing projects for compliance with local and state legislation and community goals, and overseeing construction projects. He also provides staff support to the Planning Commission and Board of Supervisors, helping to implement the 2018 Comprehensive Plan for the community. Formerly, Craig served as the Assistant City Planner and Sustainability Coordinator for the City of Scranton, managing long-range planning initiatives in the fields of climate action, active transportation initiatives, and sustainable land use.

Craig received his B.A. in Arts Administration and a minor in Business from Marywood University in Scranton, Pennsylvania, and is currently pursuing a Master of Urban and Regional Planning from the University of Florida. He holds professional certification as a Certified Floodplain Manager and Certified Zoning Officer, and he volunteers as the Chairman of the Lehigh Valley Section of the American Planning Association. Outside of planning, Craig performs in a variety of musical ensembles on double bass, tuba, and voice. He has toured professionally across the country with jazz ensembles, choir groups, and orchestras.



THROUGHOUT OUR LIFETIME.....

Throughout our lifetime we encounter many role models. In each stage of our life, as we grow, our role models change. As a child it might have been Spider-Man or Wonder Woman as they fight crime and save us from the bad guys. As a teen, it might have been a particular band or movie star for their creativity or rebellion against societal norms. In our early twenties our view of the world is broadened, and we connect to world issues. Our role models may then become Michelle Obama, Greta Thunberg, Martin Luther King Jr., Stephen Hawking etc.

Then you reach a place in your life where you realize your role models might be your neighbor, your co-worker, or your friend. They are the people around you that quietly give their time and energy to your community. They do it like others we have mentioned because they care, but they don't get the same type of recognition.

I would like to take the time to recognize a few of these role models. I wouldn't be surprised if you know one or more of these people, as they have done and are still doing so much for the residents of Palmer Township.

Bob Walker

Bob Walker most recently served on the Palmer Township Planning Commission. He was a Commission member for 7 years. This is where I met Bob. What I noticed most about his style as a commission member was that he was quiet. He was quiet because he was listening. You knew that because when he did speak out, he was asking the important questions, or bringing up the very important points that made "the difference" for the residents of Palmer Township.

Bob wasn't just involved in community planning. Bob spent many years working with the kids and for the kids of Palmer Township. Bob coached baseball, served as a Palmer team representative to the NORCO legion Baseball League, umpired in Palmer Leagues, was one of the founders of the Palmer Soccer Program, served on the PTAA Board of Directors, and was awarded a lifetime PTAA membership. Bob also served several terms on the Palmer Township Recreation Board where he held the positions of Treasurer and President throughout his terms.

Bob has spent 35 years serving Palmer Township in one form or another. If you think he would take some time to relax now, you would be incorrect. Bob still has his position of Chairman of the Easton Suburban Water Authority which he became a member of in 2011.

Bob Lammi

I also met Bob Lammi through the Palmer Township Planning Commission. Because Bob had lived in Palmer since 1972, he had both technical knowledge as well as history. Palmer is his home, and he didn't just talk the talk. Bob became Assistant Chief and President of the Fireman's Relief Association.

As the Firehouse became his second home, so did the Palmer Planning Commission. In 1976 Chairman of the Board of Supervisors, Bob Daws invited him to join the Planning Commission, where he served as Chairman from 1983-1988.

Are you seeing a pattern here yet? Bob, from 1976 through 2023 spent his time between the Planning Commission and Board of Supervisors. Much of the time was spent as a leader, either Chairman or Vice-Chairman. As a leader he sculpted visions of what Palmer Township could be into reality.

In 2022, The Miracle League of Northampton County (www.miracleleagueofnc.org) celebrated its 10th anniversary. The creation of "The Robert Lammi Founders Award" was introduced in recognition of Bob's contribution to the league. On the award, it states: "This award is presented annually to recognize outstanding contribution to The Miracle League of Northampton County and its mission". Robert Lammi was the driving force in the creation of this Miracle League and the Founders Award is named in his honor.

Bob's compass extends beyond the Palmer borders. Bob served as a commissioner on the Lehigh Valley Planning Commission, he currently represents Palmer as Chairman of the Easton Area Joint Sewer Authority and is currently treasurer of the Palmer Township Stormwater Authority.

From the moment Bob moved here, he devoted his life to making Palmer Township the place others would love as much as he did.

Chuck Diefenderfer

Chuck was also a member of our Planning Commission where he most recently served as Chairman. My impression of Chuck is a kind-hearted and jovial individual who can easily wear the hat of a leader. His extensive involvement in community service and local government is commendable.

For over a decade, Chuck dedicated his time and expertise to the Suburban Rescue Squad. As financial secretary and captain, he played a pivotal role in ensuring a smooth operation.

As a member of the Planning Commission, he helped shape the future of the community. He was involved in updating the Township's Comprehensive Plan. Within this process, he helped define the community vision and goals for sustainability and quality of life.

Chuck also served as a resident representative on the committee responsible for updating the Township's Zoning Ordinance, helping to make sure that zoning regulations aligned with the community's evolving needs.

Chuck's contributions have left an indelible mark on our community.

Bob Blanchfield

Bob was Chairman of the Palmer Township Planning Commission prior to Chuck. Bob Blanchfield always greets you with a smile and a warm welcome.

Bob is a life member of the Palmer Municipal Fire Department where he achieved the esteemed rank of Captain. As a Fire Prevention Officer, he worked in our school educating young people on fire safety as well as coordinating the annual fire prevention display at the Palmer Park Mall.

Bob was also a member of the initial Palmer Community Weekend committee. He and the fire department collaborated closely with Eddie Grube to make Palmer Community Weekend a success. Blanchfield and many of his fellow Fire Department Members used their vacation time to help set up the event.

Blanchfield and Lammi teamed up to coordinate the first Firemen's Muster at Fairview Park. The competition brought together fire departments from various locations in Northampton County and Phillipsburg. The event not only showcased their abilities but also fostered a sense of unity among emergency responders.

That was just the beginning for Blanchfield. For an impressive 33 years he served on the Planning Commission with part of that time as Chairman. He also represented Palmer Township on the Easton Area Joint Sewer Authority and currently chairs the newly created Palmer Township Stormwater Authority ensuring our community's resilience against environmental challenges.

As the current Vice President of the Palmer Business, Industrial, & Professional (BIP) Association, Bob is instrumental in helping the community by raising funds for projects such as the Chrin Community Center, the Palmer Memorial Library, and the Miracle League.

Bob Walker, Bob Lammi, Chuck Diefenderfer, and Bob Blanchfield are our neighbors, our friends, our co-workers. They are also the unsung heroes of the Palmer Township community. They have spent most of their lives working to make our community a better place.



Left to Right: Chuck Diefenderfer, Bob Walker, Bob Blanchfield and Bob Lammi: We thank you. We honor you. And we are grateful for all you have done.



Todd
MILLER
Roofing, Siding and Seamless Gutters

*Trust The Name Your
Neighbors Trust Most*

ROOFING | SIDING | SEAMLESS GUTTERS

***Locally Owned Family Run Business
For Over 25 Years in the Palmer Township Area
Lifetime Local Resident***

We are dedicated to providing reliable, complete roofing, siding, and seamless gutters at the Guaranteed Best Price in the region. When you're ready to upgrade your home Todd Miller is the one to call at 610-972-8347.



2900 Charlotte Ave | Easton, PA 18045 | Phone: (610) 972-8347
Visit us at toddmillerroofing.com

TEMPORARY POOLS

All temporary pools capable of holding more than 24 inches of water DO require a permit and inspection each year the pool is erected. The permit must be obtained before installation occurs. Use of the pool shall be prohibited until an inspection is obtained and approval has been issued by the Building Department.

Please be aware that pools with heights between 24 inches and 48 inches will require a permanent barrier in accordance with the 2015 International Residential Code/2015 International Pool & Spa Code. Also, overhead power lines, grade slopes and zoning setbacks will have an impact as to the allowable location of a pool. Call the Building Code Department with any questions at 610-253-7191.



GRASS/NOXIOUS VEGETATION AND SIDEWALK CLEARANCE

Spring is finally here and it is time to put down that snow shovel and start-up the lawn mower! Palmer's ordinances limit the height of grass to a maximum of 6-inches.

Also, please maintain the sidewalk clear of impeding tree branches, bushes and decorative vegetation by cutting such back so that the full width of the sidewalk, to a height of 7-feet, is accessible for the safety of pedestrians.



FREE

CERAMIC PROTECTANT

with the purchase of the Classic Wash (\$10)

Enter Code **1122** at Payment.

Expires 5/25/24

— Roll Into Spring with a Sparkling Clean Ride —

Upgrade your car's protection
with **CERAMIC COATING**,
offering superior durability
and longer-lasting shine.

FREE USE of Industrial
Vacuums After Every
Wash Purchase!

SparkleCarWash.com

Sparkle
Car Wash

3808 Easton-Nazareth Hwy.
Easton • 484.626.1513
Behind Wawa

1070 Congdon Ave.
Stroudsburg • 570.424.9687
Behind Weis

3188 PA-940
Mount Pocono • 570.355.5015
Behind Wawa

OPEN DAILY: 7 AM TO 8 PM
Weather Permitting

EASTON AREA PUBLIC LIBRARY - PALMER BRANCH

1 Weller Place, Palmer, PA 18045 • 610-258-7492 • www.eastonpl.org

Summer Reading 2024 is almost here!

Embark on an exciting journey this summer with the Easton Area Public Library! The theme for Summer Reading 2024 is "Adventure Begins at Your Library." Come join us, and let the books on our shelves and the programs in our calendar be your passport to a summer filled with excitement, discovery, and adventure!



Readers of all ages are invited to join in the fun!

Summer Reading 2024 begins June 17 and ends August 17! Visit the library, read books, and earn prizes. Special performers for this summer include Bright Star Theatre, Pocono Wildlife Rehabilitation, and Science Heroes. Registration opens June 1. For more information, visit eastonpl.org.

Remember to join us at the Palmer Branch for our Summer Kick-Off Event with Bright Star Theatre on Monday, June 17 at 1:00pm!

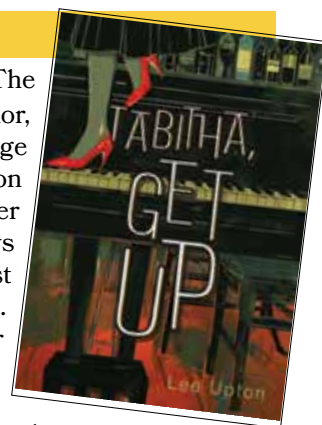
PROGRAMMING FOR ADULTS

PALS (Palmer Adult Library Support) – The Palmer Branch invites adults with developmental disabilities to be an integral part of our library community. We offer daily opportunities for learning, creativity, fun, and friendship. Activities include art/crafts, games and puzzles, and simple STEM activities. Visit the Palmer Branch anytime to participate in PALS!

Paint Night at the Library – Make your own masterpiece with guided instructions and create a painting to take home. All materials will be provided. Registration is required.

Wednesday, July 3 • 6:00pm (Registration begins June 12)

Author Visit with Lee Upton – The Palmer Branch is excited to host author, poet, and former Lafayette College professor Lee Upton for a celebration of her new book *Tabitha, Get Up*. Her book has been described in reviews as, "Upton's best, funniest, and most ingenious work of fiction yet." Ms. Upton will read an excerpt from her book, offer a Q&A with the audience, and sign copies of *Tabitha, Get Up*, which will be available for purchase at the event. No registration is required. Wednesday, June 12 • 6:00pm



Monthly Book Groups for Adults

Forever Young Adult Book Group – meets the third Wednesday of the month at 6pm

Adult Book Group – meets the fourth Tuesday of the month at 6pm

Diverse Voices – meets virtually the fourth Thursday of the month at 7pm

Also coming this summer...

• Adventures in E-Books: Learn to use Libby

• Getting Started with Ancestry.com

The Ashton Family - Worthy of Your Trust for Five Generations

• Est'd 1847 •

Ashton
FUNERAL HOME, Inc.

1337 Northampton St., Easton, Pennsylvania
610-253-4678 | www.AshtonFuneralHome.com

R. Kline Ashton, Jr., Supervisor
Debra Jo Ashton-Chase, Funeral Director / W. Scott Ashton, Funeral Director

Green Pond Nursery, Inc.

610-252-5521

5301 Green Pond Road
Easton, PA 18045

Mulch • Soil • Deco Stone

Delivery Available

TWEEN AND TEEN PROGRAMMING



Teen Writers Workshop

For ages 12-17.

Teens who enjoy creative writing can strengthen their skills, receive feedback, and share ideas in fun, judgement-free environment. Contact Katie at katiec@eastonpl.org for information. No registration required.

Also coming this summer for teens...

- Nail Art for Beginners
- Sneaker Art

CHILDRENS PROGRAMMING

Visit bit.ly/eastoncal for our full program schedule!



Storytimes

Little Storytime – ages 0-2 with a caregiver

Big Storytime – ages 3-5 with a caregiver

Sensory Friendly Storytime – ages 2-6 with a caregiver

Bedtime Storytime – ages 3-7 with a caregiver

Book Discussions for Kids



Wednesday, June 26
at 4:30pm: *Who Was Neil Armstrong?*



Wednesday, August 7
at 4:30pm:
I Survived the California Wildfires, 2018

Upcoming Library Closures

Saturday, May 27 and Monday,
May 29 (Memorial Day)

Wednesday, June 19 (Juneteenth)

Tuesday, July 4 (Independence Day)

Visit the library's online event calendar
for a full schedule of all our summer
activities!

View our full program schedule and register for programs
online! Find the calendar by visiting www.eastonpl.org or
bit.ly/EastonCal.

CHRIN COMMERCE CENTRE

Building bridges between business, industry and our community

Acreage available for industrial, office and retail development • Nearby access to Route 22, I-78 and I-80



- Amazon
- Sheetz
- Martin Guitar
- Lulus
- Mondelez
- Porsche
- UPS
- WoodSpring Suites

ROUTE 33 CHARLES CHRIN INTERCHANGE
IMAGE COURTESY OF MCTISH, KLOUDEL AND ASSOCIATES

www.ChrinCommerceCentre.com • 610.253.9665



They count on your mammogram too.

To take care of others, you need to take care of your own health. Screening mammograms can find breast cancer in its earlier, most treatable stages. Make the time for your annual mammogram today – your loved ones will thank you tomorrow.

Schedule your mammogram | LVHN.org/mammo



It is the Parks & Recreation Department's goal to provide citizens with a safe environment in which recreational opportunity can be maximized. Due to the wide variety of patron needs and use of Township property, it is necessary to establish the following rules and regulations.



EVENT REPRESENTATIVE MUST HAVE PERMIT WITH THEM FOR DURATION OF THE EVENT.

Reservations: Will be available to Palmer residents only for the month of January, beginning on January 2nd, 2024 at 9:00am. Park rentals will become available to the general public on February 1st, 2024 at 9:00am. All reservations must be completed in person at the Charles Chrin Community Center of Palmer Township, located at 4100 Green Pond Road, Palmer, PA 18045, Phone: 610-252-2098 ****Pavilion rentals are prohibited during Palmer Community Weekend.***

FEES:

- **PENN PUMP:** There are 2 permits available per day at Penn Pump Park. Penn Pump permits allow the consumption of alcohol and access to restrooms. Rental time 8:00am–10:00pm
- 1. Penn Pump Pavilion Permit *Not to exceed 150 people. Allows parking near the pavilion and pavilion access. **Residents \$100.00**

2. Penn Pump Picnic Permit *Not to exceed 50 people, required for 10 or more people.

Picnic permit for Penn Pump allows access to tables outside of the pavilion.

Residents \$50.00

- **RIVERVIEW:** Permit for Riverview Park allows the responsible use of alcohol. Rental time 8:00am–10:00pm.

Residents \$100.00 & Non-Residents \$175.00

- **BIP PAVILION, BRIARCLIFFE, FAIRVIEW, KEYSTONE, & MILL RACE** – Alcohol prohibited. Rental time 8:00am–10:00pm

Residents \$75.00 & Non-Residents \$150.00

****Briarcliffe is unavailable for rent on weekends from Memorial Day to Labor Day***

THE ROLE OF THE CODE AND ZONING DEPARTMENTS

FUNCTIONALITY AND EDUCATION

The roles of the Code and Zoning Departments are essential to enhancing the quality of life by monitoring and enforcing a variety of applicable ordinances, codes, regulations and ordinances related to building codes, health and safety, blight, property maintenance, and other matters of public concern; and serves as a resource and provides information on Township regulations to property owners, residents, businesses and the general public.

To help keep Palmer Township as a desirable community to live in, such Departments take a proactive approach in enforcing regulations and ordinances. An effective program has a direct impact on preserving property values as well as attracting tourism, new housing, and business development. As codes may vary between municipalities, education and enforcement is crucial to promote a safe and blight-free township.

The following represents a list of the most commonly-cited issues:

- **Maintenance of Structures:** Structures, including houses, buildings, garages, sheds, fences and decks, should be maintained structurally sound and kept in good repair. Pools, hot tubs and ponds must be kept in a sanitary condition.
- **Unlicensed and/or Inoperable Vehicles:** Vehicles on exterior property areas are required to be inspected, registered and operable.
- **Parking:** Motor vehicles, recreational vehicles or units, trailers or similar may not be parked on grass, dirt or any other surface except paved, concrete or approved stone areas.
- **Sidewalk Obstructions:** Public sidewalks must be kept clear of trees, bushes and snow.
- **Outdoor Storage:** Refuse, rubbish and garbage should not be stored on the exterior property and premises. Typical items

include construction materials/equipment, furniture, electronics, accumulation of yard debris (such as branches) and other items not specifically manufactured for exterior use.

- **Feeding of wild animals:** placing food on exterior property areas is prohibited as such an act can attract nuisance wildlife.
- **Garbage and Recycling Practices:** Bulk items shall not be stored outside, or placed at the curb, until the special curbside collection week. Garbage and recycling must be placed in an approved receptacle.
- **Overgrowth:** Grass and nonornamental vegetation is limited to 6-inches in height. Noxious vegetation, such as: ragweed, goldenrod, poison ivy, poison oak and poison sumac shall be removed.
- **Sight Obstructions:** Sight distance zones of intersecting street curblines must be kept clear of fences, walls, plantings and structures.
- **Signage:** Signs affixed to utility poles, street signs and/or located within the right-of-way are prohibited. Yard sale signs should be free-standing and removed within 24-hours after the sale. All commercial signage requires a permit.
- **Recreational Vehicles and trailers:** Watercrafts, motor homes, travel trailers, all-terrain vehicles and snowmobiles are not permitted to be stored in the front yard.
- **Permits:** Various building and zoning permits are required. Visit the Township website (www.Palmertwp.com) for additional information.

Remember, responsible property ownership and maintenance will give rise to a healthy neighborhood economy. If you would like more information, you may contact the Code Department at (610) 253-7191.

EDUCATION:

Suburban EMS is dedicated to providing educational opportunities to our employees that enrich and enhance their abilities and knowledge in emergency medical care & transportation. These classes focus specifically on our staff and surrounding emergency responders. Our in-house instructors can now teach EMR and EMT certification classes in addition to EVOC/EVDT and AHA CPR. Students perform clinicals on our ambulances every week with defined assignments related to the week's classroom material.

Becoming an EMT has never been easier, and the best part is that you can earn while you learn. Suburban EMS is offering a PA Bureau of EMS-approved EMT-Basic Certification Course. Train for a rewarding Prehospital Emergency Medical Services career and get paid while you earn your certification.

We offer Competitive Salaries, Vacation, Sick Time, Medical, Dental, Vision Insurance, 401k Retirement plans, and other benefits. For more information about our program please email rbruce@suburbanems.org.

Class dates for 2024:

- Summer June 24th to August 15th
- Fall September 30th to November 21st

EMPLOYMENT:

Here at Suburban EMS, we always look for quality Paramedics, EMTs, Dispatchers, and Volunteers to enhance our workforce. If you want to become part of a winning team and work in a rewarding field, contact us to learn more.

Suburban EMS follows a strict policy that we do not discriminate in providing services and care to the patients we serve, or in the terms and conditions of employment or membership for our staff. We will not discriminate on the basis of race, color, national origin, ancestry, religion, sex, age, disability, political belief, military service, sexual orientation, gender identity, or any other protected class. It is at all times, the intent of Suburban EMS to comply with State Human Relations Act provisions and all federal discrimination and employment laws.



Attention History Buffs: The Palmer Historical Society invites your membership and attendance at their informative and educational meetings featuring local and area subjects of interest. Meetings are held in the Palmer Library 10:00AM to Noon February – May and September – November. Membership is \$5.00 per year and includes invitation to all events.

Interested? Please contact Ed Dean at 610-253-2281



**WONDERING WHAT YOU
SHOULD DO TO PREPARE
YOUR HOME TO SELL?**

Contact me today!



The Frederick Group



Real Estate Services

Stop by our office today
there is always a
professional available to
assist you with your real
estate needs!

2505 Newburg Rd
Easton, PA 18045
610-393-6861
610-398-0411

Did you Know?

In May of 2022 the Palmer Township Fire Prevention Ordinance § 81-2 was amended to adopt the 2018 edition of the International Fire Code. This amendment brings Palmer Township up to date with the most recent code editions for the Fire Prevention Ordinance, which are also consistent with the Commonwealth's most recent code editions under the Pennsylvania Uniform Construction Code. With the most current edition of the Fire Prevention Code, there are changes to the "Open Burning", "Fire Pits", "Recreational Burning" provisions of the Ordinance.

Open Burning remains prohibited. Burning of construction debris, leaves or grass clippings, or rubbish and other refuse remains prohibited. But what is Open Burning? Fire Code defines open burning as "burning of materials wherein products of combustion are emitted directly into the ambient air without passing through a stack or chimney from an enclosed chamber." What does this mean? Open

burning is any burning that takes place in an unenclosed space or unapproved container. Example of an unapproved container would be a steel drum. Open Burning regulations does not include "Recreational Fires" or "Portable Outdoor Fireplaces".

What is a Recreational Fire? The Fire Code defines recreational fire as "an outdoor fire burning materials other than rubbish where the fuel being burned is not contained in an incinerator, outdoor fireplace, portable outdoor fireplaces, barbeque grill or pit and has a total fuel area of 3 feet or less in diameter and 2 feet or less in height for pleasure, religious, ceremonial, cooking, warmth or similar purposes." This kind of burning includes ordinary campfires and other small fires used for the aforementioned activities. Recreational Fire devices can be constructed of landscape blocks with a metal ring insert commonly referred to as Fire Pit Kits which are commonly available at local hardware stores. NOTE: A METAL INSERT MUST BE PROVIDED. The location of the fire pit shall not be located within 25 feet of a structure or combustible material such as trees, decks, canopies, and fences. And any combustible materials located on the ground shall be removed within 25 feet of the device.

What is a Portable Outdoor Fireplace? The Fire Code defines portable outdoor fireplace as "a portable, outdoor, solid-fuel-burning fireplace that may be constructed of steel, concrete, clay or other noncombustible material. A portable outdoor fireplace may be open in design, or may be equipped with a small hearth opening and a short chimney or chimney opening in the top." These devices function similar to a masonry or factory-built indoor fireplace except they are portable, solid-fuel burning fireplaces designed to provide ambience and warmth in an outdoor setting. They come in many styles and designs, both open and enclosed. These devices were previously prohibited and enforced as "open burning". The Fire Code now provides clear regulations of these devices. Portable Outdoor Fireplaces, also known as Patio Fireplaces, shall be used in accordance with the manufacturer's instructions.

Regardless of what device is used, the fire shall be attended at all times until extinguished and a means to extinguish the fire shall be readily available. And, burning shall be prohibited when atmospheric conditions or local circumstances make such fire hazardous. Example would be Red Flag warnings or weather alerts of increased fire risk. We will do our best to advise our residents of any red flag or increased fire risk alerts, but common sense should prevail. Be responsible when enjoying your outdoor fire device. Do not burn wet wood or unseasoned wood (freshly cut, not dried) which creates excessive smoke emissions; do not burn during windy conditions; do not burn when relative humidity is 45% or lower; do not burn when the outdoor temperature is 90 degrees or above.

If you have any questions, you may contact the Fire Commissioner at 610-559-9809.



Create Beautiful
& Distinctive Landscapes
in Your Back Yard!

AtlanticRIDGE
LANDSCAPE DESIGN-BUILD

PA Home Improvement Contractor #000767

ICPI
1529
Lehigh Valley
A Division of Lumber

1511 Sullivan Trail • Easton, PA 18040
610-252-8833
Come Visit Us at www.Atlanticridge.com

Stokes
Electrical Supply Company

Lighting Showroom

Open Mon. - Fri. 9am-5pm
Sat. 9am-3pm

610-258-7206

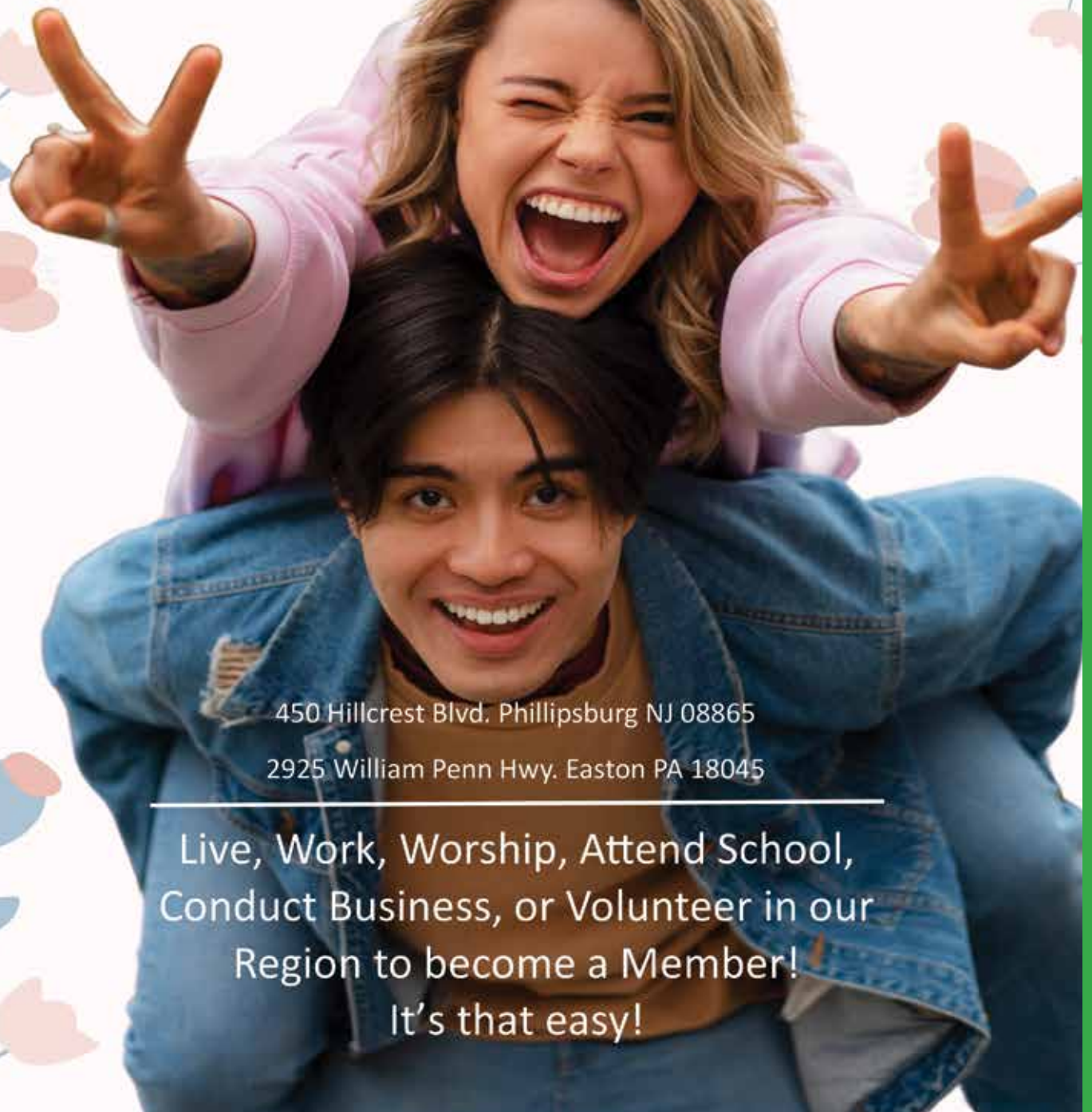
QUOIZEL

3401 Northwood Avenue, Easton, PA 18045



COMMUNITY FEDERAL CREDIT UNION

No Bankers, Just Neighbors.



450 Hillcrest Blvd. Phillipsburg NJ 08865

2925 William Penn Hwy. Easton PA 18045

Live, Work, Worship, Attend School,
Conduct Business, or Volunteer in our
Region to become a Member!
It's that easy!

Recapping 2023

How much did Palmer recycle in 2023?

Palmer residents recycled a total of 4,619 tons curbside, and dropped off a total of 736 tons of recyclables at the recycling center!

Commercial entities in Palmer recycled a total of 6,808 tons curbside, and dropped off a total of 227 tons of recyclables at the recycling center!

This equates to a grand total of 12,390 tons of recyclables collected in Palmer in 2023!

How much money has Palmer received for its recycling efforts?

To date, Palmer Township has received a total of \$3,814,737 in grant money from the Pennsylvania Department of Environmental Protection. This money is used to purchase equipment like trash and recycling totes, leaf collection machinery, and it is also used to fund the continued development of the new recycling center! A huge thank you to all the residents and businesses who continue to support and take part in Palmer's recycling program!

Is your trash/recycling toter damaged?

Call the Municipal Building at (610) 253-7191 to report the damage and we will have a Public Works crew come out to your property to fix/replace the toter.



Palmer Township Trash and Recycling Guide



Pictured above: Annual grinding of yard waste at the Berks Street Yard Waste Facility

A well deserved Thank You to the Earth Stewards of Palmer Township

The Earth Stewards of Palmer Township, an all volunteer organization, are the folks you might see cleaning up litter and debris alongside many roadways and trails throughout Palmer Township. In 2023, they collected a total of 5,151 pounds of litter, 874 pounds of recyclables, 115 pounds of metal, and 59 tires for a grand total of 6,141 pounds, or 3 tons of material. Thank you to all of the Earth Stewards for all that you do for the entire Palmer Township community!

2024 Important Dates

Bulk Item Collection - Weeks of May 13th, September 9th, and November 18th.

Metal and Appliance Collection - Weeks of April 15th and September 23rd.

Yard Waste Collection - Weeks of June 3rd and November 4th.

Leaf Collection - Eight weeks in the fall.

Christmas Tree Collection - First three full weeks of January.

2024 Holiday Collection Delays - Memorial Day, 4th of July, Labor Day, Thanksgiving, Christmas and New Years Day.

Recycling Drop-Off Locations

Open to Palmer Township Residents & Businesses only

Hartley Avenue Recycling Center
3600 Hartley Avenue, Palmer, PA 18045

Hours of Operation:

Year round

Monday, Wednesday, Friday - 8am-4pm
Saturday - 10am-3pm
Sunday - 12pm-4pm

Accepts paper, cardboard, plastic bottle & containers, glass, cans, scrap metals, and yard waste (no more than 3 small bundles, no larger than 3'x3' and not exceeding 40 lbs.) per visit.

Berks Street Yard Waste Facility
Berks Street, Palmer, PA 18045

Hours of Operation:

Dec., Jan., & Feb. - 1st Sunday of the month - 12pm-4pm
March - Every Sunday - 12pm-4pm
April-November - Saturday - 10am-4pm, Sunday - 12pm-4pm, Wednesday - 9am-3pm

Accepts large amounts of yard waste for a small fee. NO plastic rope, bags or twine. NO grass clippings, tree stumps, soil, dirt, sod, wood, animal excrement, or noxious weeds including bamboo. Tree limbs must be less than 12" in diameter.

www.palmerwp.com

Questions or concerns? Reach out to the Municipal Building at (610) 253-7191 to have your question addressed

The Pennsylvania Department of Environmental Protection (PADEP) and federal government requires Palmer Township to manage stormwater through its Municipal Separate Storm Sewer System (MS4) program and implement a pollutant reduction plan. The Palmer Township Stormwater Authority (PTSA) oversees the MS4 program. If the PTSA fails to address stormwater concerns, including improving local water quality, the PA DEP and the United States Environmental Protection Agency (EPA) may impose fines. In addition to state and federal requirements, PTSA must also manage the costs of maintaining its stormwater infrastructure, address flooding concerns, and educate the public.

PTSA, through the guidance of a steering committee, evaluated methods of funding its stormwater program. The committee determined that the costs of the stormwater program are most equitably met through a stormwater fee which is assessed based on the amount of impervious area on each property. The issue of using taxes is that a property's assessed value does not correlate with the amount of stormwater it contributes to the system. Additionally, tax-exempt properties, such as churches and schools, benefit from the stormwater program but would not contribute financially. Therefore, properties with larger impervious areas, such as warehouses and industrial sites, will have a higher fee because they contribute more to the system.

The PTSA and steering committee used aerial imagery to determine the amount of impervious area (IA) – areas where water can't soak into the ground, like roofs and driveways- on each property within the township. Using the IA data, the PTSA was able to determine how to distribute costs equitably, and what the fee should be for each property. If your property has less than 300 square feet of IA, there's no fee. Otherwise, the fee will be determined by your property's rounded impervious area measured in square feet. The stormwater fee is included in the existing sewer and trash bill and will be billed quarterly. The bill includes the property's billing tier. Please see the table above for a breakdown of tiers.

There are stormwater needs throughout the township such as aging and deteriorating infrastructure and flooding concerns that must be addressed in the upcoming years regardless of the work required by the MS4 permit. For instance, when pipes fail, the road above the pipe can deteriorate, leading to sinkholes and necessitating further repairs. Recent storms have caused similar damage across the township including sinkholes, pipe failures, road repair, and much more. For example, the storm damage incurred between July 15 and 16 could exceed five million dollars, in addition to a backlog of projects that still need to be completed.

Additionally, stormwater management extends beyond permit requirements and infrastructure maintenance- it's a matter of public health and safety. Proper management of stormwater helps prevent flooding, reduces the risk of property damage, and mitigates potential threats to public safety. Palmer Township has experienced first-hand the need for improved stormwater infrastructure maintenance and management due to recent storm damage. Projects to fulfill these improvements and meet State and Federal requirements demand significant funding. The stormwater fee will generate the necessary funds for addressing aging infrastructure, fulfilling permit requirements, conducting maintenance and repairs, and protecting public health and safety.

Current projects the PTSA are currently working on include Kingwood Street repairs scheduled for construction this spring which will install a storm sewer system with multiple inlets and curbing for the street for approximately \$750,000. The Meadow Avenue flood mitigation study has produced three phases of improvements for the drainage system encompassing Meadow Avenue, Clayton Street, Seip Avenue, and Old Nazareth Road. The three phases of this project are estimated to total \$7 million. PTSA and their engineers are also working on a drainage study of Bayard Street, working with PennDOT to repair the S. 25th Street culvert, and working with DEP to construct final repairs to Wedgewood Drive and design storm sewer systems for streets north of Wedgewood. PTSA also approved the Pollutant Reduction Plan recommended projects that are required to be completed by 2028 for the Township's MS4 permit. There are five projects recommended for both the Lehigh River watershed, and the Schoenck Creek watershed to reduce the required amount of almost 195,000 pounds of sediment.

Property owners who want to have their impervious area verified may go through the appeal process. There is the allowance for credits which are a percent reduction of the stormwater fee depending on offsetting stormwater program costs. For more information, please review PTSA's Stormwater Management Program Credits and Appeals Manual. This manual can be found on the township's stormwater website at <https://palmertwp.com/stormwater.html> under the forms and documents tab.

For more information, make sure to review the stormwater website at <https://palmertwp.com/stormwater.html>. Furthermore, property owners who have questions about their bill, how it was calculated, and efforts to appeal may reach out to PTSA: email: stormwater@palmertwp.com, phone number: 610-871-7871

Tier Number	Impervious Area Amount	Monthly User Fee
Tier 0	< 300 sf.	No fee assessed
Tier 1	300 to 1,999 sf.	\$9.64
Tier 2	2,000 to 3,999 sf.	\$20.00
Tier 3	4,000 to 5,999 sf.	\$32.68
Tier 4	6,000+ sf.	Monthly Fee of \$6.94/1,000 sf. of IA (Rounded to the nearest 100 sf.)





My heart IS IN THE RIGHT HANDS

"I never thought that I would have a heart attack at my age, but I'm glad that when I was at my worst I turned to the best. Now I feel better than ever, and none of this would have been possible without the extraordinary care from everyone at St. Luke's." — Kim Krug

When it comes to your heart, you need a team you can trust to provide the highest quality care, no matter how complex or routine the issue. That's why Kim chose St. Luke's – the region's only nationally ranked 50 Top Heart Hospital to help her get back to feeling better than ever. With St. Luke's, Kim knows her heart is in the right hands. *To learn more, visit sluhn.org/kim or scan the QR code.*



1-866-STLUKES | sluhn.org/heart

Marcus Averbach, MD, Andrea Emery, Luis Tejada, MD, Kylie Tartaglia



MS4 BMPS- STREET SWEEPING

Street sweeping is an important Best Management Practice (BMP) in Palmer Township because of how many benefits there are to using a street sweeper. Not only does street sweeping aesthetically make the neighborhood look better, but it also helps significantly reduce pollution from entering the storm sewer system. You will learn about how a sweeping machine works and why they are important to the MS4 program, not only in Palmer Township, but across the country.

There are two different types of street sweepers, one uses mechanical brooms and sprays water onto the road to dislodge any dirt or debris off the streets. Then the rotating brooms sweep it together to be removed on a conveyor belt so any material can be properly disposed of. The other type of street sweeper relies on air jets to remove stuck on dirt or grime from the street, then the truck picks it up with a vacuum system on the underside of the vehicle. Studies have shown that more advanced sweeping technology like the air jet sweepers works more efficiently than typical mechanical broom sweepers to clean roadways. This may be because air jet street sweepers do not require water, which may cause some particles or contaminants to be stuck on the road.



The impacts of street sweeping reach far beyond the street that is cleaned. When townships like Palmer use street sweepers to clean debris off the roads it reduces hazardous materials from reaching the storm drain or being left on the street to eventually wash into the storm sewer. This is one of the reasons why the EPA has determined street sweeping to be a Best Management Practice for MS4 programs across the country. Street sweeping also reduces contaminants like motor oil from poisoning aquatic life. Not to mention, a clean street gives the right impression to visitors, and to longtime residents as well! For more information on Palmer Township's MS4 program and how you can reduce stormwater pollution at home, please visit www.palmerwp.com/stormwater.html.



Pictures above and to the left closely resemble the models of street sweepers Palmer Township currently uses.

BIP

BUSINESS, INDUSTRIAL AND PROFESSIONAL ASSOCIATION NEWS

The BIP held its annual "State of the Township" luncheon on January 24, 2024, at the Marblehead Chowder House. Palmer Township Board of Supervisors Chairman, Michael Brett, and Township Manager, Bob Williams, spoke about the changing demographics and current developments under review in the township. They spoke about the townships MS4 Program and that the township partnered with Herbert, Rowland, and Grubic, Inc. (HRG), an engineering firm that specializes in stormwater management. In 2023, Township committees were established with resident and business owners to begin reviewing stormwater management improvement projects. It was followed with public meetings for the residents to attend to learn about the program. In September 2023, the Board of Supervisors passed an ordinance creating the Palmer Township Municipal Stormwater Authority. The Authority is tasked with managing the townships MS4 Program.

The Today's Palmer newsletter will continue to educate our residents about the MS4 Program. Check your Table of Contents in the newsletter quarterly for updated information.

Welcome to our new BIP Members:

The BIP would like to welcome our newest members:
James Regan, JPAR Action Realty and Jeff Baker,
The Flying Locksmiths.

Mark your Calendars...

The 2024 BIP Golf Outing is confirmed for
Monday, September 9, 2024, at the Southmoore Golf Course,
235 Moorestown Drive, Bath, PA.



STATE REPRESENTATIVE JOE EMRICK

DO YOU QUALIFY? PROPERTY TAX/RENT REBATE PROGRAM

Older adults and Pennsylvanians with disabilities may be eligible to receive up to \$1,000 in rebates. Applications for the state's 2023 Property Tax/Rent Rebate program are due June 30. Remember, assistance through my office is always free and there is no need to pay a private firm.

The rebate program benefits eligible Pennsylvanians age 65 and older; widows and widowers age 50 and older; and people with disabilities age 18 and older. The income limits increased this year to \$45,000 annually for both homeowners and renters, and half of Social Security income is excluded.

Under Pennsylvania law, the Department of Revenue evaluates the program before the June 30 deadline. If extra funds are available, the deadline is extended to Dec. 31. Applications postmarked by that date will be accepted for processing.

There are a few ways to apply – online, by mail or in person. If you are interested in applying for the program and need assistance, please call my Palmer office at 484-544-0146 or my Nazareth office at 610-746-5090. You may also visit my district office at 134 South Main St., Nazareth, or my Palmer district office at 301 Village at Stones Crossing Road if you prefer in-person assistance.

Please do not hesitate to reach out to my district offices if I can be of assistance in any way. I look forward to serving you.



DO YOU KNOW OUR STATE TREE?

Tsuga canadensis, known as the eastern hemlock, became Pennsylvania's state tree in 1931!

These coniferous trees, which are native to eastern North America, are long lived, shade, moist soil and slope tolerant. They can be found mostly along waterways in mountain valleys.

They typically grow 30-50in in a year and reach an overall height of 102ft, although some have been measured at 174ft!

The eastern hemlock played a tremendous role in America's development. Hewn beams of its wood made cabin walls and railroad ties; hemlock bark provided raw material for tanneries; pioneers made tea from needles, brooms from branches, and flour from the inner bark. The hemlock also provides critical shelter and food for forest wildlife and secures a cold-water habitat for native brook trout.



After widespread deforestation around the turn of the 20th Century, the scarcity of trees became apparent. The official naming of the state tree was, at least in part, an effort to bring attention to the need to conserve this species.

Today, we find these beautiful evergreens threatened by hemlock woolly adelgid's, tiny insects that originated in Asia. They were first identified in Virginia over 50 years ago and are now recognized in 64 of the 67 PA counties. Hemlock woolly adelgid feed by sucking fluids from the needles, and infested trees often die. To combat this invasive insect, DCNR developed a Hemlock Conservation Plan that provides a strategy to conserve this species. Additional information about hemlock woolly adelgid, DCNR's conservation plan, and tips for homeowners are available on DCNR's website at: <https://www.dcnr.pa.gov/Conservation/ForestsAndTrees/InsectsAndDiseases/HemlockWoollyAdelgid/Pages/default.aspx>

The oldest recorded Eastern Hemlock, located in Tionesta PA, is estimated to be at least 554 years old!

MAKE A DIFFERENCE IN YOUR COMMUNITY!

Are you passionate about preserving our green spaces, advocating for sustainable forestry practices, and enhancing the beauty of Palmer Township?

The STC is seeking a dedicated individual to fill an open seat.

Your expertise and dedication will contribute to a healthier environment and a more vibrant community for generations to come. Whether you're an arborist, environmental enthusiast, or simply a nature lover, this is your opportunity to have a direct impact. Apply now and be part of shaping a greener future for our township!

Contact bdegerolamo@palmertwp.com for more information.



BAMBOO ROOT DISPOSAL WEEK

Per the Township Bamboo Ordinance (Chapter 187), it has been determined that planting, cultivating, and growing bamboo has a negative impact on the health, safety, and welfare of the public at large and must be controlled. For specific instructions on how to control bamboo, refer to Ordinance Chapter 187 or call the Municipal Building.

The most effective method for bamboo removal is to cut off the canes, dig out the entire root, and dry it for disposal.

Residents can bring bamboo roots and canes to the Township Recycling Center on Hartley Ave on:

- Monday June 10th
- Wednesday June 12th
- Friday June 14th
- Saturday June 15th
- Sunday June 16th

Residents do not need to dry roots ahead of time for this drop off, but canes and roots do need to be separated.



Native plants are most commonly defined as those that have been established in an area well before the age of the early American settlers. They are adjusted to the seasonal and yearly fluctuations in weather conditions such as temperature, rainfall, and humidity, and other environmental conditions such as soil type, topography of the land, and amount of sunlight.

The best reason to grow native plants is that they play an important role in sustaining the local endemic animal and plant communities. They provide food for the local animals such as birds, deer, squirrels, butterflies, honeybees, and other insects. By planting native plants, you are supporting the entire web of local life. Most non-native plants take up space and resources but provide nothing useful in return. You have seen their plant tags: no pest or disease problems.



Native insects might just seem like pests to us but they are important to keep in the garden. Fewer insects mean fewer birds because many baby birds eat only insects such as caterpillars. Our native plants provide a more abundant supply of these than non-native plants.

Have you noticed how few butterflies you see compared to years ago? Each species of caterpillar feeds exclusively on a small group of native plants. The relationship is simple: no native plants, no caterpillars; no caterpillars, no butterflies. This is the problem now with monarch butterflies since the milkweed plants their caterpillars need for food are disappearing from the environment along the monarch migration path.

There exist numerous attractive native plants that may survive in all types of growing conditions no matter where the property is in Pennsylvania. Key to selecting any plant is the phrase “right plant, right place.” The specific needs of the plant for sunlight, moisture, and soil type are typically printed on the plant tag. The closer you

match the needs of the plant to the site where it will live, the better the plant will thrive and the less work you will have.

How do you know if a plant actually is native? If you see a plant growing almost everywhere around you, does that mean it’s native? Unfortunately, no. Many non-native plants grow in our neighborhoods, and some of them are invasive, meaning they will propagate quickly at the expense of the native vegetation. Commonly seen does not mean native.

If you can’t rely on how common the plant is or on its common name, then how do you know if the plant is native? The easiest option is to buy from a place that sells only native plants. Staff at these places can also advise you on the best plants to select for your site. Of course, there’s always Google search!

What can I do?

1. Add a few native plants to your yard; even one or two can help. Look for plants that support pollinators and caterpillars. No space or don’t want to dig? Try flowerpots and containers.
2. If you are buying plants from a garden center or big box store that sells a mix of native and non-native plants, research the ancestry of the plants.
3. If hiring a landscaper to work on your property, request that native plants be installed.

Places to Purchase Native Plants

1. Edge of the Woods – Orefield, PA. <https://edgeofthewoodsnursery.com>.
2. Bowman’s Hill Wildflower Preserve – New Hope, PA. Check their website for specific information on native plant sale days. <https://bhwp.org/grow/native-plant-nursery/>

Further reading in the Green Guide selection: *Insects, Invasive Plants, Bees, Eco-friendly Yard*

Further reading in the Palmer Public Library: *Bringing Nature Home: How You Can Sustain Wildlife with Native Plants* by Doug Tallamy.



Proudly Serving Palmer Township Since 2023

OUR SERVICES INCLUDE:

- Municipal Engineering
- Water Facilities Engineering
- Wastewater Engineering
- Structural Engineering
- Traffic & Transportation Engineering
- Surveying
- Environmental Engineering
- Planning & Site Design
- Geographic Information System
- Construction Administration & Observation

Corporate Office: 949 Easton Road Warrington, PA 18976 215.343.5700	630 Freedom Business Center Third Floor King of Prussia, PA 19406 610.572.7093	433 Lancaster Avenue Suite 200 Malvern, PA 19355 610.489.5100
101 Larry Holmes Drive Suite 201 Easton, PA 18042 610.989.4940	105 Raider Boulevard Suite 206 Hillsborough, NJ 08844 908.874.7500	










WOLFS RUN

The only new townhomes with an included finished basement in an ultra-convenient Palmer Township location.





- ★ Included luxury features
- ★ Close to Routes 33, 22, and 78
- ★ 1 mile from daily conveniences

Schedule your appointment and learn why Wolfs Run is the perfect place to call home.



Charles Chrin Community Center News



4100 Green Pond Road Palmer, PA 18045 • 610-252-2098 • www.palmercommunitycenter.org

COMMUNITY CENTER CLOSINGS: Memorial Day – Monday May 27, 2024 • 4th of July – Thursday, July 4th, 2024

UPCOMING EVENTS & PROGRAMS:

- **Seniors Pinochle with a Twist:** Seniors Cards: Pinochle
Players Needed: Tuesday Afternoons – 12:30 – 4:00pm. Join them as they play 3, 4, 5 or even 6 handed pinochle! Don't worry if it's been awhile, or if you only ever played one way. They will teach you. Come share the fun and laughter. It's a great way to spend an afternoon. Any questions, call Marj at 610-252-7964 or email to paulm1@rcn.com
- **Ambassador Club:** Meets every 3rd Monday of the month at 1:00pm (No Meetings in July, August, or December)
- **Greater Lehigh Valley Chapter of the American Sewing Guild:** 2nd Thursday of Each Month (No Meeting July and August) 10:00am-1:00pm
- **Penn Rose Quilt Club:** Meets 1st Wednesday of Each Month, 10:00am
- **URW:** Meets third Tuesday of each month, 9:00am, no May, September or December meetings
- **Dream...Believe...Dance Recital:** Sunday May 19th
- **Blood Drive:** Friday, June 14th - 12:00pm – 7:00pm
- **Great Dane Dog Show:** Friday, August 2nd – Saturday August 3rd



OPEN GYM BASED ON AVAILABILITY, PLEASE CALL.

\$5.00 WALK-IN FEE

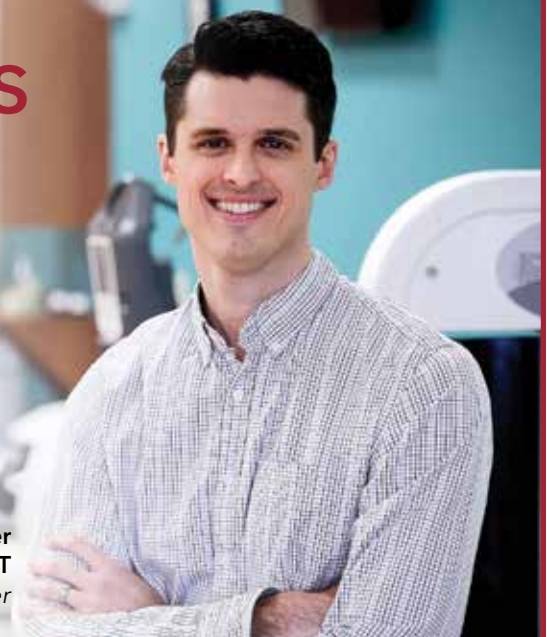
Choose The Experts Who Specialize In *You*

GOOD SHEPHERD
PHYSICAL THERAPY



833 S. 25th Street • Easton
GoodShepherdRehab.org

Jacob Weaver
PT, DPT
Site Manager



AQUATIC THERAPY | OCCUPATIONAL THERAPY | PHYSICAL THERAPY

Charles Chrin Community Center News

Fitness Class Schedule

Sunday	Monday	Tuesday	Wednesday	Thursday	Friday	Saturday
	The Works 9:15-10:00am August	Yoga 9:30-10:20am Becky		Yoga 9:30-10:20am Becky		
	Zumba 10:30-11:20am August	Zumba Toning 10:30-11:20am August	Zumba 10:30-11:20am August	Bootcamp 10:30-11:20am August	Zumba 10:30-11:20am August	
<i>Silver Fitness Classes!</i> ➡ <i>See full schedule for more details.</i>	Zumba Gold 1:00-1:45pm August <i>Silver Class</i>	Silver Core Stretch 1:00-1:45pm August <i>Silver Class</i>	Zumba Gold Toning 1:00-1:45pm August <i>Silver Class</i>	Silver Bootcamp 1:00-1:45pm August <i>Silver Class</i>	Silver Yoga 1:00-1:45pm Becky <i>Silver Class</i>	
	Zumba 7:00-7:50pm Lisa		Zumba 6:00-6:50pm Lisa			
						

FIT PASS: \$40.00/month

FP includes unlimited classes & use of the fitness center

FIT CARD: 10 Classes/\$50.00

Fit Card does not expire

SILVER PASS: \$20/month

SP includes unlimited silver classes & use of the fitness center.

WALK-INS: \$5.00/class

SILVER WALK-INS: \$3.00/class

•NO REGISTRATION FEES

•NO YEARLY CONTRACT

•MONTH-TO-MONTH PAYMENT

We also accept Silver Sneakers, Silver & Fit, Active & Fit, Renew & Fit, Healthways, Health Plan Partners with qualifying insurance. Contact your insurance provider to see if you are eligible.



*Watch for upcoming special events throughout the year!

"Like" us on Facebook to stay connected with our up to date information

including cancellations and class changes!

4100 Green Pond Rd. Palmer, PA. 18045 - www.palmercommunitycenter.org - 610-252-2098

Thank you

Palmer Township gratefully acknowledges the generosity and support of the businesses and individuals who have placed advertisements in our newsletter. This newsletter has been designed and printed at no cost to you, our residents. We encourage you to patronize these businesses as they play a vital role in the economic stability of our community.



Silver Fitness Schedule

Charles Chrin Community Center of Palmer Township, 4100 Green Pond Rd., Palmer, PA 18045



Monday	1:00pm-1:45pm	Zumba Gold August
Tuesday	1:00pm-1:45pm	Silver Core Stretch August
Wednesday	1:00pm-1:45pm	Zumba Gold Toning August
Thursday	1:00pm-1:45pm	Silver Bootcamp August
Friday	1:00pm-1:45pm	Silver Yoga Becky

Our Silver Pass is \$20/month

(includes access to the Fitness Center and all Silver Fitness Classes *only*)

Drop-in Fee is \$3/class

*Check eligibility through your insurance for Silver & Fit, Active & Fit, Renew Active, Silver Sneakers, or Healthways.

We also offer FREE quarterly social events!

You can find more information at
www.palmercommunitycenter.org or
call 610-252-2098

Zumba Gold – Latin-inspired, dance fitness program designed for the active older adult, beginner participant, pregnant women, those who need modifications, arthritis sufferers, and those recovering from injury. This is a fun, feel-good, party-like class.

Silver Bootcamp – This is a great way to increase strength, flexibility, balance & coordination. Pilates is regarded as an ideal exercise regimen for people in or over their 50's due to low-impact exercise. Benefits are improved posture, stamina, and strength.

Zumba Gold Toning – "Muscle Toning for the Young at Heart", combines the cardio element of Zumba Gold with strength training techniques.

Silver Core Stretch – A full body stretch using movements that flow smoothly to increase flexibility, decrease muscle tension, develop core strength, and improve muscular balance.

Silver Yoga – This class will begin with a short breath practice and then work up to a mindful flow ending in a relaxing shivasana. Participants will explore getting into and out of different yoga postures and how to make adjustments when necessary. This class will use props, explore variations, and work on balance while increasing both strength and flexibility. No prior yoga experience necessary - all levels welcome! Come explore the beautiful blend of breath and movement to open up the body and enhance mobility.

Birthday Parties

Join us for your child's birthday party. We provide two trained party coordinators who are ready to get kids moving and excited. We take care of set up and clean up to ensure a stress-free event. We provide pizza, juice, all paper products. ***Birthday Cake is not provided.** Children will have the opportunity to play on different gymnastics equipment; including bars, beam, trampoline and the air trak, along with games and the parachute! Or you may have a child that is into sports, we can also incorporate the sports theme into your child's special day! After one hour of play time the party coordinators will escort the children to the food area, they will serve the children pizza and juice. Don't worry about clean up the coordinators take care of that also. In addition to bagging all the birthday gifts to take home! **Please contact Brenda at 610-252-2098 for more information.**

PARTY HOURS

All dates & times
vary based upon
availability.

PRICING

Basic-up to 20 Children..... \$275.00/Resident
\$325.00/Non-Resident
Each additional child \$5.00
Additional Pizza \$15.00 each
Weekday birthday party \$250.00 (Monday-Friday—
Daytime parties based upon availability)





SUMMER CLASSES

DREAM BELIEVE DANCE



About

Welcome to Dream..Believe..Dance of
Palmer Township!

Embark on a journey where every step is a beat, and every beat sparks a dream. With over 30 years of teaching excellence, we're not just a dance studio; we're a family that grows with every pirouette and plié.

From the joyful leaps of our littlest dancers to the graceful turns of our competitive performers, we offer a kaleidoscope of classes for all who seek to express, explore, and excel.

Join us, where the rhythm of passion meets the stage of possibility. Dream big, believe in yourself, and let your dance soar at Dream..Believe..Dance of Palmer Township!



Tuition Rates

Cost per 6 week session

30 min - \$84.00

45min - \$96.00

60 min - \$108.00

75 min - \$120.00

90 min - \$150.00

Unlimited - \$200.00

Private Class Rates

Miss Justine

30 min - 30 per class

45-min - 40 per class

Miss Abby and Miss Abby

30 Min - 25 per class

45 min - 35 per class

Half of the cost of the private class gets paid directly to the community center.

Summer Session

Registration opens May 1st

6 week session

6/17/24 through 8/2/24

Miss Abby's Wednesday classes will start 6/24 and go through 8/7

No classes 7/1/24 through 7/5/24

Tuesday

Princess Pre-Ballet

5-5:30

ages 2 1/2 - 4 yrs old

Ballet, Tap and Tumble level 2

5:40 - 6:40

Ages 4-7 (previous dance experience required for 4yr olds)

Beginner/Intermediate

6:45 - 7:30

Lyrical/Contemporary

Ages 7- 12



Wednesday

5:00-5:30 Beginner Hip Hop/Street Jazz

ages 5-10 yrs old

Miss Abby

5:40 - 6:40

Beginner Acro/Tumbling

ages 4-12

Little to no Acro/Tumbling Experience

Miss Abby

Wednesday

Private Lesson

5-5:45

Intermediate Jazz/Tap

ages 8-12

5:50 -6:35

Miss Justine

Inter/AdvAcro/Tumbling

ages 8-12

6:45-7:45

Miss Justine

Thursday

Junior Comp Choreo

5-6

Ballet Level

6-7

ages 9 and up

Teen Comp Choreo

7-8:30

For questions, please email Miss Justine missjustine@dreambelieve-dance.com

Register at <https://dancestudio-pro.com/online/dbd>

Charles Chrin Community Center News



2024 PALMER POOL

**The pool opens Memorial Day Weekend,
May 25th, 26th, & 27th, 2024!**

- **New Season Passes** must be purchased at the Charles Chrin Community Center of Palmer Township, 4100 Green Pond Road, Palmer, PA 18045.
- **Season Pass Renewals** may be processed through your annual invoice email or in person at the community center. (Replacement key tags are \$5.00, if needed)
- **Day Passes** can be purchased at the pool. Proof of residency must be provided.

For questions, please email pool@palmertwp.com
Pool Location: 3001 Farmersville Road Palmer, PA 18045
Pool Hours: 12:00pm – 7:00pm (Weather permitting)
Pool phone (only accessible during summer): 610-258-4576

MEMBERSHIP RATES

Family Membership

- * Includes 2 adults & 4 children
- * \$20 for each additional child

Palmer Resident: \$275.00

Individual Membership

- * Must be 16 or older

Palmer Resident: \$150.00

Senior (62+): Free for Palmer Residents
– Must sign up at the Charles Chrin Community Center

Children 2 & under are FREE

Adults are 18 and older

20% Military Discount
(Retired/Active) – Must Show ID

DAILY ADMISSION PRICES

Adult

Palmer Residents Only: \$15.00

Child (3-17 years old): \$10.00

Children ages 3-12 must be accompanied by a Parent or Guardian -Palmer **Residents Only**

****Proof of residency must be provided for Day Passes****



- Cabinets
- Granite
- Marble & Quartz
- Kitchen & Bath Accessories

www.royalgraniteofnj.com
908-454-6700
Granite Counter tops
for Kitchen,
Bathrooms & Outdoors



We offer high quality products and outstanding service

754 Memorial Parkway, Phillipsburg, NJ



Ryan Stocker
Licensed Insurance Agent

Choosing Insurance is Hard. I Can Help!

Call Ryan for a **FREE Quote Today!**

(610) 216-0787

health
markets®



Email: RStocker@healthmarkets.com Personal website: www.healthmarkets.com/rstocker

HealthMarkets Insurance Agency - Health | Medicare | Life | Supplemental

Celebrating 22 Years!

**ADVANTAGE
FENCE**

\$250 Off
with \$5,000
or more new
installation

SPECIALIZING IN ALUMINUM & VINYL • RETAIL - INSTALLATION

www.advantagefence.net • 610-252-1984

2045 Bushkill Drive, Easton, PA 18040

BRUCE'S
COMMERCIAL REFRIGERATION INC.

Residential Services

AIR CONDITIONING • HEATING • PLUMBING

610-905-9668

REGISTERED MASTER PLUMBER PA. LIC. '15

**GOT A HOME
CLEANUP PROJECT?**



Visit www.thebagster.com

Get \$10 Off One Collection:

Promo Code: 265-PTPS

For bigger cleanups, call (800) 869-5566.



*Dignified, personalized service in an
intimate, elegant setting.*



John M. Finegan, Jr. - Supervisor
John M. Finegan, Sr. - Funeral Director

610.258.7021

4080 William Penn Highway
Easton, Pennsylvania 18045



EASTON, PENNSYLVANIA

www.FineganFuneralHomePA.com





INTERESTED IN LEARNING TO PLAY MAH JONGG?

Beginner Classes Starting Saturdays
June 1st – August 3rd, 11:00am – 12:30pm
At the Charles Chrin Community Center of
Palmer Township
\$75.00 Residents
\$90.00 Non-Residents
Call 610-252-2098 to Register for the
12-week session

Our instructor is Darrel Ann Murphy, a professional mah jongg instructor. She has taught for over 20 years in Florida, New Jersey and now Pennsylvania. She currently teaches at the Palmer Branch Public Library and the Forks Township Community Center. Darrell Ann was recently featured on a CNN broadcast segment and locally on the WFMZ TV station highlighting mah jongg playing. Darrell Ann teaches with patience and humor always creating a comfortable environment for players.

Come join us to learn this fascinating and intricate game which originated in China and now plays all over America.

Men and Women are both Welcome!!



Learn to Play... or Improve your Current Game

Summer Pickleball Lessons are Available at Mill Race Park

BEGINNER CLASSES - WEDNESDAY EVENINGS

(includes: First Hour Instruction & Second Hour Instructional Game Play)

Summer Session 1:

June 5th – June 26th (5:30-7:30pm)

Summer Session 2:

July 10th – July 31st (6:00-8:00pm)

Summer Session 3:

August 7th – August 28th (6:00-8:00pm)

Summer Session 4:

September 4th – September 25th (5:30-7:30pm)



INTERMEDIATE CLASSES - MONDAY MORNINGS

Summer Session 1:

June 3rd – June 24th (8:00-10:00am)

Summer Session 2:

July 8th – July 29th (8:00-10:00am)

Summer Session 3:

August 5th – August 26th (8:00-10:00am)

Summer Session 4:

September 9th – September 30th (8:30-10:30am)

Minimum of 4 people to run session but will take up to 8 people.....

Register early by calling the Charles Chrin Community Center at 610-252-2098.

Payment is due the first day of the session by cash or check.

\$80 (per 4 week session)



Amazing Athletes is the premier multi-sport program for children ages 2-6 years old! We teach the basic fundamentals of 10 different sports in a fun, non-competitive environment where every kid can learn at their own pace! Text 908-291-2307 or email gcarmona@amazingathletes.com to set up a free trial class at any time! Classes running year round, see website for exact days and time slots for your age group!

To register, go to the following website:
www.amazingathletes.com/lehigvalley

Click on classes and then scroll down to find your Charles Chrin day and time!

At Amazing Athletes, we empower children by using sports as a catalyst to engage their inner strengths and abilities so they can confidently pursue an active lifestyle through each stage of development.





FUN PLACE TO PLAY AND BE SOCIAL!

Tumble Time!
w/ Amazing Athletes

- Tumble Time is held weekly at Charles Chrin Community Center every Monday and Thursday. Time slots are 9:30am to 10:15am and 10:30am to 11:15am. NO SHOES on the mats.
- Cost is \$10.00 cash, paid at the front desk each week, or you can pay \$90.00 for a 10 visit punch card! Unstructured class where kids can roam free and explore, play and meet friends!
- Soft play, trampoline, balance beams, toys, balls, music and bubbles every class!
- Sports equipment for parents and children to play with at their own leisure (soccer balls/nets, footballs and basketballs)
- Children up to age 5 are permitted, although most equipment is best suited for 3.5 and under. Older children we recommend join our Amazing Athletes or Soccer Stars program!

COMMUNITY YARD SALE/VENDOR FAIR

DATE: SATURDAY, OCTOBER 12TH, 2024 TIME: 9:00AM - 2:00PM

AT THE CHARLES CHRIN COMMUNITY
CENTER OF PALMER TOWNSHIP



CALLING ALL TO COME, SELL & SHOP

COMMUNITY YARD SALE

THE SELLERS WILL BE SET UP IN THE PARKING LOT OF THE CCCC AT THE FRONT OF THE BUILDING (turf field side) EACH SELLER WILL HAVE TWO PARKING SPACES. THE TOTAL COST OF THESE SPACES IS \$10.00. IF YOU ARE INTERESTED IN SELLING, PLEASE EMAIL US AT PALMERCOMMUNITYCENTER@RCN.COM BY JULY 1ST.

CRAFT/VENDOR FAIR

CRAFTERS/VENDORS WILL BE INSIDE THE BUILDING. BRING YOUR OWN TABLE. COST FOR A 3X6 FT SPACE WITH 2 CHAIRS IS \$40.00, A 10x10 SPACE WITH 2 CHAIRS IS \$50.00. A LIMITED NUMBER OF TABLES ARE AVAILABLE TO RENT FOR \$5.00 (FIRST COME FIRST SERVE) IF YOU ARE A CRAFTER/VENDOR INTERESTED IN PARTICIPATING, PLEASE EMAIL US AT PALMERCOMMUNITYCENTER@RCN.COM BY JULY 1ST.

CHARLES CHRIN COMMUNITY CENTER
OF PALMER TOWNSHIP
4100 GREEN POND ROAD
EASTON, PA 18045

PHONE: 610-252-2098

PALMERCOMMUNITYCENTER@RCN.COM

3RD ANNUAL PALMER TOWNSHIP TRICK OR TREAT TRAIL



**THE CHARLES CHRIN COMMUNITY CENTER WILL HOST AN EVENING OF THRILLS
AND ADVENTURE FOR THE CHILDREN OF PALMER TOWNSHIP AGES 8 AND UNDER.**

\$POOKTACULAR INVITE TO BUSINESSES, ORGANIZATIONS AND COMMUNITY MEMBERS

IF YOU OR YOUR BUSINESS/ORGANIZATION ARE INTERESTED IN HOSTING A
BOOTH AND PROVIDING SOME TREATS FOR THE CHILDREN OF PALMER
TOWNSHIP, PLEASE CONTACT US BEFORE OCTOBER 11TH AT
PALMERCOMMUNITYCENTER@RCN.COM OR 610-252-2098

DATE: SATURDAY, OCTOBER 26, 2024

TIME: 4:30PM-6:30PM

THE CHARLES CHRIN COMMUNITY CENTER
OF PALMER TOWNSHIP
4100 GREEN POND ROAD EASTON, PA 18045
610-252-2098



JAY MILLER

GENERAL CONTRACTORS, INC.



SINCE 1979

WE BUILD
THINGS THE
OLD FASHIONED
WAY...

BY HAND.

610-253-4244

JAYMILLERGC.COM



Therapists you **TRUST**

**PHYSICAL
THERAPY**
AT St Luke's

3213 Nazareth Road

PALMER

484-822-5300

stlukespt.com

ONLY \$13
(REG. PRICE \$124)

HEATER TUNE UP SPECIAL

Edwin Stipe, Inc. • 877-337-8473
Exclusions Apply: cannot be used for service fees or labor charges, and not combined with other offers. Offer Expires 6-30-24

\$130 OFF

**WATER HEATER INSTALLATION
OR WATER SOFTENER INSTALLATION**

Edwin Stipe, Inc. • 877-337-8473
Exclusions Apply: cannot be used for service fees or labor charges, and not combined with other offers. Offer Expires 6-30-24

\$1300 OFF

HEATING & COOLING INSTALLATION

High Efficiency 95% or Above Heating & Cooling Installation
Edwin Stipe, Inc. • 877-337-8473
Exclusions Apply: cannot be used for service fees or labor charges, and not combined with other offers. Offer Expires 6-30-24

130th Anniversary!



EDWIN STIPE, INC.

Plumbing Heating Air Conditioning

The Experience You Need

The Integrity You Deserve

610-258-0201

www.EdwinStipe.com

Free Estimates On New HVAC Systems



**12 MONTHS
NO INTEREST
FINANCING
AVAILABLE**
Call for details. With
approved credit.

Master Plumber
PA #031 / NJ #06054

Home Improvement
PA #013611 / NJ #VH0060090

ABINGTON MANOR

AT MORGAN HILL

Senior Living & Memory Care Village

- Newly Renovated Facilities
- Locally Owned
- 24/7 Direct Care Assistance
- Clean, Bright, Spacious Rooms
- Conveniently Located off I-78



Schedule a tour and come see for yourself!

Call (610) 438-9400 or (484) 866-0607

www.abingtonmanor.com

**We've
Changed.
Our Name
Hasn't.**



Piscitello's
HOME CENTER

WE OFFER:

- Hardware and household items
- Kitchen and Bath design
- Doors and Windows
- Lumber

610-258-0441

info@piscitellos.com

2300 Wood Avenue
Easton, PA 18042

**We have
everything
contractors
AND
homeowners
may need!**



@piscitelloshomecenter



Palmer Township
3 Weller Place
Palmer, PA 18045



ECRWSS EDDM

Postal Customer

Presort Standard
U.S. Postage
PAID
Permit No. 550
Lehigh Valley, PA



This Community Newsletter is produced
for Palmer Township by Hometown Press
(215) 257-1500 • All rights reserved®



To Place An Ad Call Denise Morano At Hometown Press • 215-813-8361 • denisefhtp@yahoo.com



*Let's Get
You Home!*

TERI DANAHEY
Sales Associate

 **BERKSHIRE
HATHAWAY**
HOMESERVICES

 **FOX & ROACH,
REALTORS®**



Licensed in PA
and NJ

3465 Nazareth Road, Easton, PA 18040 • Office: 610-258-0808 • Text/Direct: 908-447-9416



Your vision. Your event. Your way. Our place



RIVERVIEW
Country Club

1 Riverview Place
Easton, Pennsylvania
610.559.9700

riverviewcountryclub.com





**REAGLE
INSURANCE**

REASONABLE RATES AND GREAT SERVICE

*Thank you to our valued clients.
We appreciate your business.*

**AUTO • BUSINESS
PERSONAL • LIFE INSURANCE**



**610-258-7216 • REAGLEINS.COM
2912 WILLIAM PENN HIGHWAY • EASTON**